

# RNAV (GPS) RWY 32L

WAAS Chan <b>50085</b> <b>W32A</b>	APCH CRS <b>322°</b>	Rwy Idg <b>13,501</b> TDZE <b>227</b> Arpt Elev <b>228</b>
--	-------------------------	--

[USN]

LEMOORE NAS (REEVES FIELD) (KNLC)

RNP APCH - GPS

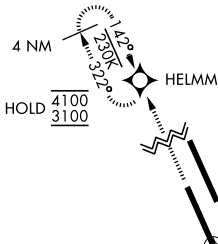
ALSIF-2



MISSED APPROACH: Climb to 3100 direct HELMM and hold.

▼ \* When ALS inop, increase vis to ¾ mile.  
 \*\* When ALS inop, increase vis to 1 mile.  
 \*\*\* When ALS inop, increase CAT AB vis to 1 mile, CAT CD vis to 1½ miles.

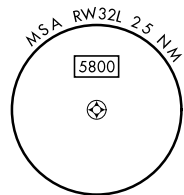
ATIS★ <b>121.575 327.15</b>	APP CON <b>124.1 269.025 (N)</b> <b>118.15 269.025 (S)</b>	TOWER★ <b>128.3 340.2</b>	GND CON <b>121.65 305.2</b>	ASR/ PAR
--------------------------------	--	------------------------------	--------------------------------	-------------



CAUTION: Glidepath-to-wheel height for height group 4 is 20'.

For uncompensated Baro-VNAV systems, LNAV/VNAV procedure NA below -15° C (5° F) and above 54° C (129° F).

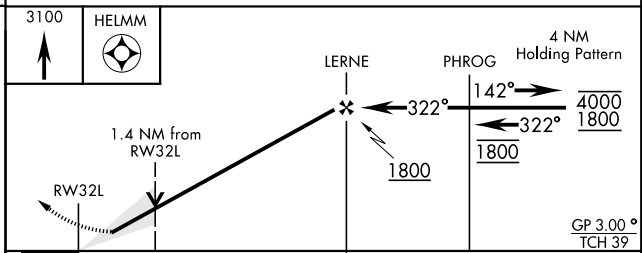
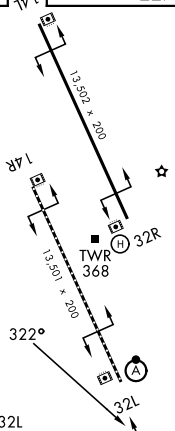
Simultaneous approaches authorized.  
 LNAV procedure NA during Simultaneous operations.  
 Use of FD or AP providing RNAV track guidance required during simultaneous operations.



Holding at IAF PHROG not authorized with aircraft holding at SILUE.

EMERG SAFE ALT 100 NM 16,700

ELEV 228	TDZE 227
----------	----------



CATEGORY	A	B	C	D
LPV DA *	427-½ 200 (200-½)			
LNAV/VNAV DA **	595-⅝	368 (400-⅝)	482-½ 255 (300-½)	
LNAV MDA ***	700-½	473 (500-½)	700-1	473 (500-1)
CIRCLING	700-1	472 (500-1)	700-1½ 472 (500-1½)	780-2 552 (600-2)

# RNAV (GPS) RWY 32L

SW-2, 16 APR 2026 to 14 MAY 2026

SW-2, 16 APR 2026 to 14 MAY 2026