

LEMOORE, CALIFORNIA

# RNAV (GPS) RWY 32R

WAAS Chan <b>60335</b> <b>W32B</b>	APCH CRS <b>322°</b>	Rwy Idg <b>13,502</b> TDZE <b>221</b> Arprt Elev <b>228</b>
------------------------------------------	-------------------------	-------------------------------------------------------------------

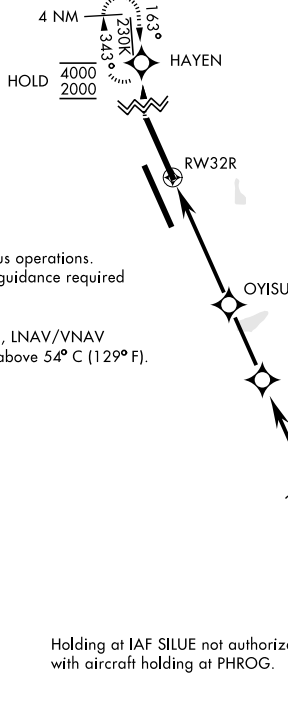
[USN]

LEMOORE NAS (REEVES FIELD) (KNLC)

RNP APCH - GPS
▼

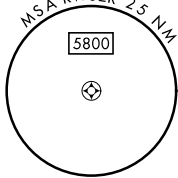
MISSED APPROACH: Climb to 1200, then climbing right turn to 2000 direct HAYEN and hold.

ATIS★ <b>121.575 327.15</b>	APP CON <b>124.1 269.025 (N)</b> <b>118.15 269.025 (S)</b>	TOWER★ <b>128.3 360.2</b>	GND CON <b>121.65 305.2</b>	ASR/ PAR
--------------------------------	------------------------------------------------------------------	------------------------------	--------------------------------	-------------



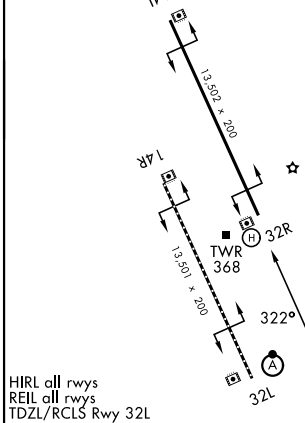
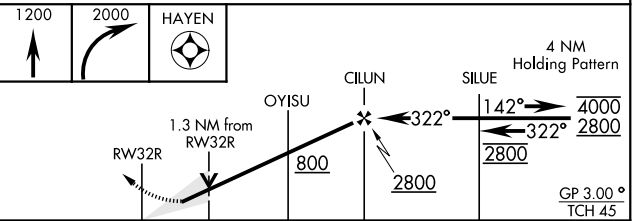
Simultaneous approaches authorized.  
LNAV procedure NA during simultaneous operations.  
Use of FD or AP providing RNAV track guidance required during simultaneous operations.

For uncompensated Baro-VNAV systems, LNAV/VNAV procedure NA below -15°C (5° F) and above 54° C (129° F).



EMER SAFE ALT 100 NM 16,700

ELEV 228	TDZE 221
----------	----------



CATEGORY	A	B	C	D
LPV DA	421-¾		200	(200-¾)
LNAV/VNAV DA	587-1		366	(400-1)
LNAV MDA	680-1	459 (500-1)	680-1⅜	459 (500-1⅜)
CIRCLING	680-1	452 (500-1)	680-1½	780-2 552 (600-2)

LEMOORE, CALIFORNIA  
Amdt 7 12JUN25

36° 20'N-119° 57'W

LEMOORE NAS (REEVES FIELD) (KNLC)

# RNAV (GPS) RWY 32R

SW-2, 16 APR 2026 to 14 MAY 2026

SW-2, 16 APR 2026 to 14 MAY 2026