

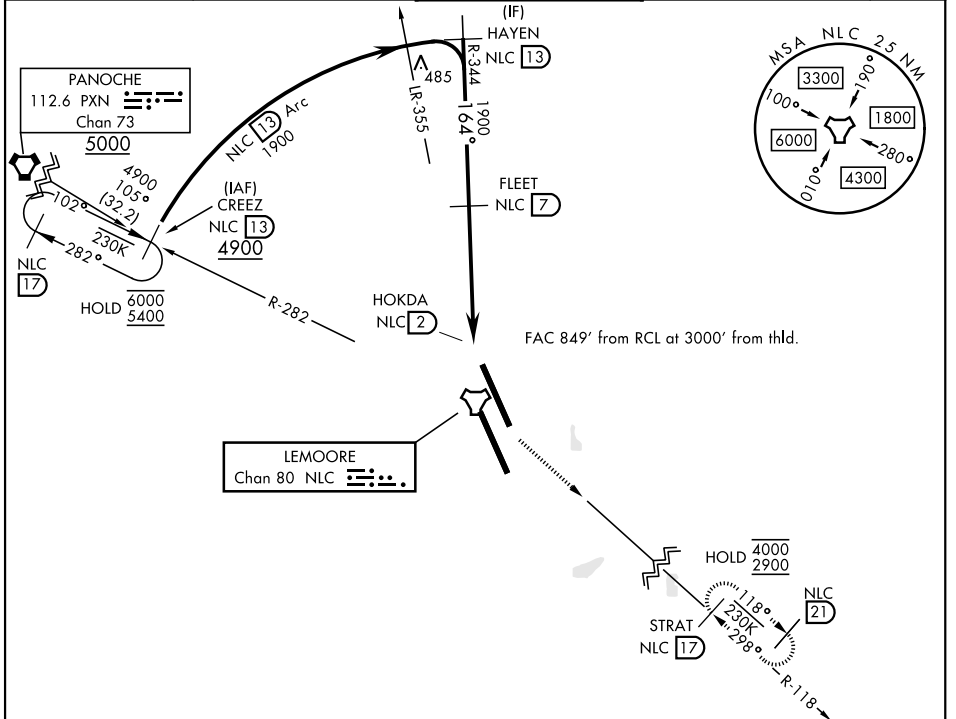
# TACAN Y RWY 14L

LEMOORE NAS (REEVES FIELD) (KNLC)

TACAN Chan <b>80</b>	NLC	APCH CRS <b>164°</b>	Rwy Idg <b>13,502</b> TDZE <b>219</b> Arprt Elev <b>228</b>
-------------------------	-----	-------------------------	---

[USN]

<p><b>MISSED APPROACH:</b> Climb to 700 then climbing left turn to 2900 direct STRAT and hold.</p>				
<p>ATIS★ <b>121.575 327.15</b></p>	<p>APP CON <b>124.1 269.025 (N)</b> <b>118.15 269.025 (S)</b></p>	<p>TOWER★ <b>128.3 340.2</b></p>	<p>GND CON <b>121.65 305.2</b></p>	<p>ASR/ PAR</p>



SW-2, 16 APR 2026 to 14 MAY 2026

SW-2, 16 APR 2026 to 14 MAY 2026

EMERG SAFE ALT 100 NM 16,700

ELEV	228	TDZE	219
------	-----	------	-----

700	2900	STRAT NLC 17
-----	------	-----------------

CATEGORY	A	B	C	D
S-14L	660-1	441 (500-1)	660-1 $\frac{3}{8}$	441 (500-1 $\frac{3}{8}$ )
CIRCLING	680-1	452 (500-1)	680-1 $\frac{1}{2}$	452 (500-1 $\frac{1}{2}$ )

HIRL all rwys  
REIL all rwys  
TDZL/RCLS Rwy 32L

# TACAN Y RWY 14L