

TACAN Y RWY 32L

TACAN NLC Chan 80	APCH CRS 322°	Rwy ldg TDZE Arprt Elev 13,501 227 228
-----------------------------	-------------------------	--

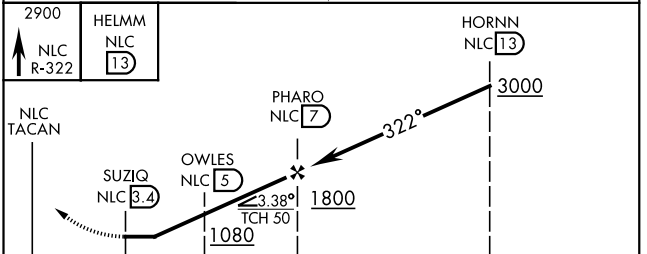
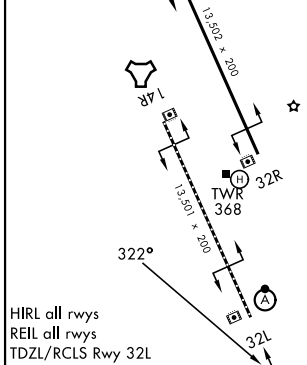
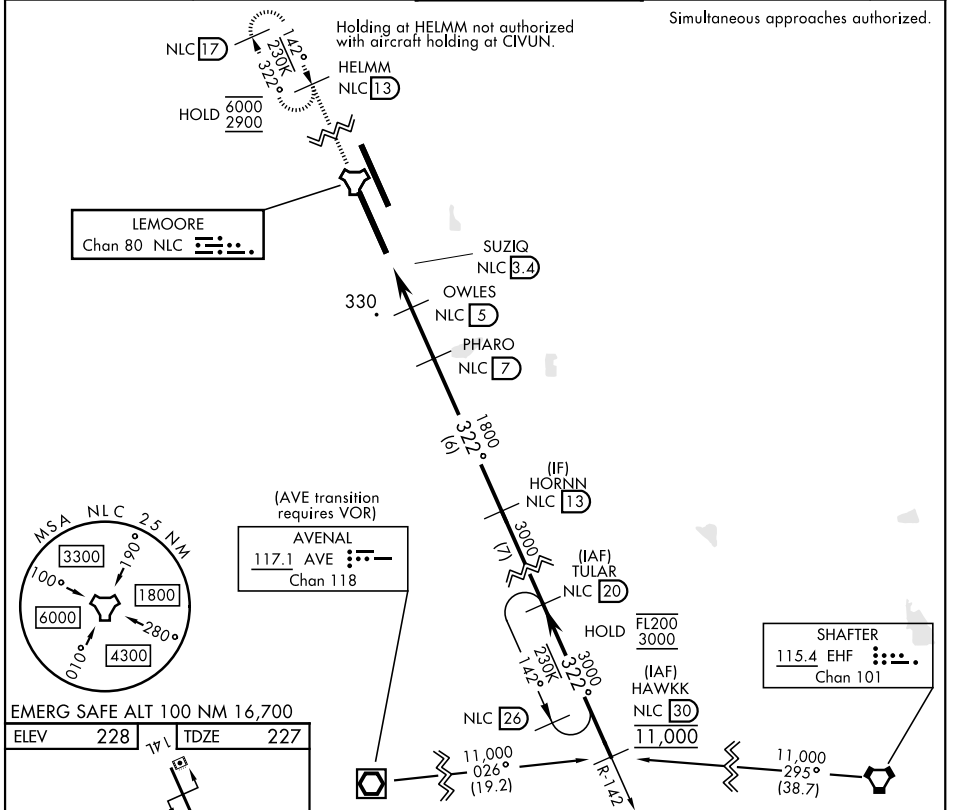
[USN]

LEMOORE NAS (REEVES FIELD) (KNLC)

<p>▼ *When ALS inop, increase vis to 1 mile.</p>	ALS F-2 A	MISSED APPROACH: Climb to 2900 via NLC R-322 to HELMM and hold.
--	--------------	---

ATIS★ 121.575 327.15	APP CON 124.1 269.025 (N) 118.15 269.025 (S)	TOWER★ 128.3 340.2	GND CON 121.65 305.2	ASR/ PAR
--------------------------------	--	------------------------------	--------------------------------	-------------

Simultaneous approaches authorized.



CATEGORY	A	B	C	D
S-32L*	580-1/2 353 (400-1/2)		580-5/8 353 (400-5/8)	
CIRCLING	680-1 452 (500-1)		680-1 1/2 780-2 452 (500-1 1/2)	780-2 552 (600-2)

TACAN Y RWY 32L

SW-2, 16 APR 2026 to 14 MAY 2026

SW-2, 16 APR 2026 to 14 MAY 2026