

# RNAV (GPS) RWY 10

APCH CRS	Rwy Idg	4121
095°	TDZE	242
	Arpt Elev	243

[USA]

SIMMONS AAF (FORT BRAGG) (KFBG)

RNP APCH - GPS
RADAR required
▼ When local altimeter setting not received, use Pope AAF altimeter setting.

MISSED APPROACH: (Do not exceed 90 KIAS) Climb to 2100 direct DORBY and hold.

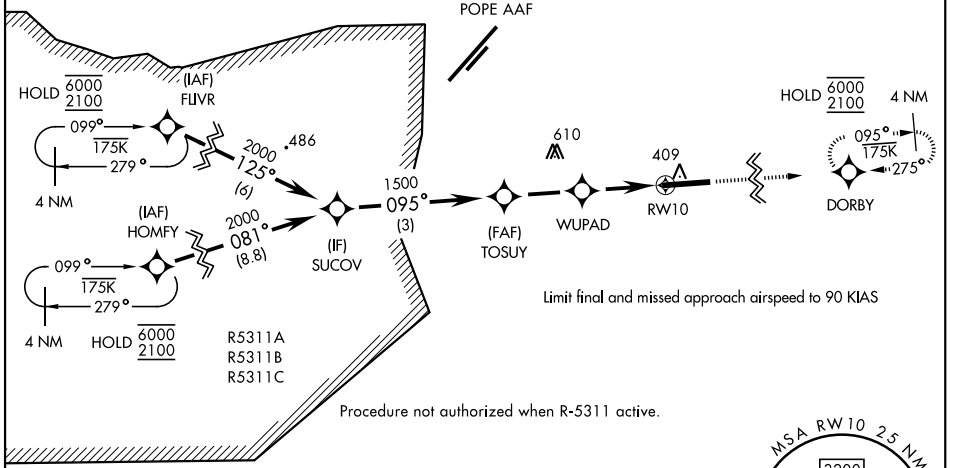
ATIS	FAYETTEVILLE APP CON
139.25	133.0 290.25

TOWER ★
125.9 240.625

GND CON
121.9 229.4

GND CON
121.9 229.4

Procedure not authorized at night.  
 Rwy 10 helicopter visibility reduction below 1 mile not authorized.  
 For helicopter use only - 400 ft/NM MA CG required.

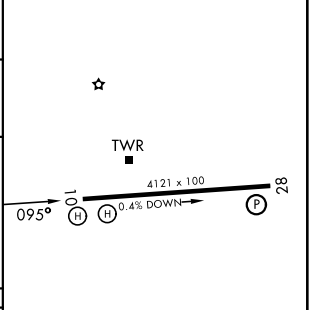


SE-2, 16 APR 2026 to 14 MAY 2026

SE-2, 16 APR 2026 to 14 MAY 2026



ELEV	243	TDZE	242
------	-----	------	-----



CATEGORY	A	B	C	D
LNAV MDA	660-1	418	(500-1)	NA

MIRL Rwy 10-28  
 REL Rwy 28

# RNAV (GPS) RWY 10