

FORT BRAGG, NORTH CAROLINA

RNAV (GPS) RWY 28

WAAS CH 67320 W28A	APCH CRS 275°	Rwy Idg TDZE Arprt Elev	4121 242 243
--	-------------------------	-------------------------------	---

[USA]

SIMMONS AAF (FORT BRAGG) (KFBG)

RNP APCH - GPS	MISSED APPROACH: Climb to 700 then climbing left turn to 2100 direct AXILE and hold.
<p>▼ * Circling not authorized at night. When local altimeter setting not received, use Pope AAF altimeter setting.</p>	

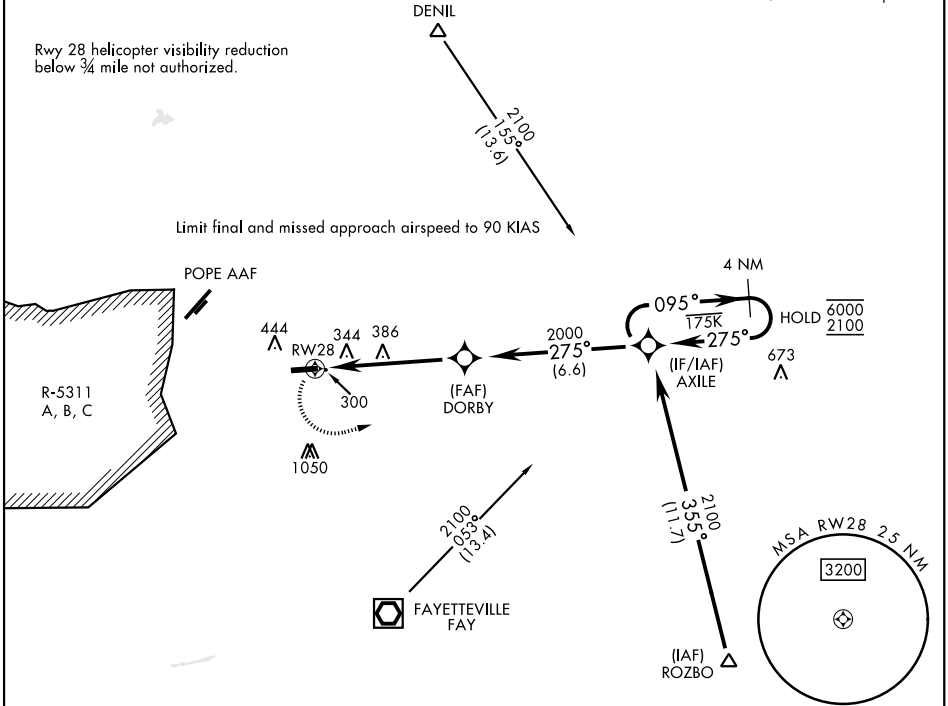
ATIS 139.25	FAYETTEVILLE APP CON 133.0 290.25	TOWER ★ 125.9 240.625	GND CON 121.9 229.4
-----------------------	---	---------------------------------	-------------------------------

For uncompensated Baro-VNAV systems, LNAV/VNAV not authorized below -15°C or above 54°C.

For helicopter use only - 400 ft/HM MA CG required.

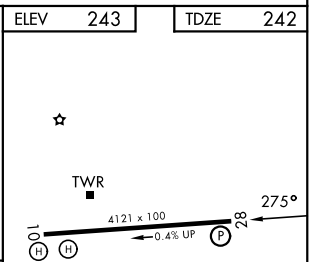
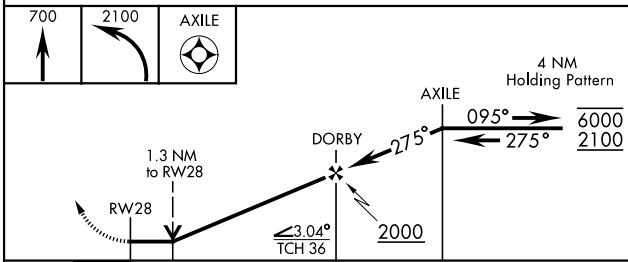
Rwy 28 helicopter visibility reduction below 3/4 mile not authorized.

Limit final and missed approach airspeed to 90 KIAS



SE-2, 16 APR 2026 to 14 MAY 2026

SE-2, 16 APR 2026 to 14 MAY 2026



CATEGORY	A	B	C	D
LPV DA	492-3/4	250 (300-3/4)	NOT AUTHORIZED	
LNAV/VNAV DA	680-1 1/4	438 (500-1 1/4)	NOT AUTHORIZED	
LNAV MDA	680-1	438 (500-1)	NOT AUTHORIZED	
CIRCLING*	760-1	517 (600-1)	NOT AUTHORIZED	

ELEV	243	TDZE	242
MIRL Rwy 10-28 REIL Rwy 28			

FORT BRAGG, NORTH CAROLINA

35°08'N-78°56'W

SIMMONS AAF (FORT BRAGG) (KFBG)

Amtd 3 04SEP25

RNAV (GPS) RWY 28