

WAAS CH 90426 W15A	APP CRS 154°	Rwy Ldg TDZE Apt Elev	5002 357 357
--	------------------------	-----------------------------	---

RNAV (GPS) RWY 15

HARRISON COUNTY (ASL)

RNP APCH.

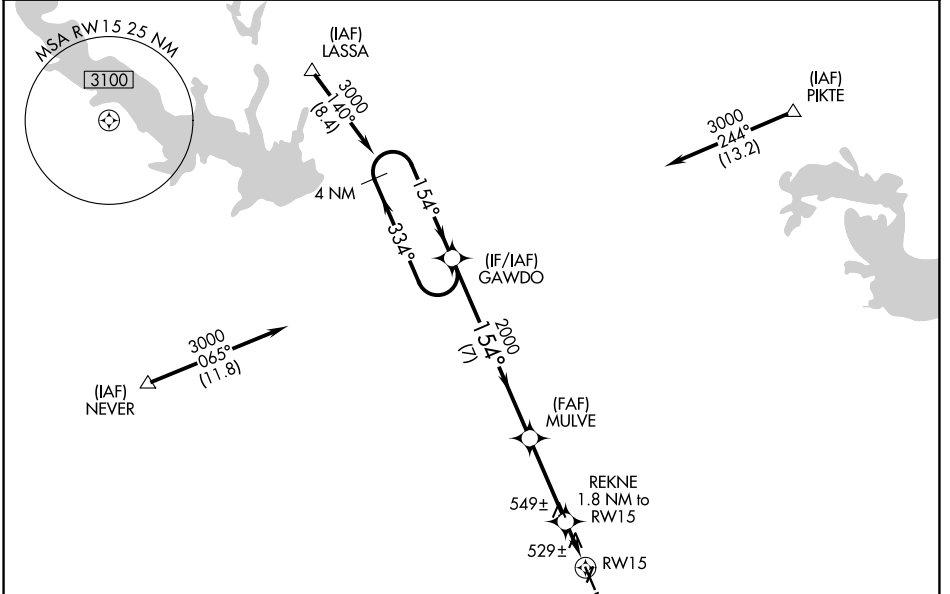
NA Rwy 15 helicopter visibility reduction below 1 SM NA.
When local altimeter setting not received, use Longview altimeter setting and increase all MDA 60 feet; increase LP Cat C visibility 1/8 mile.
Procedure NA at night.

MISSED APPROACH: Climb to 3000 direct FAXDO and hold.

AWOS-3PT
118.675

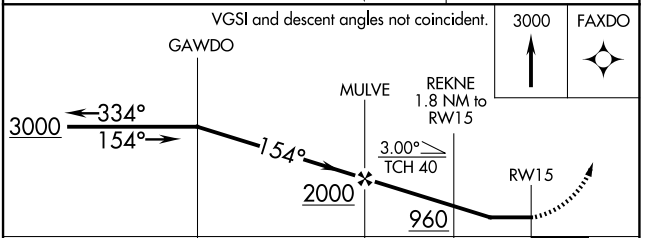
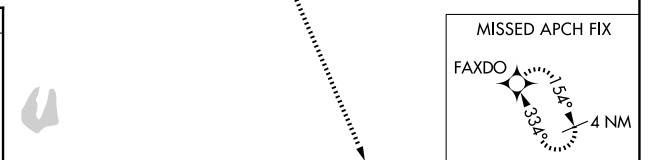
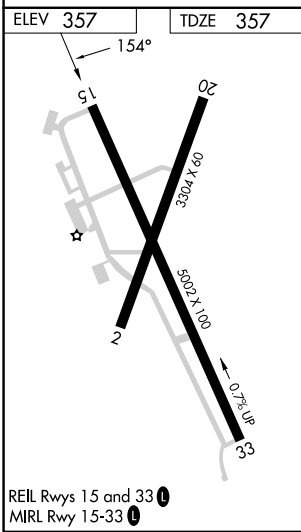
SHREVEPORT APP CON
119.9 335.55

UNICOM
122.8 (CTAF) 0



SC-2, 16 APR 2026 to 14 MAY 2026

SC-2, 16 APR 2026 to 14 MAY 2026



CATEGORY	A	B	C	D
LP MDA	780-1	423 (500-1)	780-1 1/4 423 (500-1 1/4)	NA
LNAV MDA	800-1	443 (500-1)	800-1 3/8 443 (500-1 3/8)	NA