

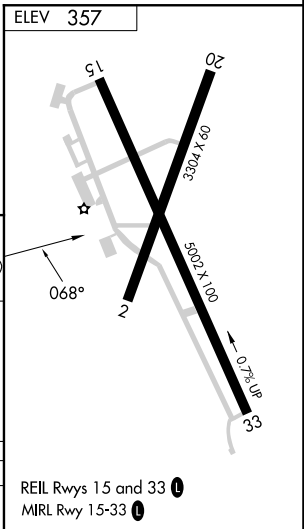
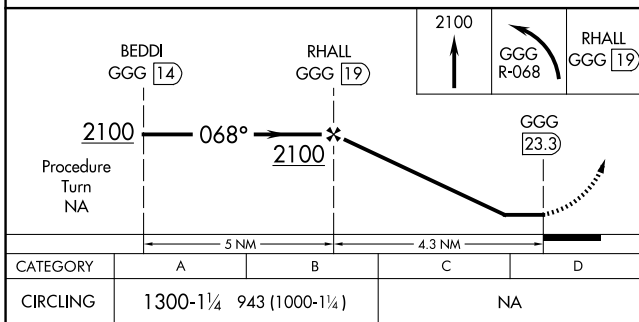
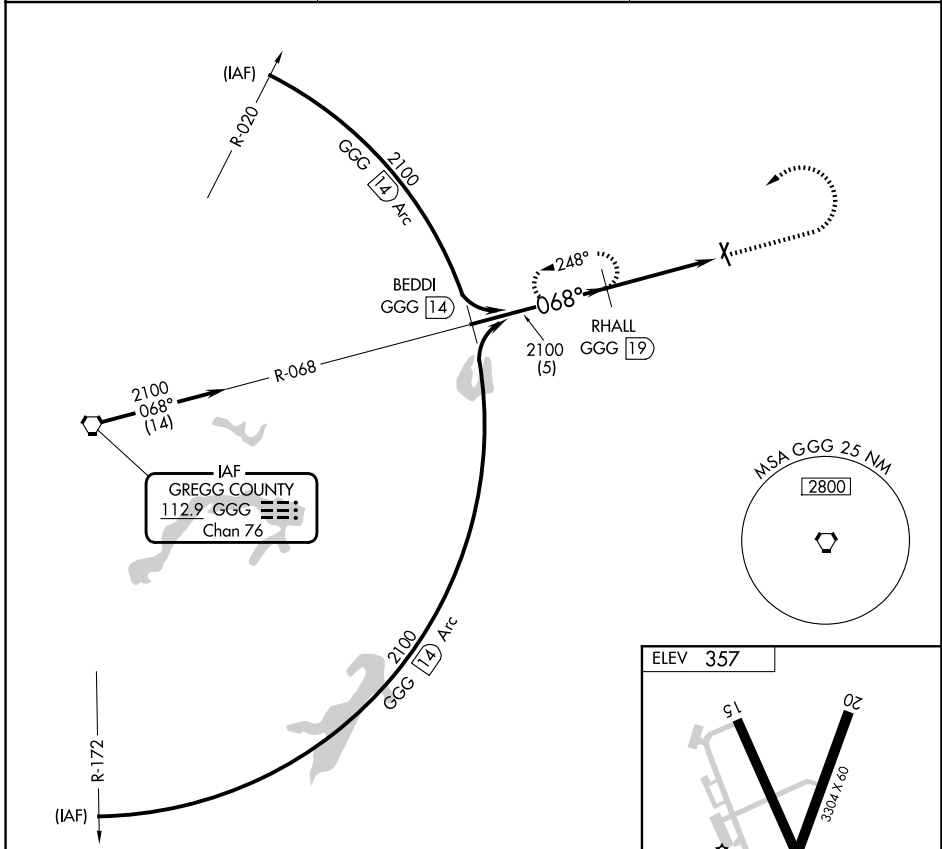
VORTAC GGG <b>112.9</b> Chan 76	APP CRS <b>068°</b>	Rwy Ldg TDZE Apt Elev	N/A N/A <b>357</b>
---------------------------------------	------------------------	-----------------------------	--------------------------

**VOR/DME-A**  
HARRISON COUNTY (ASL)

⚠ When local altimeter setting not received, use Longview altimeter setting and increase all MDA 60 feet; increase Cat B visibility to 1½. Night Landing; Rwy 2, 15, 20 NA. Helicopter visibility reduction below 1 SM NA.

⚠ MISSED APPROACH: Climb to 2100 then left turn via GGG R-068 to RHALL/GGG 19 DME and hold.

AWOS-3PT <b>118.675</b>	SHREVEPORT APP CON <b>119.9 335.55</b>	UNICOM <b>122.8</b> (CTAF) <b>0</b>
----------------------------	---	--



REIL Rwy 15 and 33 **0**  
MIRL Rwy 15-33 **0**

SC-2, 16 APR 2026 to 14 MAY 2026

SC-2, 16 APR 2026 to 14 MAY 2026