

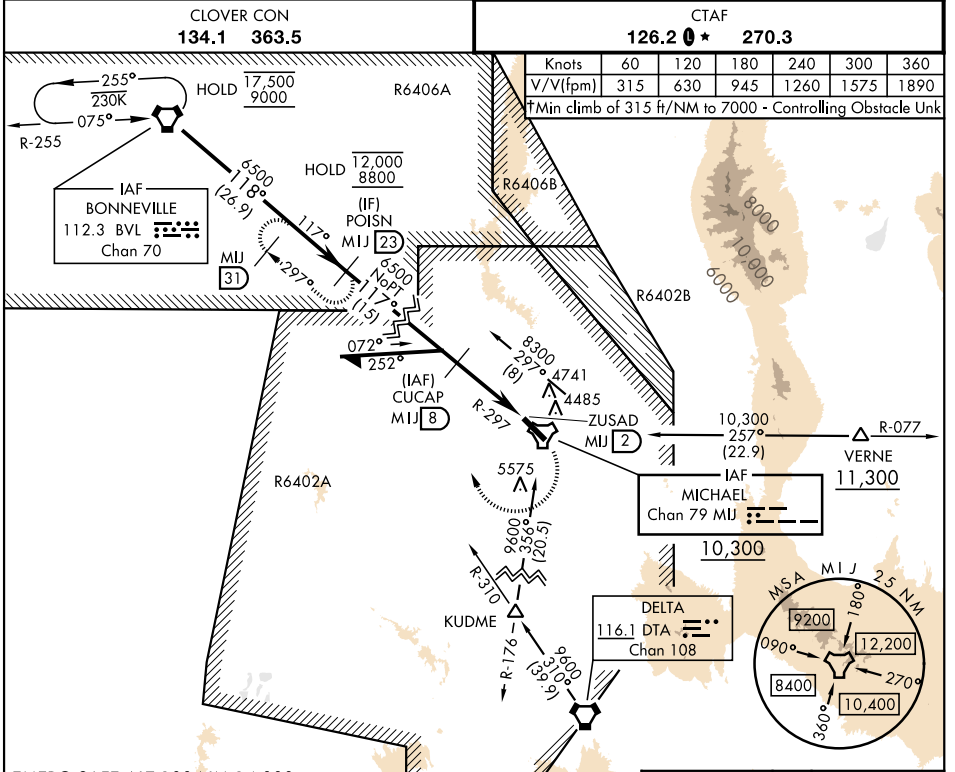
# TACAN RWY 12

TACAN MIJ Chan 79	APCH CRS 117°	Rwy Idg 10,000 TDZE 4344 Arprt Elev 4351
-------------------	---------------	--

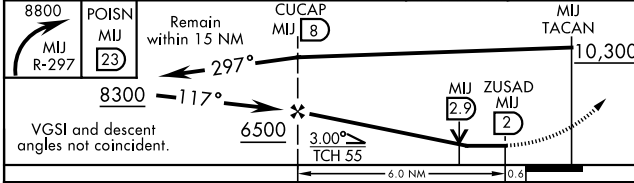
[USA] MICHAEL AAF (DUGWAY PROVING GROUND) (KDPG)

▼ Procedure NA for arrival on BVL VORTAC via V200 southwest bound without holding at Bonneville. ATC clearance required. Procedure lies within R6402A, PPR. Use KENV-ENV (Wendover) altimeter when local altimeter not available. VDP not authorized with KENV-ENV (Wendover) altimeter setting.

MISSED APPROACH: Climbing right turn to 8800 via MIJ TACAN R-297 to POISN/MIJ 23 DME and hold.

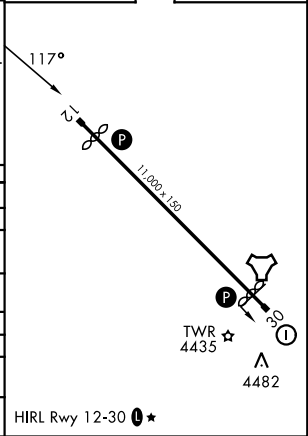


EMERG SAFE ALT 100 NM 14,000



ELEV	4351	TDZE	4344
------	------	------	------

CATEGORY	A	B	C	D	E
S-12†	4860-1	516 (600-1)	4860-1 $\frac{3}{8}$	516 (600-1 $\frac{3}{8}$ )	
S-12	5180-1 836 (900-1)	5180-1 $\frac{1}{4}$ 836 (900-1 $\frac{1}{4}$ )	5180-2 $\frac{1}{2}$	836 (900-2 $\frac{1}{2}$ )	
CIRCLING	5180-1 $\frac{1}{4}$	830 (900-1 $\frac{1}{4}$ )	5180-2 $\frac{1}{2}$ 830 (900-2 $\frac{1}{2}$ )	5880-3 1530 (1600-3)	6300-3 1950 (2000-3)
KENV - ENV (WENDOVER) ALTIMETER SETTING MINIMUMS					
S-12†	5020-1	676 (700-1)	5020-1 $\frac{7}{8}$	676 (700-1 $\frac{7}{8}$ )	
S-12	5340-1 $\frac{1}{4}$ 996(1000-1 $\frac{1}{4}$ )	5340-1 $\frac{1}{2}$ 996(1000-1 $\frac{1}{2}$ )	5340-3	996 (1000-3)	
CIRCLING	5340-1 $\frac{1}{4}$ 990(1000-1 $\frac{1}{4}$ )	5340-1 $\frac{1}{2}$ 990(1000-1 $\frac{1}{2}$ )	5340-3 990 (1000-3)	6040-3 1690(1700-3)	6460-3 2110 (2200-3)



DUGWAY PROVING GROUND, UTAH 40°12'N-112°56'W MICHAEL AAF (DUGWAY PROVING GROUND) (KDPG)

Amdt 4 19MAR26

# TACAN RWY 12

SW-4, 16 APR 2026 to 14 MAY 2026

SW-4, 16 APR 2026 to 14 MAY 2026