

WAAS CH <b>53401</b> <b>W04A</b>	APP CRS <b>043°</b>	Rwy Idg TDZE Apt Elev	<b>4500</b> <b>2132</b> <b>2135</b>
--	------------------------	-----------------------------	---

# RNAV (GPS) RWY 4

CATTARAUGUS COUNTY-OLEAN (OLE)

RNP APCH-GPS.

**▼** Circling NA to Rwys 16 and 34. Rwy 4 helicopter visibility reduction below 3/4 SM NA.  
When VGSI inop, Circling Rwy 22 NA at night. For uncompensated Baro-VNAV systems,  
LNAV/VNAV NA below -19°C or above 54°C.

MISSED APPROACH: Climb to 4500 direct UGASE and hold.

AWOS-3  
**118.375**

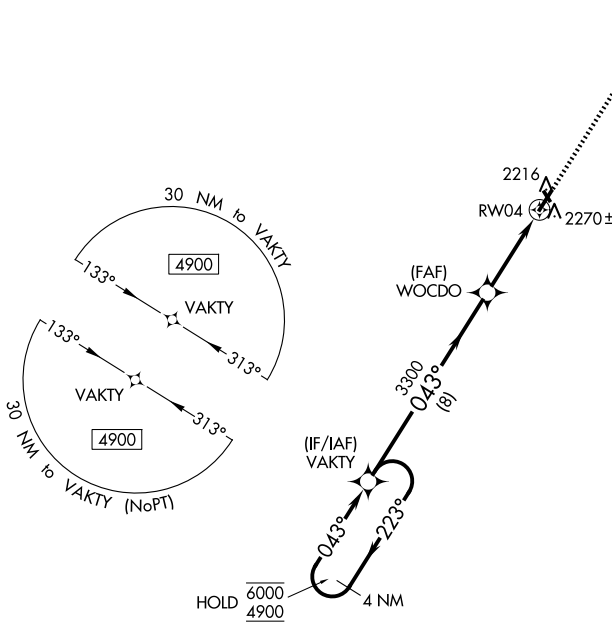
CLEVELAND CENTER  
**124.325 353.85**

UNICOM  
**122.8 (CTAF) 1**

MISSED APCH FIX



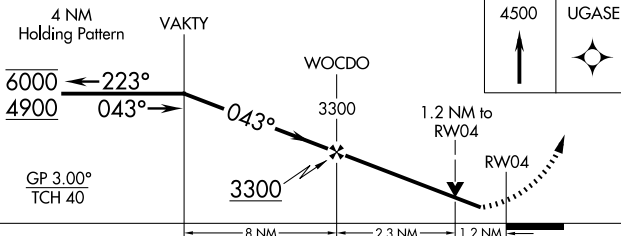
2709  
A



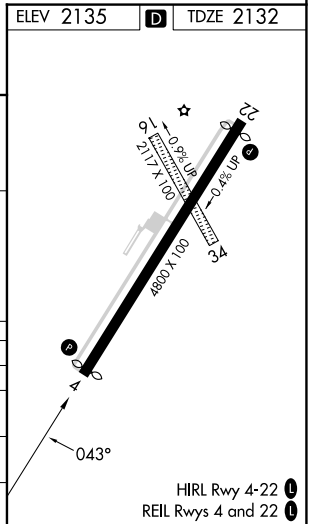
NE-2, 16 APR 2026 to 14 MAY 2026

NE-2, 16 APR 2026 to 14 MAY 2026

ELEV 2135 **D** TDZE 2132



CATEGORY	A	B	C	D
LPV DA		2382-3/4	250 (300-3/4)	
LNAV/VNAV DA		2549-1 1/8	417 (500-1 1/8)	
LNAV MDA	2560-1	428 (500-1)	2560-1 1/4	428 (500-1 1/4)
<b>C</b> CIRCLING	2620-1	485 (500-1)	2680-1 1/2 545 (600-1 1/2)	2720-2 585 (600-2)



HIRL Rwy 4-22 **1**  
REIL Rwys 4 and 22 **1**