

| | | |
|--|------------------------|---|
| WAAS CH 53411 W10A | APP CRS 103° | Rwy Idg 5849 TDZE 901 Apt Elev 911 |
|--|------------------------|---|

RNAV (GPS) RWY 10

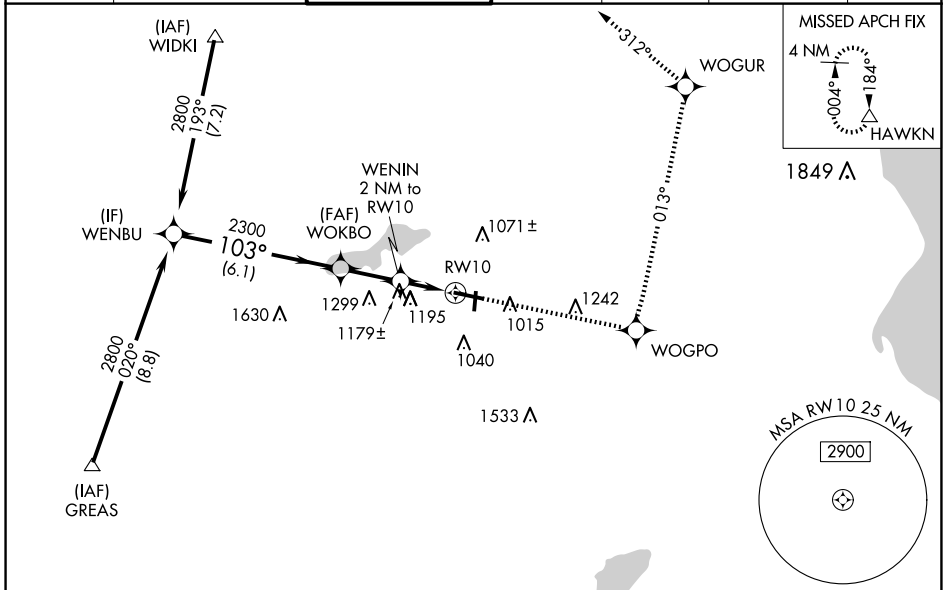
WAUKESHA COUNTY (UES)

Baro-VNAV NA when using Lawrance J Timmerman altimeter setting. For uncompensated Baro-VNAV systems, LNAV/VNAV NA below -16°C (4°F) or above 54°C (130°F). DME/DME RNP-0.3 NA. When local altimeter setting not received, use Lawrance J Timmerman altimeter setting: increase LPV DA to 1147 feet, LNAV/VNAV DA to 1583 feet and all Cats visibility ½ SM; increase all MDAs 60 feet and Circling Cat C and D visibility ½ SM.

MALSR

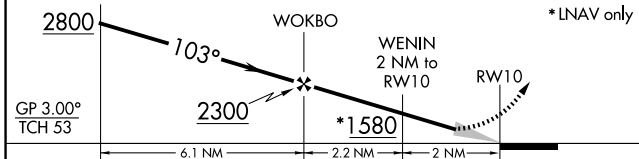
MISSED APPROACH: Climb to 3000 direct WOGPO and left turn on track 013° to WOGUR and track 312° to HAWKN and hold.

| | | | | | | |
|------------------------|--|---|-------------------------|--------------------------|---|-------------------------|
| ATIS 118.875 | MILWAUKEE APP CON 125.35 307.0 | WAUKESHA TOWER ★ 123.7 (CTAF) | GND CON 121.6 | CLNC DEL 121.6 | CLNC DEL 128.7 (When twr closed) | UNICOM 122.95 |
|------------------------|--|---|-------------------------|--------------------------|---|-------------------------|



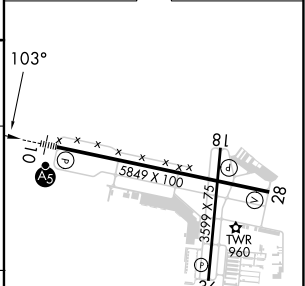
Procedure NA for arrivals at GREAS via V63 southwest bound.

| | | | | |
|-------------------|------|-------|---------|---------|
| Procedure Turn NA | 3000 | WOGPO | WOGUR | HAWKN |
| | | | tr 013° | |
| | | | | tr 312° |
| | | | | |



| CATEGORY | A | B | C | D |
|--------------|-----------------------|-----------------------|-----------------------|-------------------------|
| LPV DA | | 1101-½ | 200 (200-½) | |
| LNAV/VNAV DA | | 1537-¾ | 636 (700-¾) | |
| LNAV MDA | 1440-½ | 539 (600-½) | 1440-1 539 (600-1) | 1440-¼ 539 (600-¼) |
| CIRCLING | 1460-1 549 (600-1) | 1500-1 589 (600-1) | 1540-¾ 629 (700-¾) | 1640-2¼ 729 (800-2¼) |

| | |
|----------|----------|
| ELEV 911 | TDZE 901 |
|----------|----------|



| |
|--------------------|
| HIRL Rwy 10-28 |
| MIRL Rwy 18-36 |
| REIL Rwy 28 |
| REIL Rwy 18 and 36 |

EC-3, 16 APR 2026 to 14 MAY 2026

EC-3, 16 APR 2026 to 14 MAY 2026