

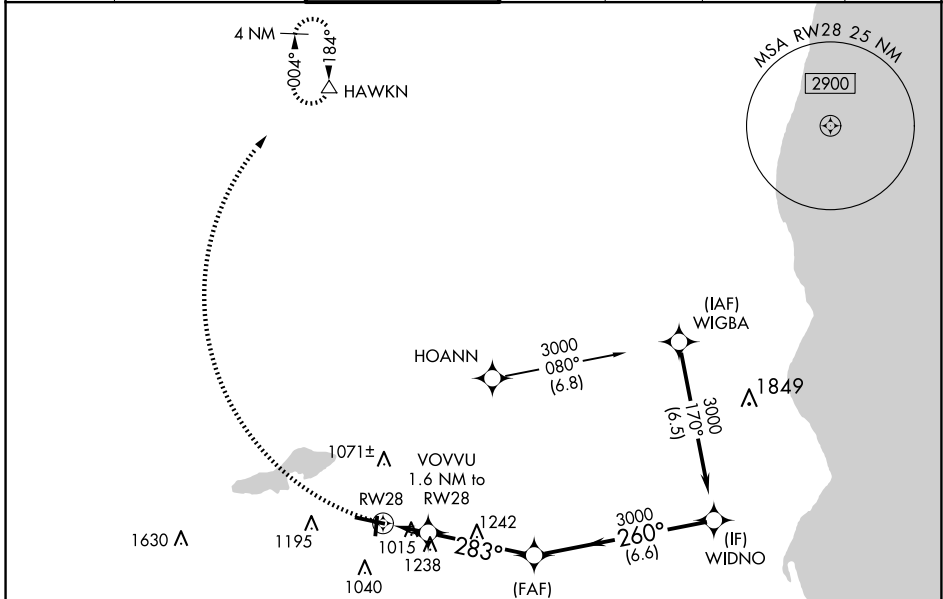
APP CRS	Rwy Ldg	5849
283°	TDZE	906
	Apt Elev	912

RNAV (GPS) RWY 28

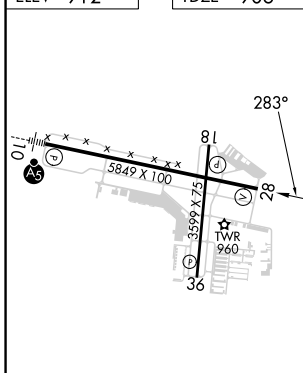
WAUKESHA COUNTY (U/ES)

RNP APCH - GPS.		MISSED APPROACH: Climbing right turn to 3000 direct HAWKN and hold.			
<p>⚠ Rwy 28 helicopter visibility reduction below 1 SM NA. When local altimeter setting not received, use MWC altimeter setting and increase all MDAs 60 feet and LNAV visibility Cats C and D ½ SM, and Circling visibility Cats C and D ¼ SM.</p>					

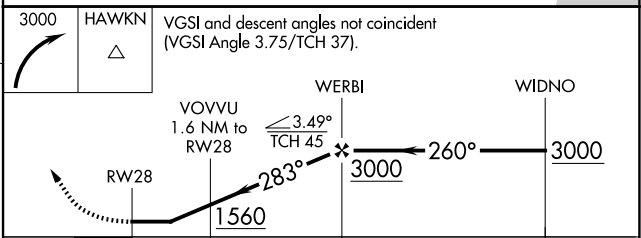
ATIS 118.875	MILWAUKEE APP CON 125.35 307.0	WAUKESHA TOWER ★ 123.7 (CTAF) 0	GND CON 121.6	CLNC DEL 121.6	CLNC DEL 128.7 (When twr closed)	UNICOM 122.95
------------------------	--	---	-------------------------	--------------------------	---	-------------------------



ELEV 912	TDZE 906
----------	----------



3000	HAWKN	VGSI and descent angles not coincident (VGSI Angle 3.75/TCH 37).
------	-------	--



HIRL Rwy 10-28 0
MIRL Rwy 18-36 0
REIL Rwy 28 0
REIL Rwy 18 and 36

CATEGORY	A	B	C	D
LNAV MDA	1500-1 594 (600-1)		1500-1¾ 594 (600-1¾)	
CIRCLING	1500-1 588 (600-1)		1540-1¾ 628 (700-1¾)	1640-2¼ 728 (800-2¼)

EC-3, 16 APR 2026 to 14 MAY 2026

EC-3, 16 APR 2026 to 14 MAY 2026