

MERIDIAN, MISSISSIPPI

HI-ILS X or LOC/DME X RWY 19L

LOC/DME I-NMM 109.7 Chan 34	APCH CRS 191°	Rwy ldg TDZE Arprt Elev 8000 316 316
---	-------------------------	--

[USN]

MERIDIAN NAS (MC CAIN FIELD) (KNMM)

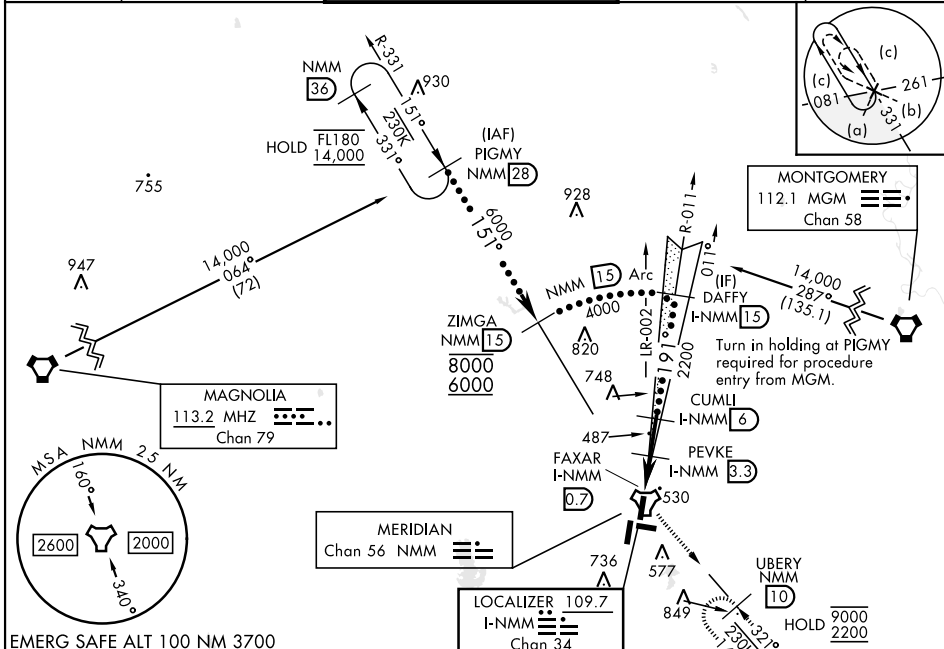
TACAN required

*When ALS inop, increase vis to 3/4 mile.
 **When ALS inop, increase vis to 1 1/4 miles.
 ***Circling CAT C remain within 1.7 NM,
 CAT D within 2.3 NM, CAT E within 4.5 NM.



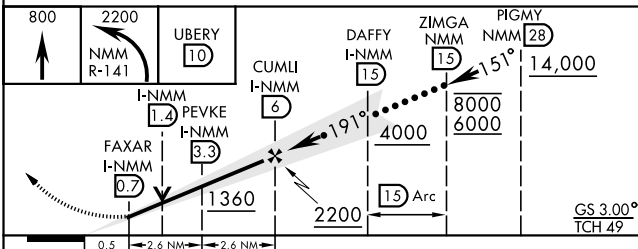
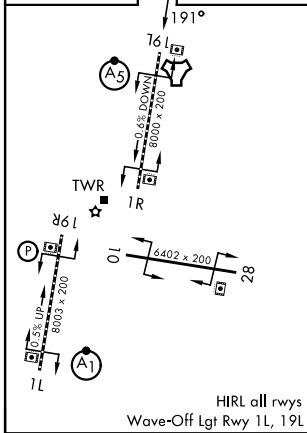
MISSED APPROACH: Climb to 800, then climbing left turn to 2200 intercept NMM TACAN R-141 to UBERY and hold.

APP CON ATIS ★ 290.525	(S) 120.5 269.325 (N) 379.275 (W) 120.95 276.4 (E) 121.275 348.7	MC CAIN TOWER ★ 126.2 340.2 Rwy 01L, 19L, and 28 126.2 360.2 Rwy 01R, 19R, and 10	MC CAIN GND CON 336.4	ASR/PAR
-------------------------------------	---	---	---------------------------------	---------



EMERG SAFE ALT 100 NM 3700

ELEV	316	TDZE	316
------	-----	------	-----



CATEGORY	C	D	E
S-ILS 19L *	516-1/2	200	(200-1/2)
S-LOC 19L **	740-3/4	424	(500-3/4)
CIRCLING ***	840-1 1/2	880-2	1080-2 3/4
	524 (600-1/2)	564 (600-2)	764 (800-2 3/4)

MERIDIAN, MISSISSIPPI

32° 33' N - 88° 33' W

MERIDIAN NAS (MC CAIN FIELD) (KNMM)

Amdt1 22JAN26

HI-ILS X or LOC/DME X RWY 19L

SC-4, 16 APR 2026 to 14 MAY 2026

SC-4, 16 APR 2026 to 14 MAY 2026