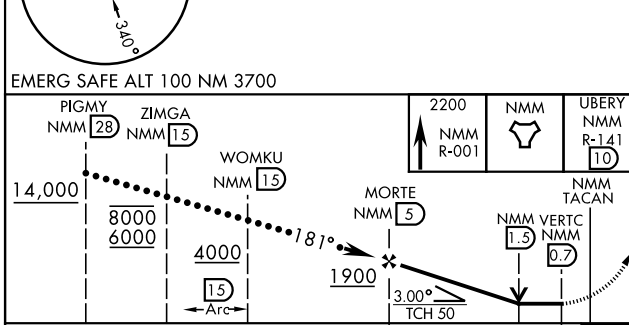
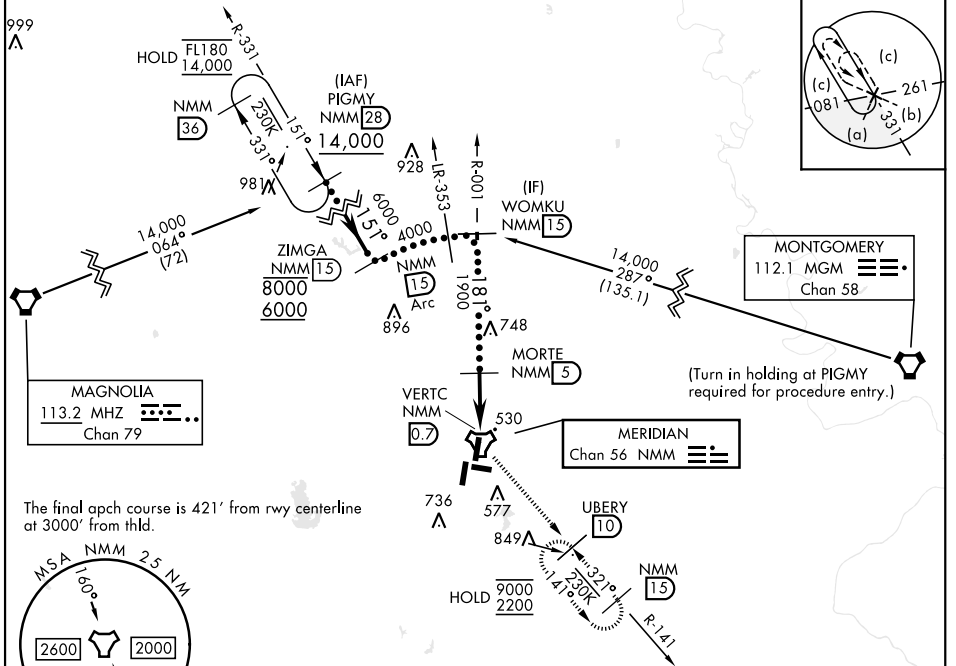


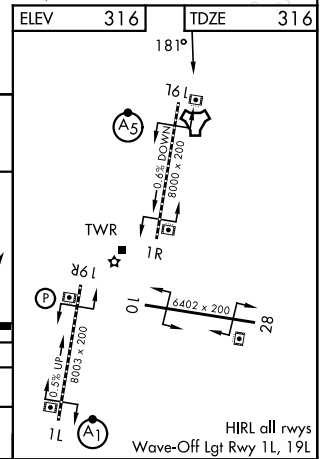
TACAN NMM Chan <b>56</b>	APCH CRS <b>181°</b>	Rwy ldg TDZE Arprt Elev <b>8000</b> <b>316</b> <b>316</b>	[USN]	MERIDIAN NAS (MC CAIN FIELD) (KNMM)
-----------------------------	-------------------------	--	-------	-------------------------------------

▼ \* When ALS inop, increase vis to 1 3/8 miles.  
 \*\* Circling CAT C remain within 1.7 NM, CAT D within 2.3 NM, CAT E within 4.5 NM.

APP CON ATIS ★ <b>290.525</b>	(S) <b>120.5 269.325</b> (N) <b>379.275</b> (W) <b>120.95 276.4</b> (E) <b>121.275 348.7</b>	MC CAIN TOWER ★ <b>126.2 340.2</b> Rwy 01L, 19L, and 28 <b>126.2 360.2</b> Rwy 01R, 19R, and 10	MC CAIN GND CON <b>336.4</b>	ASR/PAR
-------------------------------------	---	---	---------------------------------	---------



CATEGORY	C	D	E
S-19L *	800-1	484	(500-1)
CIRCLING**	840-1 1/2 524 (600-1 1/2)	880-2 564 (600-2)	1080-2 3/4 764 (800-2 3/4)



SC-4, 16 APR 2026 to 14 MAY 2026

SC-4, 16 APR 2026 to 14 MAY 2026