

MERIDIAN, MISSISSIPPI

ILS W or LOC/DME W RWY 19L

LOC/DME I-NMM 109.7 Chan 34	APCH CRS 191°	Rwy Ldg TDZE Arprt Elev 8000 316 316
---	-------------------------	--

[USN]

MERIDIAN NAS (MC CAIN FIELD) (KNMM)

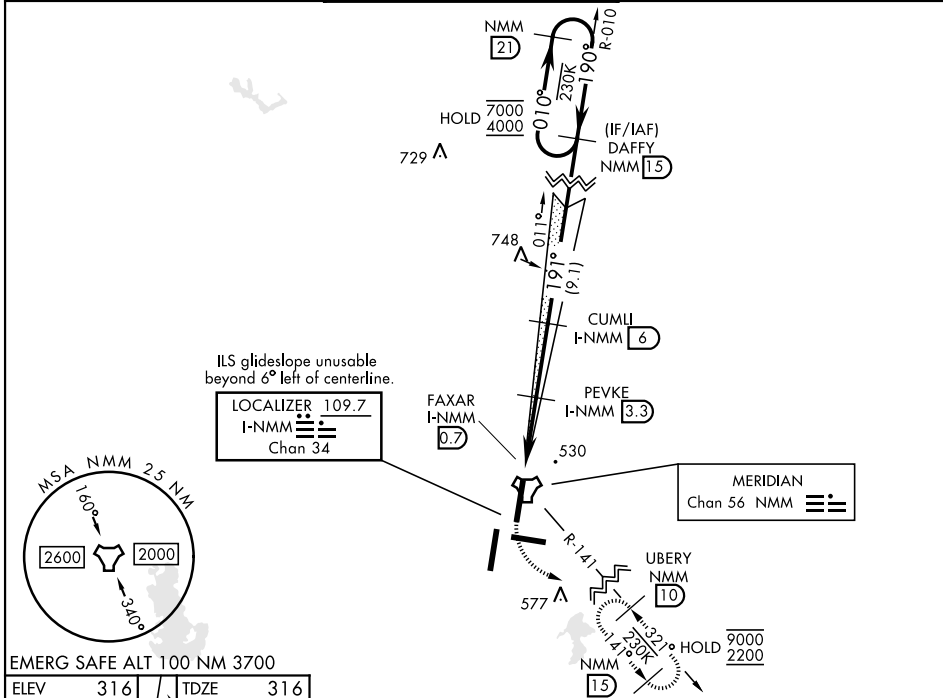
TACAN and RADAR required.

▲**When ALS inop, increase vis to ¾ mile.
 ▲**When ALS inop, increase CAT AB vis to 1 mile, CAT CDE vis to 1¼ miles.
 ▲***Circling CAT B remain within 1.5 NM, CAT C within 1.7 NM, CAT D within 2.3 NM, CAT E within 4.5 NM.



MISSED APPROACH: Climb to 800, then climbing left turn to 2200 to intercept NMM TACAN R-141 to UBERY and hold.

APP CON ATIS ★ 290.525	120.5 269.325 (S) 379.275 (N) 120.95 276.4 (W) 121.275 348.7 (E)	MC CAIN TOWER ★ 126.2 340.2 (01L, 19L, 28) 126.2 360.2 (01R, 19R, 10)	MC CAIN GND CON 336.4	ASR/PAR
-------------------------------------	---	---	---------------------------------	---------



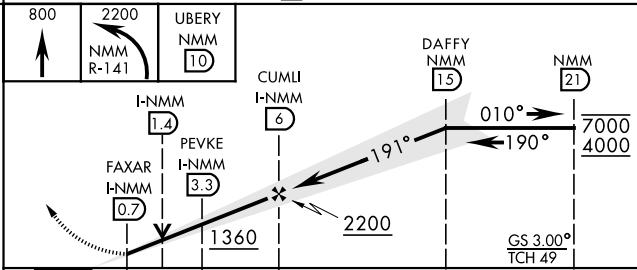
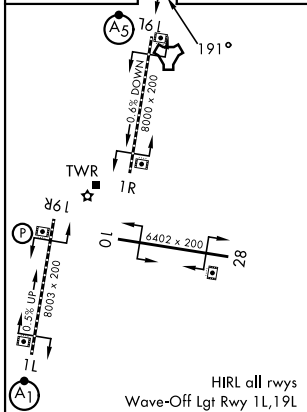
ILS glideslope unusable beyond 6° left of centerline.

LOCALIZER 109.7 I-NMM Chan 34

MERIDIAN Chan 56 NMM

EMERG SAFE ALT 100 NM 3700

ELEV 316	TDZE 316
----------	----------



CATEGORY	A	B	C	D	E
S-ILS 19L*	516-½		200	(200-½)	
S-LOC 19L**	740-½	424 (500-½)	740-¾		424 (500-¾)
CIRCLING***	820-1	840-1	840-1½	880-2	1080-2¾
	504 (600-1)	524 (600-1)	524 (600-1½)	564 (600-2)	764 (800-2¾)

MERIDIAN, MISSISSIPPI

32°33'N-88°33'W

MERIDIAN NAS (MC CAIN FIELD) (KNMM)

Amdt 1 22JAN26

ILS W or LOC/DME W RWY 19L

SC-4, 16 APR 2026 to 14 MAY 2026

SC-4, 16 APR 2026 to 14 MAY 2026