

MERIDIAN, MISSISSIPPI

RNAV (GPS) RWY 19L

WAAS CH 78906 W19A	APCH CRS 191°	Rwy ldg TDZE Arpt Elev	8000 316 316
---------------------------------	-------------------------	------------------------------	---

(USN) (MIL)

MERIDIAN NAS (MC CAIN FLD) (KNMM)

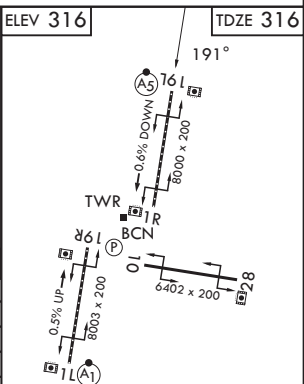
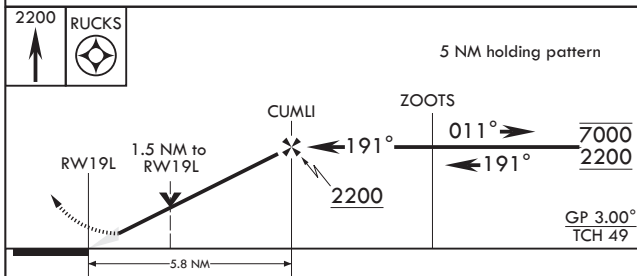
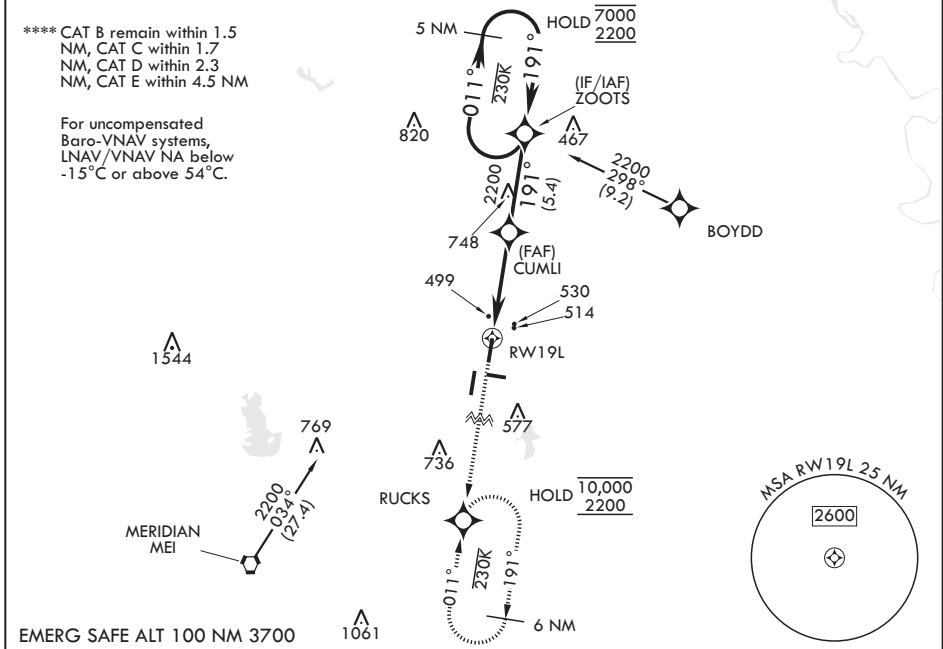
RNP APCH.

▼ * When ALS inop, increase vis to 3/4 mile.
 ** When ALS inop, increase vis to 1 3/8 miles.
 *** When ALS inop, increase CAT AB vis to 1 mile,
 increase CAT CDE vis to 1 1/2 miles.



MISSED APPROACH: Climb to 2200 direct RUCKS and hold.

ATIS★ 290.525	APP CON 120.5 269.325 S 379.275 N 120.95 276.4 W 121.275 348.7 E	MC CAIN TOWER★ 126.2 340.2 RWY 01L, 19L AND 28 126.2 360.2 RWY 01R, 19R AND 10	MC CAIN GND CON 336.4	ASR/PAR
-------------------------	--	--	---------------------------------	---------



CATEGORY	A	B	C	D	E
LPV DA*	516-1/2		200	(200-1/2)	
LNAV/VNAV DA**	836-1		520	(600-1)	
LNAV MDA***	840-1/2	524 (600-1/2)	840-1	524 (600-1)	
CIRCLING****	840-1	524 (600-1)	840-1 1/2 (600-1 1/2)	880-2 (600-2)	1080-2 3/4 (800-2 3/4)

MERIDIAN, MISSISSIPPI
Amdt 5 27NOV25

32°33'N - 88°33'W

MERIDIAN NAS (MC CAIN FLD) (KNMM)

RNAV (GPS) RWY 19L

SC-4, 16 APR 2026 to 14 MAY 2026

SC-4, 16 APR 2026 to 14 MAY 2026