

MERIDIAN, MISSISSIPPI

# RNAV (GPS) RWY 1L

APCH CRS	Rwy ldg	<b>8003</b>
011°	TDZE	<b>254</b>
	Arprt Elev	<b>316</b>

(USN)

MERIDIAN NAS (MC CAIN FLD) (KNMM)

RNP APCH

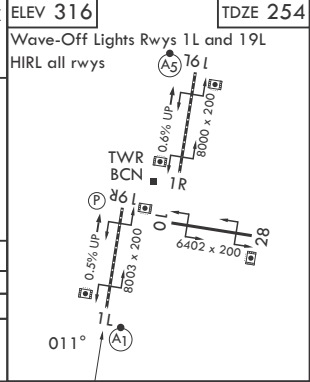
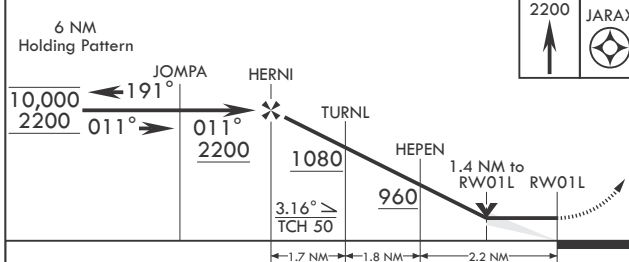
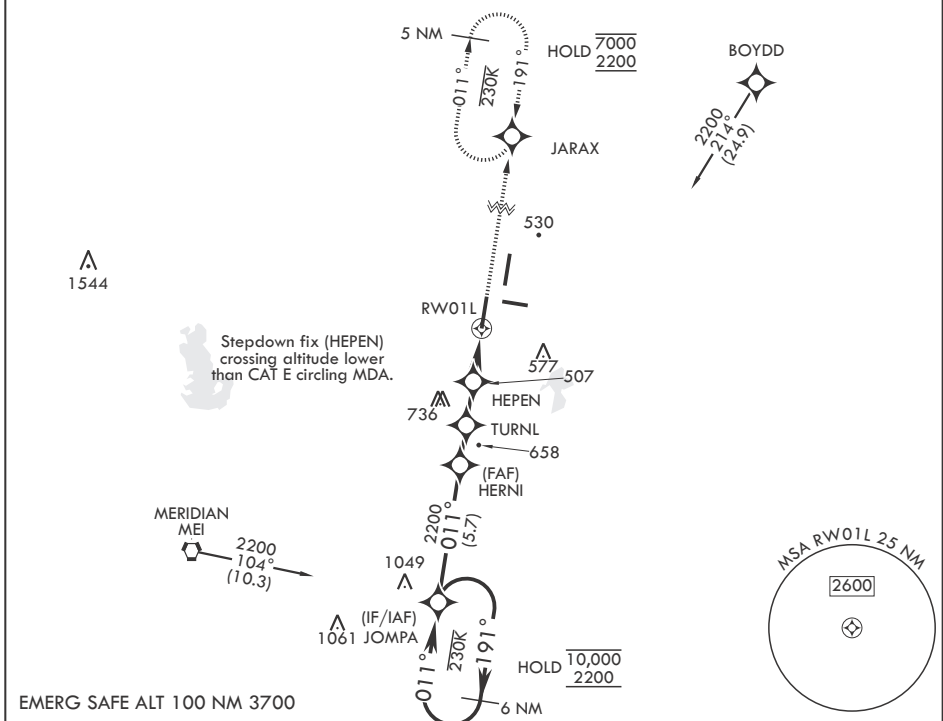
ALSF-1

MISSED APPROACH: Climb to 2200 direct JARAX and hold.

▼ \* When ALS inop, increase CAT AB vis to 1 mile, CAT CDE to 1 3/8 miles.  
 \*\*CAT B remain within 1.5 NM, CAT C within 1.7 NM, CAT D within 2.3 NM, CAT E within 4.5 NM.



ATIS★ <b>290.525</b>	APP CON <b>120.5 269.325 S</b> <b>379.275 N</b> <b>120.95 276.4 W</b> <b>121.275 348.7 E</b>	MC CAIN TOWER★ <b>126.2 340.2</b> RWY 01L, 19L AND 28 <b>126.2 360.2</b> RWY 01R, 19R AND 10	MC CAIN GND CON <b>336.4</b>	ASR/PAR
-------------------------	--	--	---------------------------------	---------



CATEGORY	A	B	C	D	E
LNAV MDA*	760-½ 507 (500-½)	760-1 507 (500-1)	760-1 507 (500-1)	880-2 764 (800-2%)	1080-2¼ 764 (800-2%)
CIRCLING**	820-1 504 (600-1)	840-1 524 (600-1)	840-1½ 524 (600-1½)	880-2 564 (600-2)	1080-2¼ 764 (800-2%)

MERIDIAN, MISSISSIPPI

32°33'N - 88°33'W

MERIDIAN NAS (MC CAIN FLD) (KNMM)

Amdt 5 27NOV25

# RNAV (GPS) RWY 1L

SC-4, 16 APR 2026 to 14 MAY 2026

SC-4, 16 APR 2026 to 14 MAY 2026