

TACAN X RWY 19L

TACAN NMM Chan 56	APCH CRS 181°	Rwy Ldg TDZE Arprt Elev 8000 316 316
-----------------------------	-------------------------	--

[USN]

MERIDIAN NAS (MC CAIN FIELD) (KNMM)

RADAR required

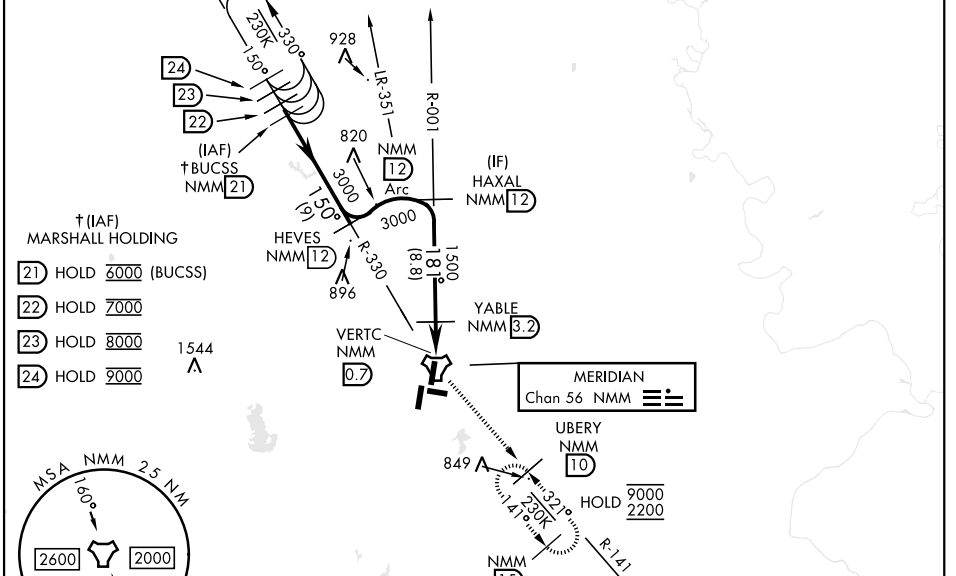
▼ *When ALS inop, increase CAT AB vis to 1 miles; CAT CD vis to 1½ miles.
**Circling CAT B remain within 1.5 NM, CAT C within 1.7 NM, CAT D within 2.3 NM.

MALSR
A5

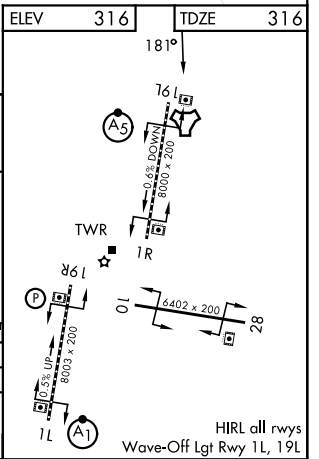
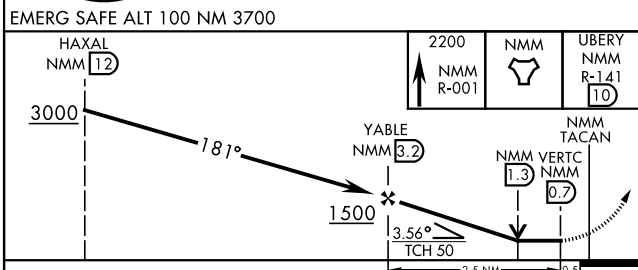
MISSED APPROACH: Climb to 2200 direct NMM TACAN then turn left NMM R-141 direct UBERY and hold.

ATIS ★ 290.525	APP CON 120.5 269.325 (S) 379.275 (N) 120.95 276.4 (W) 121.275 348.7 (E)	MC CAIN TOWER ★ 126.2 340.2 Rwy 01L, 19L, and 28 126.2 360.2 Rwy 01R, 19R, and 10	MC CAIN GND CON 336.4	ASR/PAR
--------------------------	--	---	---------------------------------	---------

CV-1 PROCEDURE: USE RESTRICTED TO TW-1 AIRCRAFT ONLY.



ELEV	316	TDZE	316
------	-----	------	-----



CATEGORY	A	B	C	D
S-19L*	780-½ 464 (500-½)		780-1 464 (500-1)	
CIRCLING**	820-1 504 (600-1)	840-1 524 (600-1)	840-1½ 524 (600-1½)	880-2 564 (600-2)

TACAN X RWY 19L

SC-4, 16 APR 2026 to 14 MAY 2026

SC-4, 16 APR 2026 to 14 MAY 2026

HIRL all rwys
Wave-Off Lgt Rwy 1L, 19L