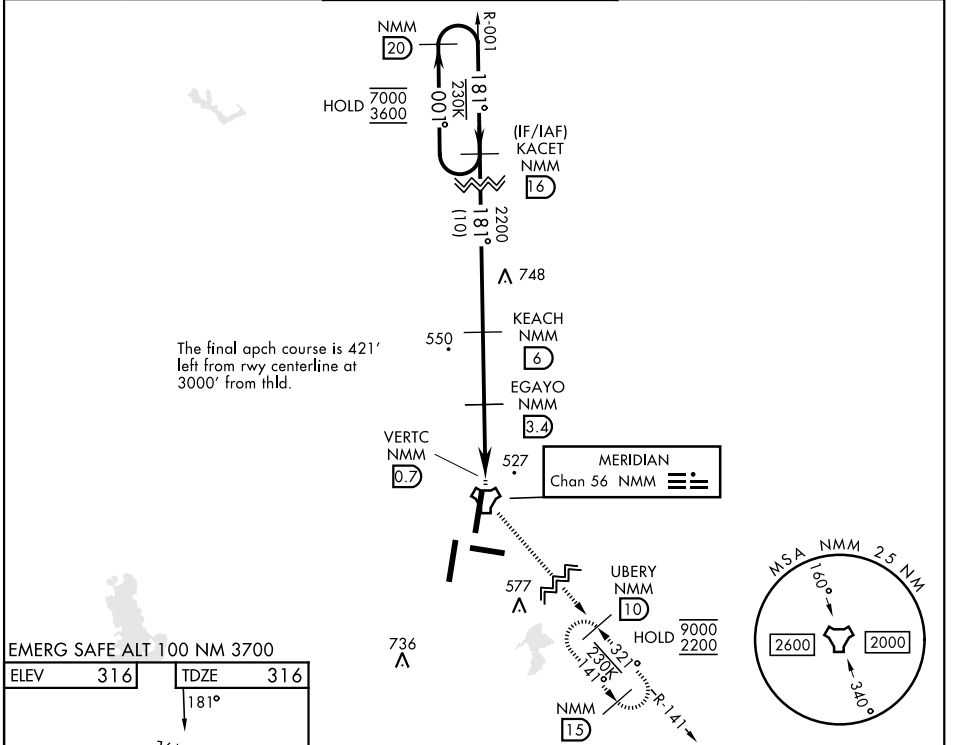


MERIDIAN, MISSISSIPPI

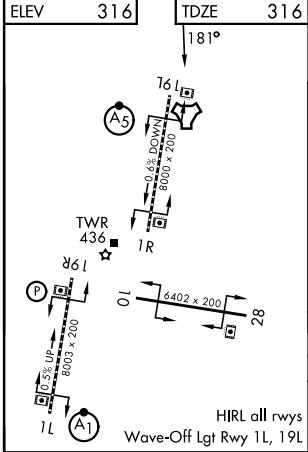
TACAN Y RWY 19L

TACAN NMM Chan 56	APCH CRS 181°	Rwy ldg TDZE Arprt Elev 8000 316 316	[USN]	MERIDIAN NAS (MC CAIN FIELD) (KNMM)
-----------------------------	-------------------------	--	-------	-------------------------------------

RADAR required		MALSR 	MISSED APPROACH: Climb to 2200 direct NMM TACAN then turn left NMM R-141 direct UBERY and hold.	
**When ALS inop, increase CAT AB vis to 1 mile; CDE vis to 1½ miles. **Circling CAT B remain within 1.5 NM, CAT C within 1.7 NM, CAT D within 2.3 NM, CAT E within 4.5 NM.				
APP CON	MC CAIN TOWER ★	MC CAIN GND CON	ASR/PAR	
ATIS ★ 290.525	120.5 269.325 (S) 379.275 (N) 120.95 276.4 (W) 121.275 348.7 (E)	126.2 340.2 Rwy 01L, 19L, and 28 126.2 360.2 Rwy 01R, 19R, and 10	336.4	



EMERG SAFE ALT 100 NM 3700



ELEV	316	TDZE	316
181°			
NMM 20	KACET NMM 16	KEACH NMM 6	EGAYO NMM 3.4
7000	3600	2200	2200
001°	181°	181°	VERTC NMM 0.7
		1360	UBERY NMM 10
		2.97°	
		TCH 50	
		2.7 NM	0.5

CATEGORY	A	B	C	D	E
S-19L *	780 ½	464 (500-½)	780-1	464	(500-1)
CIRCLING **	820-1 504 (600-1)	840-1 524 (600-1)	840-1½ 524 (600-1½)	880-2 564 (600-2)	1080-2¾ 764 (800-2¾)

MERIDIAN, MISSISSIPPI 32° 33' N - 88° 33' W MERIDIAN NAS (MC CAIN FIELD) (KNMM)

Amtd 3 22JAN26

TACAN Y RWY 19L

SC-4, 16 APR 2026 to 14 MAY 2026

SC-4, 16 APR 2026 to 14 MAY 2026