

MERIDIAN, MISSISSIPPI

# TACAN Y RWY 1L

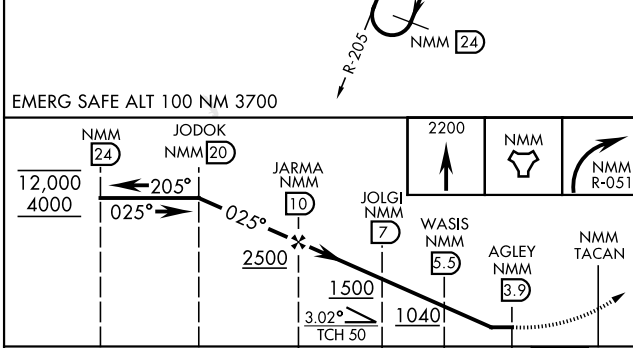
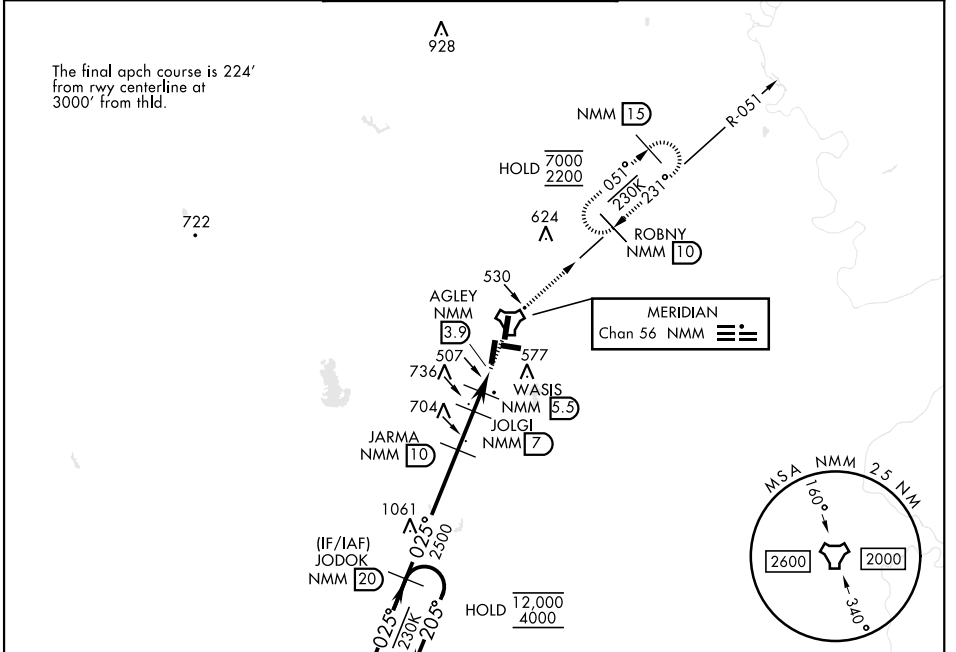
TACAN NMM Chan <b>56</b>	APCH CRS <b>025°</b>	Rwy ldg TDZE Arprt Elev <b>8003</b> <b>254</b> <b>316</b>
-----------------------------	-------------------------	--

[USN]

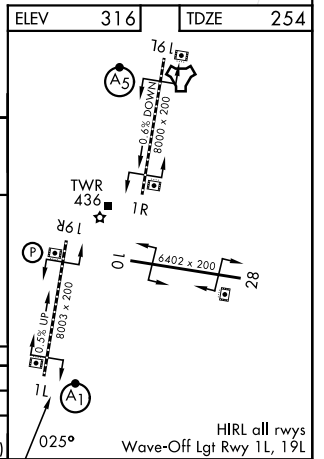
MERIDIAN NAS (MC CAIN FIELD) (KNMM)

RADAR required		ALSF-1 	MISSED APPROACH: Climb to 2200 direct NMM TACAN then right turn via NMM R-051 to ROBNY and hold.
<p>* When ALS inop, increase CAT AB vis to 1 mile; CAT CDE vis to 1½ miles. ** Circling CAT B remain within 1.5 NM, CAT C within 1.7 NM, CAT D within 2.3 NM, CAT E within 4.5 NM.</p>			

APP CON	MC CAIN TOWER ★	MC CAIN GND CON	ASR/PAR
ATIS ★ <b>290.525</b> 120.5 269.325 (S) 379.275 (N) 120.95 276.4 (W) 121.275 348.7 (E)	<b>126.2 340.2</b> Rwy 01L, 19L, and 28 <b>126.2 360.2</b> Rwy 01R, 19R, and 10	<b>336.4</b>	



EMERG SAFE ALT 100 NM 3700					
CATEGORY	A	B	C	D	E
S-1L *	760-½	507 (500-½)	760-1	507 (500-1)	
CIRCLING **	820-1	840-1	840-1½	880-2	1080-2¾
	504 (600-1)	524 (600-1)	524 (600-1½)	564 (600-2)	764 (800-2¾)



MERIDIAN, MISSISSIPPI 32°33' N - 88°33' W MERIDIAN NAS (MC CAIN FIELD) (KNMM)

Amdt 4 22JAN26

# TACAN Y RWY 1L

SC-4, 16 APR 2026 to 14 MAY 2026

SC-4, 16 APR 2026 to 14 MAY 2026

HIRL all rwys  
Wave-Off Lgt Rwy 1L, 19L