

LOC I-FHU	APP CRS	Rwy Ldg TDZE	12001 4629
<b>109.9</b>	<b>260°</b>	Apt Elev	<b>4719</b>

# ILS or LOC RWY 26

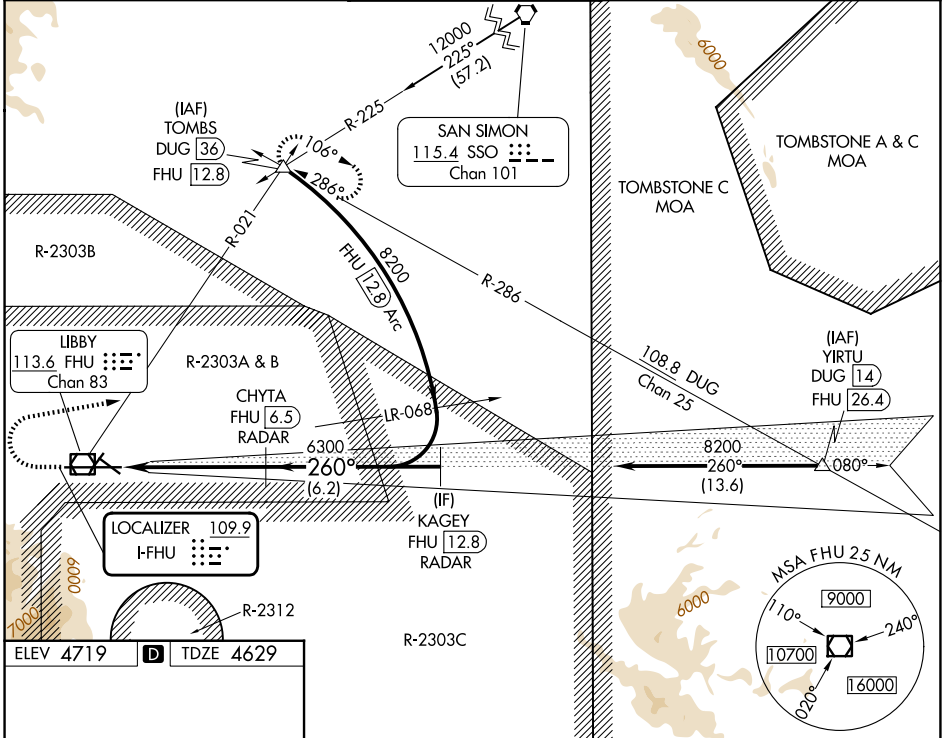
SIERRA VISTA MUNI-LIBBY AAF (FHU)

DME or RADAR required.

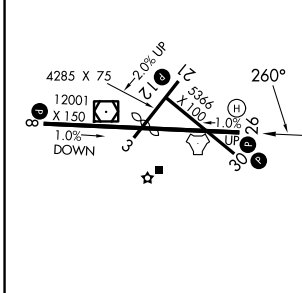
**⚠** Circling NA south of Rwy 8 and 30.

**MISSED APPROACH:** Climb to 5300 then climbing right turn to 9500 on heading 067° and FHU VOR/DME R-021 to TOMBS INT/DUG 36 DME and hold, continue climb-in-hold to 9500.

ATIS	LIBBY AAF GCA*	LIBBY TOWER*	GND CON	UNICOM
<b>134.75 263.025</b>	<b>127.05 254.25</b>	<b>124.95 (CTAF) 284.75</b>	<b>121.7 268.7</b>	<b>122.95</b>



ELEV 4719	<b>D</b>	TDZE 4629
-----------	----------	-----------



5300	9500	TOMBS	VGSI and ILS glidepath not coincident (VGSI Angle 3.00/TCH 50).	KAGEY
↑	hdg 067°	FHU R-021	CHYTA	FHU 12.8
			FHU 6.5	RADAR
			RADAR	
			FHU 1.4	
			6300	
			8200	
			6300	
			GS 3.00°	
			TCH 49	
			5.2 NM	
			6.2 NM	

HIRL Rwy 8-26	
MIRL Rwy 3-21 and 12-30	
FAF to MAP 5.2 NM	
Knots	60 90 120 150 180
Min:Sec	5:12 3:28 2:36 2:05 1:44
CATEGORY	A B C D
S-ILS 26	4829-¾ 200 (200-¾)
S-LOC 26	5020-1 391 (400-1) 5020-1¼ 391 (400-1¼)
CIRCLING	5160-1 441 (500-1) 5180-1 461 (500-1) 5180-1½ 461 (500-1½) 5280-2 561 (600-2)

SW-4, 16 APR 2026 to 14 MAY 2026

SW-4, 16 APR 2026 to 14 MAY 2026