

APP CRS	Rwy Ldg	5201
150°	TDZE	1600
	Apt Elev	1623

RNAV (GPS) RWY 15

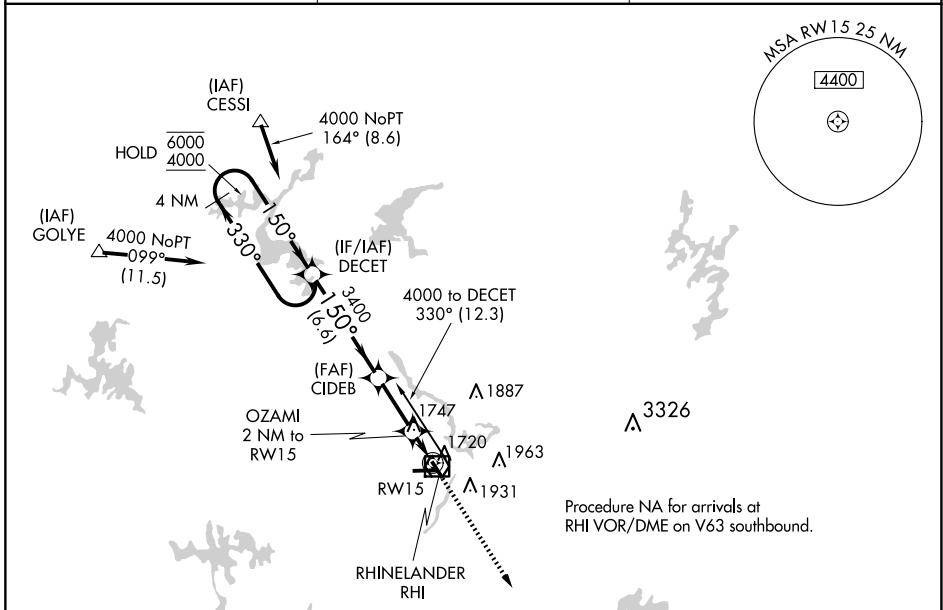
RHINELANDER/ONEIDA COUNTY (RHI)

RNP APCH - GPS.

⚠ Rwy 15 helicopter visibility reduction below 3/4 SM NA.

MISSED APPROACH:
Climb to 3500 direct CIREN and hold.

ASOS 126.825	MINNEAPOLIS CENTER 133.65 281.5	UNICOM 123.0 (CTAF)
-------------------------------	--	--------------------------------------

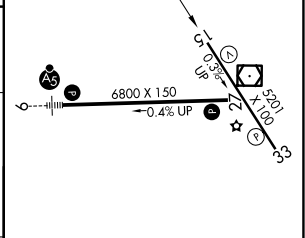
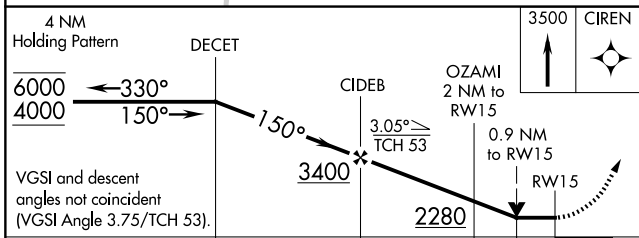


EC-3, 16 APR 2026 to 14 MAY 2026

EC-3, 16 APR 2026 to 14 MAY 2026



ELEV 1623	D	TDZE 1600
-----------	----------	-----------



CATEGORY	A	B	C	D
LNVA MDA	2000-1	400 (400-1)	2000-1 1/8	400 (400-1 1/8)
C CIRCLING	2100-1 477 (500-1)	2260-1 637 (700-1)	2260-1 3/4 637 (700-1 3/4)	2280-2 657 (700-2)

HIRL Rws 9-27 and 15-33 **Ⓛ**
REIL Rws 15, 27 and 33 **Ⓛ**