

WAAS CH <b>40329</b> <b>W30A</b>	APP CRS <b>300°</b>	Rwy Ldg TDZE Apt Elev	<b>5199</b> <b>656</b> <b>656</b>
--	------------------------	-----------------------------	---

# RNAV (GPS) RWY 30

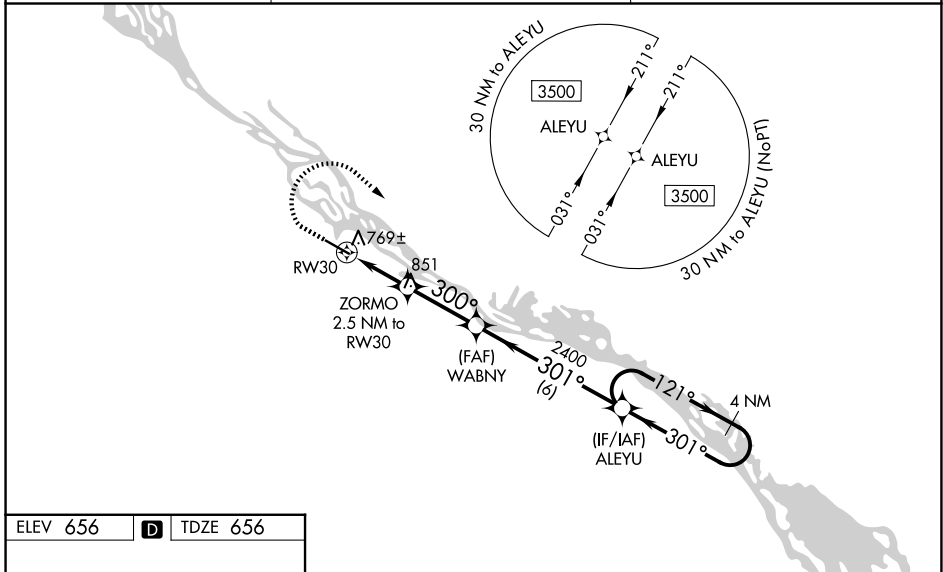
WINONA MUNI/MAX CONRAD FLD (ON A)

**⚠** For uncompensated Baro-VNAV systems, LNAV/VNAV NA below -16°C (4°F) or above 54°C (130°F). DME/DME RNP-0.3 NA.  
**⚠** When local altimeter setting not received, use La Crosse altimeter setting and increase all LPV DA to 1064 feet and visibility 1/8 mile all Cats, all LNAV/VNAV DA to 1193 and visibility 1/8 mile all Cats, and all MDA 60 feet, increase LNAV Cat C/D and Circling Cat B visibility 1/4 mile. For inop ALS when using La Crosse altimeter setting, increase LPV all Cats visibility to 1 3/8 mile. For inop ALS when using La Crosse altimeter setting, increase LPV all Cats visibility to 1 3/8 mile, and LNAV Cats C/D visibility to 2 mile. Baro-VNAV and VDP NA when using La Crosse altimeter setting.

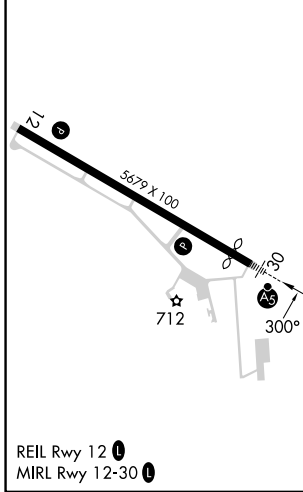


**MISSED APPROACH:**  
 Climb to 1800 then climbing right turn to 3500 direct ALEYU and hold.

AWOS-3 <b>118.075</b>	MINNEAPOLIS CENTER <b>128.6 363.0</b>	UNICOM <b>122.8 (CTAF) 0</b>
--------------------------	--	---------------------------------



ELEV 656	<b>D</b>	TDZE 656
----------	----------	----------



	1800	3500	ALEYU	
	↑	↷	✧	
*LNAV only	ZORMO 2.5 NM to RW30		WABNY 2400	ALEYU 4 NM Holding Pattern
	RW30	*1.9 NM to RW30	300°	301°
	1500*	2400	301°	121°
	1.9 NM	0.6 NM	2.8 NM	6 NM
	GP 3.00°		TCH 50	
CATEGORY	A	B	C	D
LPV DA	1011-3/4		355 (400-3/4)	
LNAV/VNAV DA	1140-1/8		484 (500-1/8)	
LNAV MDA	1280-1/2		624 (700-1/2)	
	1560-1/4		1780-3	
CIRCLING	904 (1000-1/4)		1124 (1200-3)	
	1600-1/4		1980-3	
	944 (1000-1/4)		1324 (1400-3)	

# RNAV (GPS) RWY 30

NC-1, 16 APR 2026 to 14 MAY 2026

NC-1, 16 APR 2026 to 14 MAY 2026