

| | | |
|-----------------------------------|------------------------|------------------------|
| LOC I- FDK 110.3 | APP CRS 229° | Rwy Ldg 5819 |
| | | TDZE 297 |
| | | Apt Elev 306 |

ILS or LOC RWY 23

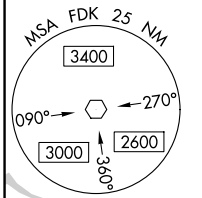
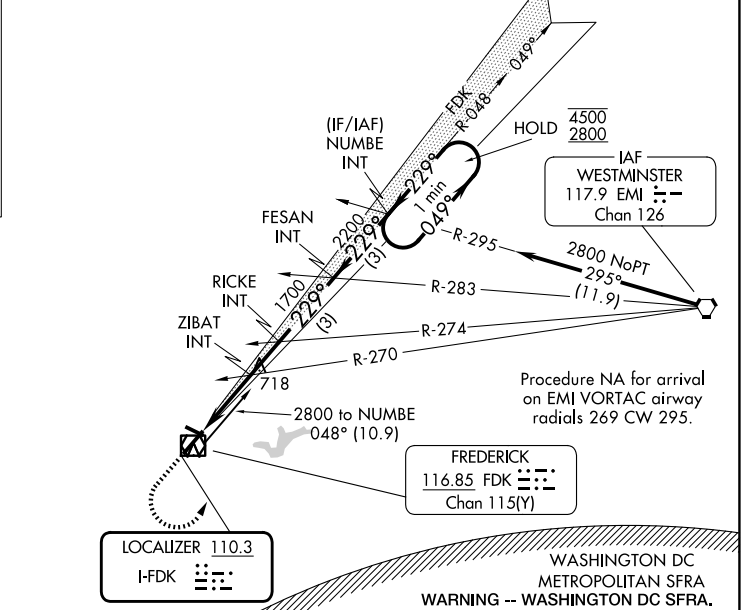
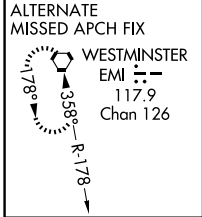
FREDERICK MUNI (F'DK)

⚠ Circling Rwy 30 NA at night. Rwy 23 helicopter visibility reduction below ¼ SM NA. For inop ALS, increase S-ILS 23 Cat A/B visibility to 1½ SM. For inop ALS, increase S-LOC 23 Cat C/D visibility to 2½ SM. ZIBAT fix minimums: Inop table does not apply to S-LOC 23 Cats C/D.

ODALS

MISSED APPROACH: Climb to 1300 then climbing left turn to 2800 on FDK VOR R-048 to NUMBE INT and hold.

| | | | | |
|------------------------|--|--|---------------------------|-------------------------|
| ATIS 124.875 | POTOMAC APP CON 126.1 338.25 | FREDERICK TOWER ★ 132.4 (CTAF) 0 | GND CON 127.425 | UNICOM 122.95 |
|------------------------|--|--|---------------------------|-------------------------|

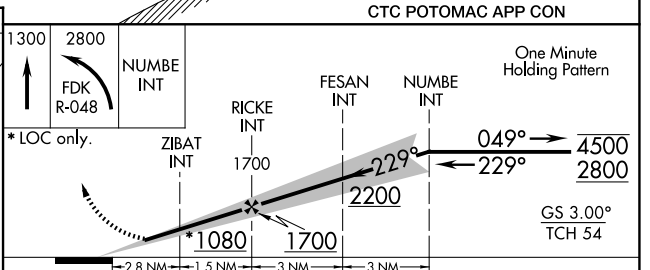


LOCALIZER 110.3
I-FDK

FREDERICK
116.85 FDK
Chan 115(Y)

WASHINGTON DC METROPOLITAN SFRA
WARNING -- WASHINGTON DC SFRA.
CTG POTOMAC APP CON

| | |
|---|--------------------------|
| ELEV 306 | TDZE 297 |
| | |
| REIL Rwy 5 REIL Rws 12, 23 and 30 HIRL Rwy 5-23 MIRL Rwy 12-30 | |
| FAF to MAP 4.3 NM | |
| Knots | 60 90 120 150 180 |
| Min:Sec | 4:18 2:52 2:09 1:43 1:26 |



| CATEGORY | A | B | C | D |
|---|-----------------------|-------------------------|-------------------------|-------------------------|
| S-ILS 23 | 689-1 392 (400-1) | | | |
| S-LOC 23 | 1080-¾ 783 (800-¾) | 1080-1 783 (800-1) | 1080-2 | 783 (800-2) |
| CIRCLING | 1080-1 774 (800-1) | 1080-1¼ 774 (800-1¼) | 1100-2½ 794 (800-2½) | 1140-2¾ 834 (900-2¾) |
| ZIBAT FIX MINIMUMS (DUAL VOR RECEIVERS REQUIRED) | | | | |
| S-LOC 23 | 1020-¾ 723 (800-¾) | 1020-2 | | 723 (800-2) |
| CIRCLING | 1020-1 | 714 (800-1) | 1100-2¼ 794 (800-2¼) | 1140-2¾ 834 (900-2¾) |

NE-3, 16 APR 2026 to 14 MAY 2026

NE-3, 16 APR 2026 to 14 MAY 2026