

# RNAV (GPS) RWY 5

FREDERICK MUNI (F'DK)

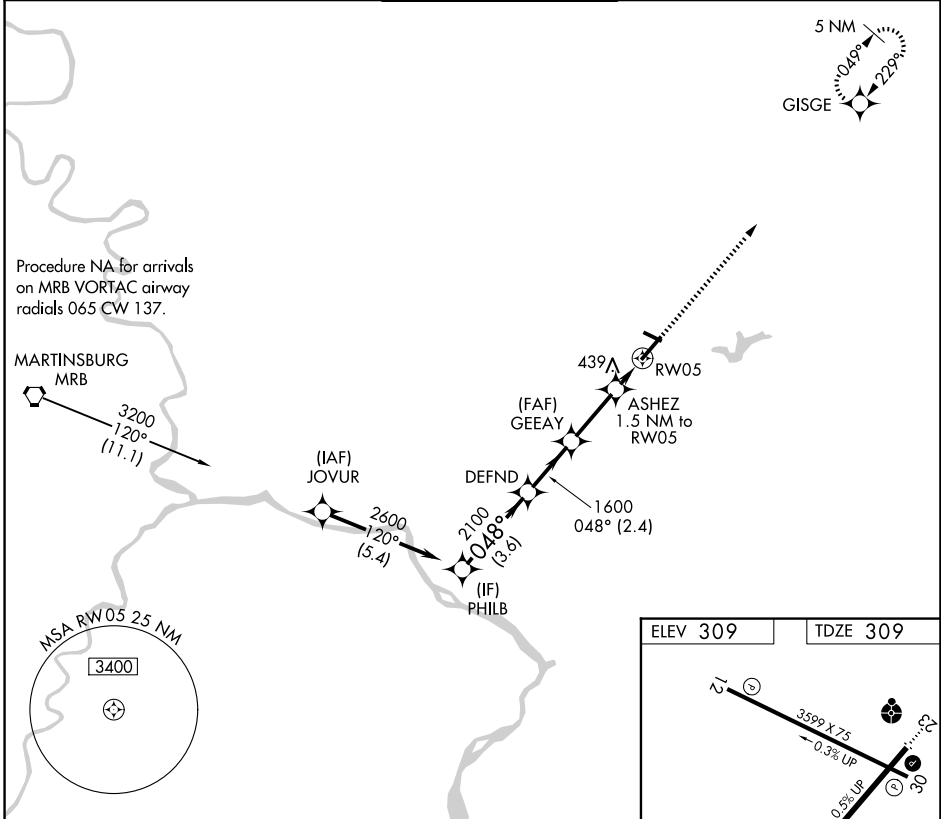
APP CRS	Rwy Ldg	<b>5819</b>
<b>048°</b>	TDZE	<b>309</b>
	Apt Elev	<b>309</b>

RNP APCH - GPS.

**▽**  
**▲** Rwy 5 helicopter visibility reduction below ¾ SM NA.

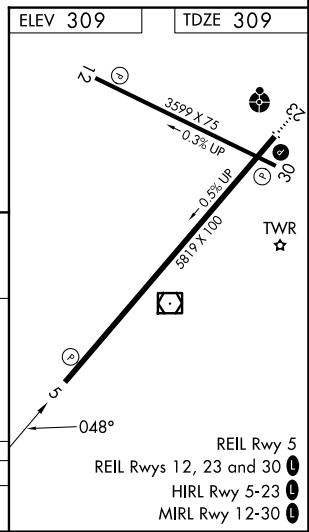
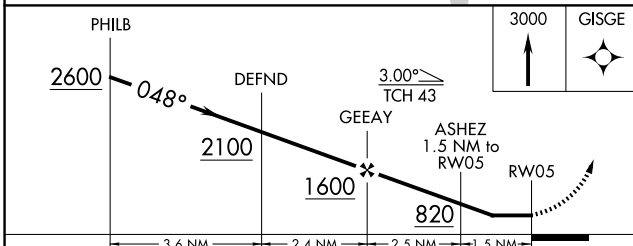
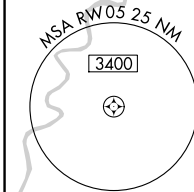
MISSED APPROACH: Climb to 3000 direct GISGE and hold, continue climb-in-hold to 3000.

ATIS <b>124,875</b>	POTOMAC APP CON <b>126.1 338.25</b>	FREDERICK TOWER ★ <b>132.4 (CTAF) 0</b>	GND CON <b>127,425</b>	UNICOM <b>122,95</b>
------------------------	----------------------------------------	--------------------------------------------	---------------------------	-------------------------



Procedure NA for arrivals on MRB VORTAC airway radials 065 CW 137.

MARTINSBURG MRB



CATEGORY	A	B	C	D
LNAV MDA	700-1	391 (400-1)	700-1½	391 (400-1½)

NE-3, 16 APR 2026 to 14 MAY 2026

NE-3, 16 APR 2026 to 14 MAY 2026