

RNAV (GPS) Y RWY 23

FREDERICK MUNI (FDK)

APP CRS	Rwy Ldg	5819
229°	TDZE	296
	Apt Elev	306

RNP APCH.

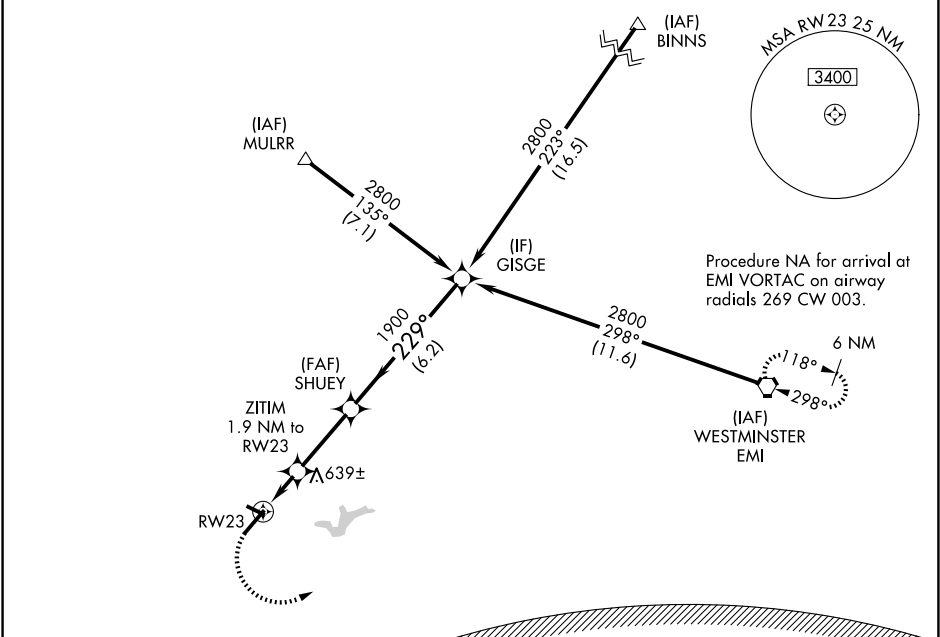
⚠ Inop table does not apply to Cat C. Rwy 23 helicopter visibility reduction below 3/4 SM NA. Circling Rwy 30 NA at night.

ODALS

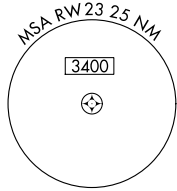


MISSED APPROACH: Climbing left turn to 3000 direct EMI VORTAC and hold.

ATIS 124.875	POTOMAC APP CON 126.1 338.25	FREDERICK TOWER ★ 132.4 (CTAF) 0	GND CON 127.425	UNICOM 122.95
------------------------	--	--	---------------------------	-------------------------

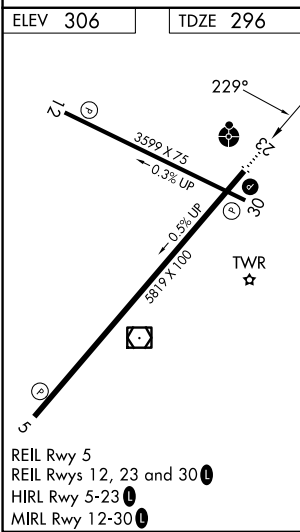


Procedure NA for arrival at EMI VORTAC on airway radials 269 CW 003.

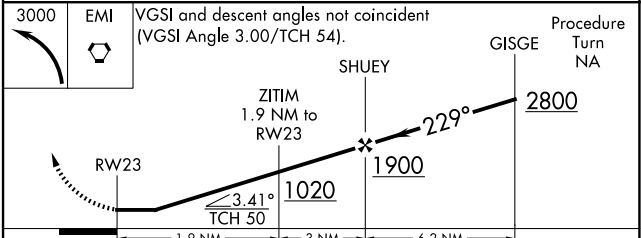


NE-3, 16 APR 2026 to 14 MAY 2026

NE-3, 16 APR 2026 to 14 MAY 2026



WASHINGTON DC METROPOLITAN SFRA
WARNING -- WASHINGTON DC SFRA. CTC POTOMAC APP CON



CATEGORY	A	B	C	D
LNAV MDA	820-3/4 524 (600-3/4)		820-1 1/2 524 (600-1 1/2)	820-1 3/4 524 (600-1 3/4)
CIRCLING	920-1 614 (700-1)		1100-2 1/4 794 (800-2 1/4)	1200-2 3/4 894 (900-2 3/4)