

TERPZ EIGHT DEPARTURE (RNAV)

FREDERICK, MARYLAND

POTOMAC DEP CON
 126.1 338.25
 ATIS
 124.875
 CLNC DEL
 127.425
 126.9 (When twr closed)
 GND CON
 127.425
 FREDERICK TOWER *
 132.4 (CTAF)
 UNICOM
 122.95

RNAV 1 - DME/DME/IRU or GPS.

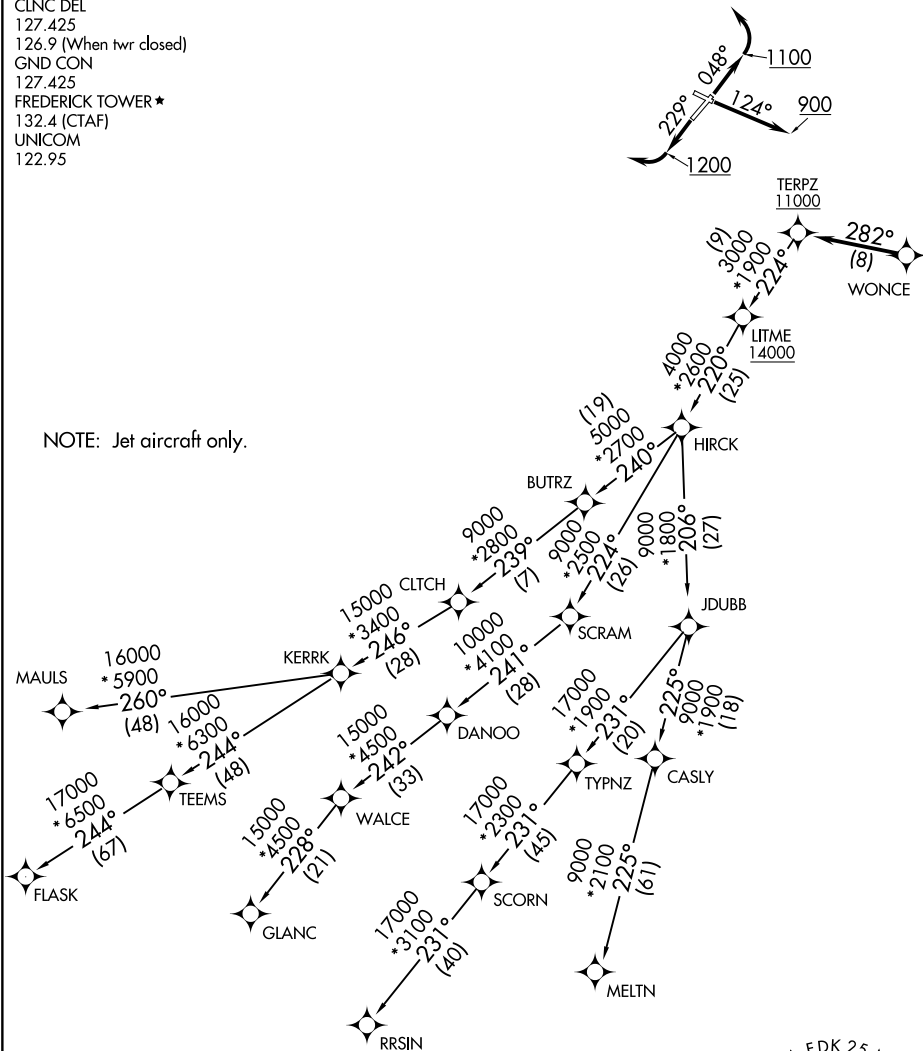
RADAR required.

TOP ALTITUDE:
17000

NE-3, 16 APR 2026 to 14 MAY 2026

NE-3, 16 APR 2026 to 14 MAY 2026

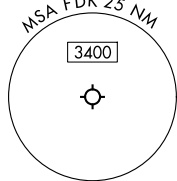
NOTE: Jet aircraft only.



TAKEOFF MINIMUMS:

- Rwy 5: 400-3 or Standard with minimum climb of 255'/NM to 600.
- Rwy 12: 500-2¾ or Standard with minimum climb of 410'/NM to 2400.
- Rwy 23: Standard.
- Rwy 30: Standard with minimum climb of 340'/NM to 2400.

NOTE: Chart not to scale.



TERPZ EIGHT DEPARTURE (RNAV)

(TERPZ8.TERPZ) 11JUL24

FREDERICK, MARYLAND
FREDERICK MUNI (F'DK)



DEPARTURE ROUTE DESCRIPTION

TAKEOFF RUNWAY 5: Climb on heading 048° to 1100 before turning left.

TAKEOFF RUNWAY 12: Climb on heading 124° to 900 before proceeding westbound.

TAKEOFF RUNWAY 23: Climb on heading 229° to 1200 before turning right.

Climb on assigned heading for RADAR vectors to WONCE, thence. . . .

. . . then on track 282° to cross TERPZ at or above 11000, then on assigned transition.

Maintain 17000, expect filed altitude 10 minutes after departure.

CLTCH TRANSITION (TERPZ8.CLTCH)

FLASK TRANSITION (TERPZ8.FLASK)

GLANC TRANSITION (TERPZ8.GLANC)

MAULS TRANSITION (TERPZ8.MAULS)

MELTN TRANSITION (TERPZ8.MELTN)

RRSIN TRANSITION (TERPZ8.RRSIN)

NE-3, 16 APR 2026 to 14 MAY 2026

NE-3, 16 APR 2026 to 14 MAY 2026