

LOC I-AUM <b>110.55</b>	APP CRS <b>351°</b>	Rwy Ldg TDZE Apt Elev	<b>5800</b> <b>1231</b> <b>1234</b>
----------------------------	------------------------	-----------------------------	---

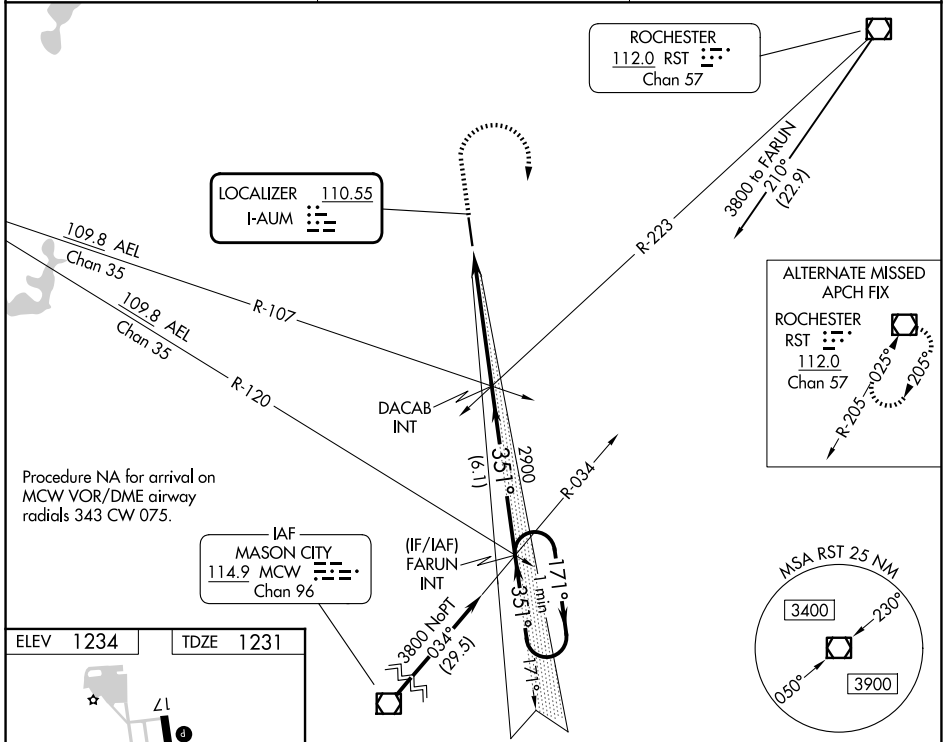
# ILS or LOC RWY 35

AUSTIN MUNI (AUM)

**NA** When local altimeter setting not received, use Albert Lea altimeter setting and increase all DA 48 feet and all MDA 60 feet; increase Circling Cat C/D visibility ¼ SM. For inoperative MALSRS, increase S-LOC 35 Cats C and D visibility to 1⅓ mile.

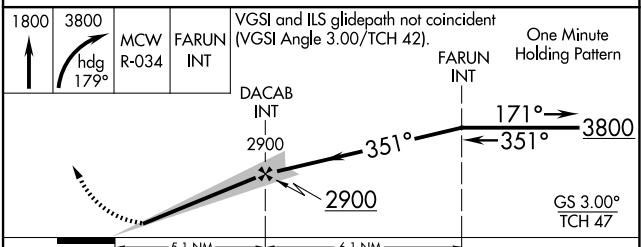
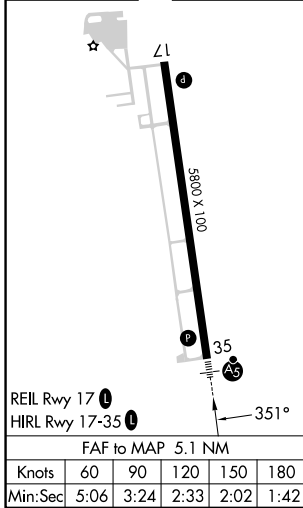
**MALSRS** MISSED APPROACH: Climb to 1800 then climbing right turn to 3800 on heading 179° and MCW VOR/DME R-034 to FARUN INT and hold.

AWOS-3PT <b>119.025</b>	ROCHESTER APP CON* <b>119.8 251.125</b>	UNICOM <b>122.7 (CTAF)</b>
----------------------------	--	-------------------------------



Procedure NA for arrival on MCW VOR/DME airway radials 343 CW 075.

ELEV 1234	TDZE 1231
-----------	-----------



CATEGORY	A	B	C	D
S-ILS 35	1431-½		200 (200-½)	
S-LOC 35	1700-½	469 (500-½)	1700-1	469 (500-1)
CIRCLING	1740-1	506 (600-1)	1800-1½ 566 (600-1½)	1880-2 646 (700-2)

NC-1, 16 APR 2026 to 14 MAY 2026

NC-1, 16 APR 2026 to 14 MAY 2026