

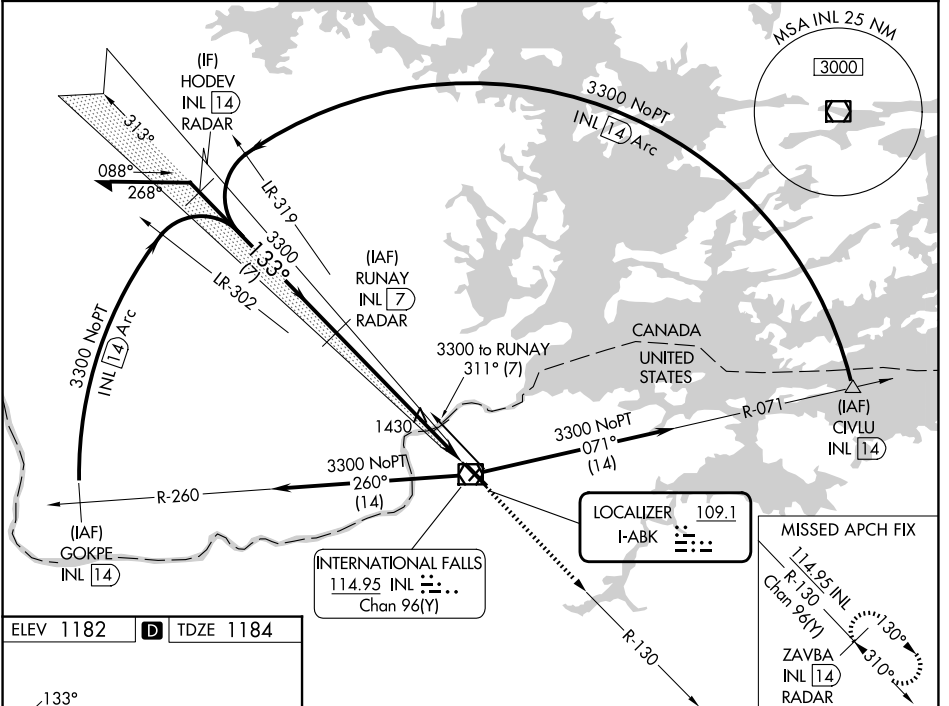
LOC I-ABK <b>109.1</b>	APP CRS <b>133°</b>	Rwy Ldg TDZE Apt Elev	<b>7400</b> <b>1184</b> <b>1182</b>
---------------------------	------------------------	-----------------------------	---

# ILS or LOC RWY 13

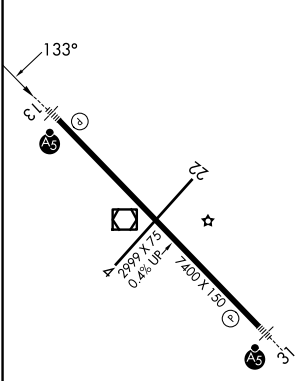
FALLS INTL/EINARSON FLD (INL)

DME or RADAR required.	MALSR 	MISSED APPROACH: Climb to 3400 on INL VOR/DME R-130 to ZAVBA/INL 14 DME/RADAR and hold.
Circling Rwy 4, 22 NA at night. Caution opposing ILS continuously on. DME from INL VOR/DME. DME use requires simultaneous reception of I-ABK and INL DME.		

ASOS <b>120.0</b>	MINNEAPOLIS CENTER <b>120.9 377.1</b>	UNICOM <b>122.8 (CTAF)</b>
----------------------	--	-------------------------------



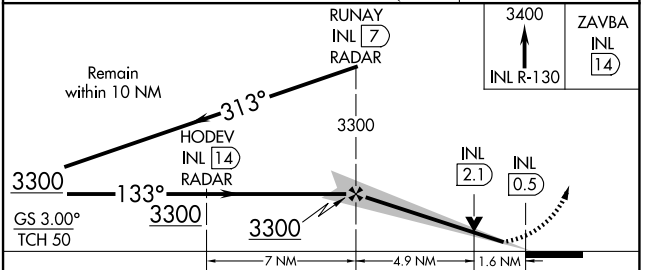
ELEV 1182	<b>D</b>	TDZE 1184
-----------	----------	-----------



HIRL Rwy 13-31

FAF to MAP 6.5 NM

Knots	60	90	120	150	180
Min:Sec	6:30	4:20	3:15	2:36	2:10



CATEGORY	A	B	C	D
S-ILS 13	1384-1/2 200 (200-1/2)			
S-LOC 13	1760-1/2	576 (600-1/2)	1760-1/4	576 (600-1/4)
CIRCLING	1760-1	578 (600-1)	1900-2 718 (800-2)	1900-2 1/4 718 (800-2 1/4)

NC-1, 16 APR 2026 to 14 MAY 2026

NC-1, 16 APR 2026 to 14 MAY 2026