


| | | |
|--|------------------------|---|
| WAAS CH 53706 W13A | APP CRS 133° | Rwy Ldg 7400 TDZE 1184 Apt Elev 1182 |
|--|------------------------|---|

RNAV (GPS) RWY 13

FALLS INTL/EINARSON FLD (INL)

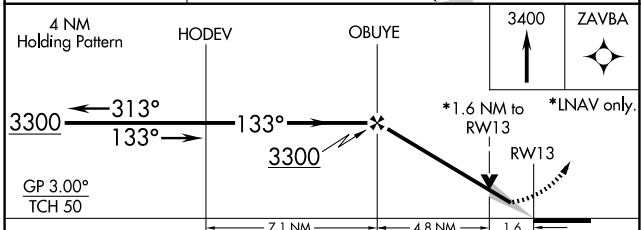
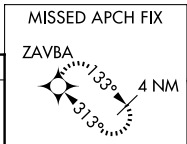
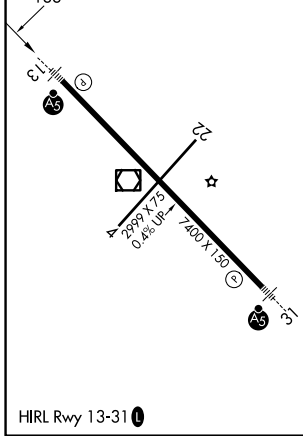
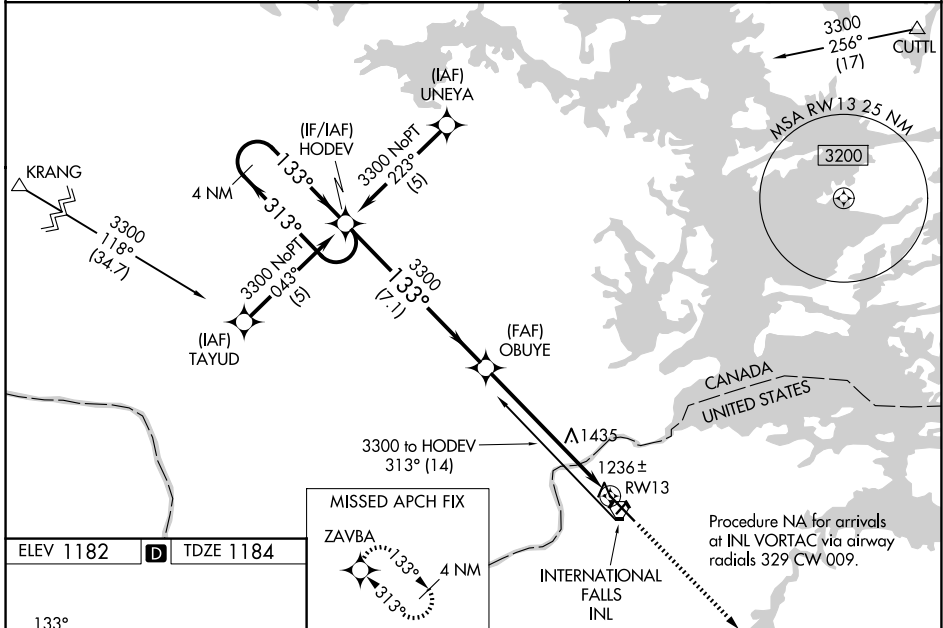
V When local altimeter setting not received, use Baudette altimeter setting: increase LPV DA to 1561 feet and visibility all Cats ¼ SM; increase LNAV/VNAV DA to 1796 feet and visibility all Cats ¾ SM; increase all MDAs 140 feet and visibility LNAV Cat C and D and Circling Cat C and D ½ SM. For inop MALS/R when using Baudette altimeter setting, increase LPV visibility ½ mile all Cats, inop table does not apply to LNAV/VNAV. VDP NA when using Baudette altimeter setting. Baro-VNAV NA when using Baudette altimeter setting. Circling to Rwy 4-22 NA at night. For uncompensated Baro-VNAV systems, LNAV/VNAV NA below -17°C (2°F) or above 47°C (116°F). DME/DME RNP-0.3 NA.

MALS/R



MISSED APPROACH:
Climb to 3400 direct ZAVBA and hold.

| | | |
|----------------------|--|-------------------------------|
| ASOS 120.0 | MINNEAPOLIS CENTER 120.9 377.1 | UNICOM 122.8 (CTAF) |
|----------------------|--|-------------------------------|



| CATEGORY | A | B | C | D |
|--------------|--------|-------------|-----------------------|-------------------------|
| LPV DA | | 1434-½ | 250 (300-½) | |
| LNAV/VNAV DA | | 1669-1¼ | 485 (500-1¼) | |
| LNAV MDA | 1760-½ | 576 (600-½) | 1760-1 576 (600-1) | 1760-1¼ 576 (600-1¼) |
| CIRCLING | 1760-1 | 578 (600-1) | 1900-2 718 (800-2) | 1900-2¼ 718 (800-2¼) |

NC-1, 16 APR 2026 to 14 MAY 2026

NC-1, 16 APR 2026 to 14 MAY 2026