

WAAS CH 78406 W31A	APP CRS 313°	Rwy Ldg 7400 TDZE 1166 Apt Elev 1182
---------------------------------	------------------------	---

RNAV (GPS) RWY 31

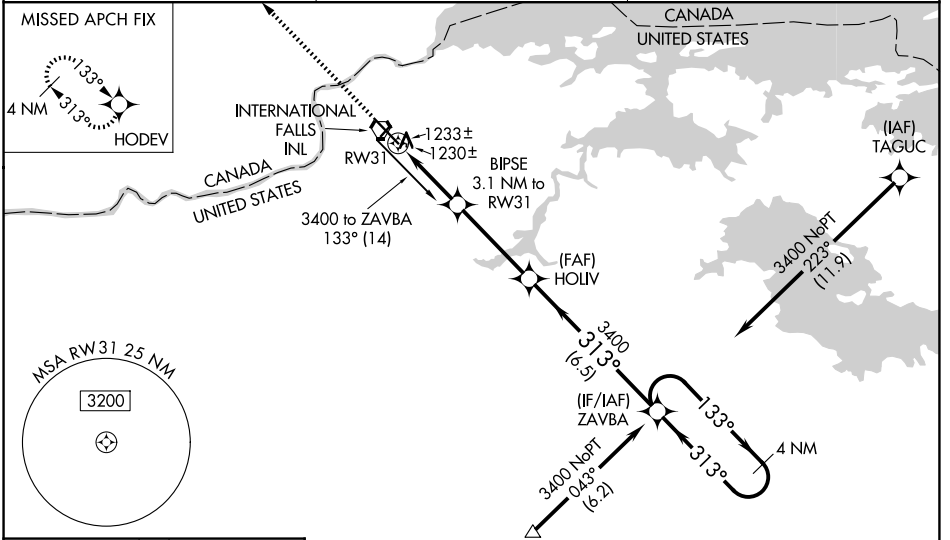
FALLS INTL/EINARSON FLD (INL)

⚠ When local altimeter setting not received, use Baudette altimeter setting: increase LPV DA to 1589 feet and visibility all Cats ½ SM; increase LNAV/VNAV DA to 1627 feet and visibility all Cats ½ SM; increase all MDAs 140 feet and visibility LNAV Cat C ¼ SM and Circling Cat C and D ½ SM. For inop MALSRS when using Baudette altimeter setting, increase LPV visibility ½ mile all Cats. For inop MALSRS, increase LPV visibility ½ mile all Cats, inop table does not apply to LNAV Cat D. VDP NA when using Baudette altimeter setting. Baro-VNAV NA when using Baudette altimeter setting. Circling to Rwy 4-22 NA at night. For uncompensated Baro-VNAV systems, LNAV/VNAV NA below -17°C (2°F) or above 47°C (116°F). DME/DME RNP-0.3 NA.

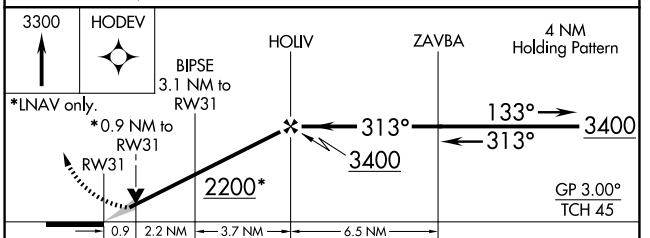
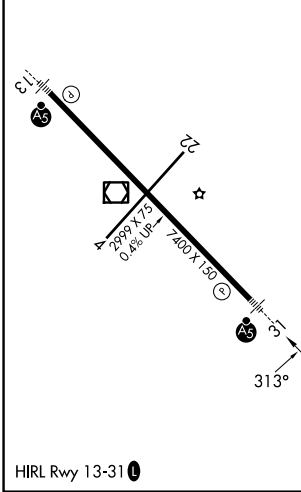
MALSRS

MISSED APPROACH:
Climb to 3300 direct HODEV and hold.

ASOS 120.0	MINNEAPOLIS CENTER 120.9 377.1	UNICOM 122.8 (CTAF)
----------------------	--	-------------------------------



ELEV 1182	D	TDZE 1166
-----------	----------	-----------



CATEGORY	A	B	C	D
LPV DA		1462-½	296 (300-½)	
LNAV/VNAV DA		1500-¾	334 (400-¾)	
LNAV MDA		1500-½	334 (400-½)	1500-1 334 (400-1)
CIRCLING	1620-1 438 (500-1)	1680-1 498 (500-1)	1900-2 718 (800-2)	1900-2½ 718 (800-2½)

NC-1, 16 APR 2026 to 14 MAY 2026

NC-1, 16 APR 2026 to 14 MAY 2026