


VOR TBN 110.0	APP CRS 138°	Rwy Ldg 5535 TDZE 1158 Apt Elev 1160
-------------------------	------------------------	--

VOR RWY 15

WAYNESVILLE-ST ROBERT RGNL FORNEY FLD (TBN)

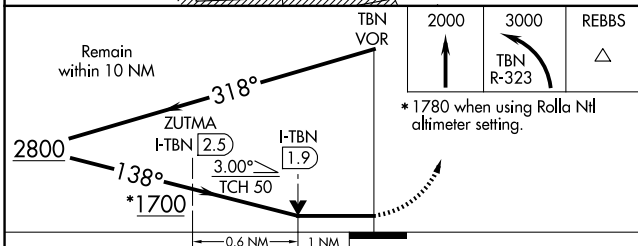
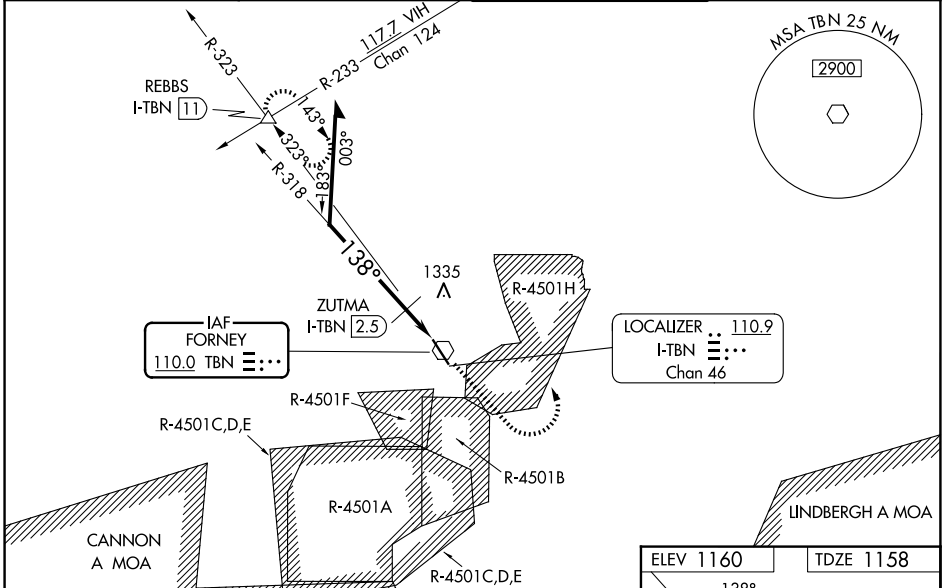
⚠ Procedure NA when R-4501B or R-4501H in use. Inop table does not apply to S-15 Cat A and B or to ZUTMA fix minimums. Circling NA west of Rwy 15-33. When local altimeter setting not received, use Rolla Ntl altimeter setting and increase all MDAs 80 feet and increase S-15 visibility Cats C/D ¼ SM and Circling Cat C visibility ½ SM. Inop table does not apply to Cats A/B when using Rolla Ntl altimeter setting. For inop ALS when using Rolla Ntl altimeter setting increase S-15 Cats C/D visibility to 1¼ SM. For inop ALS when using Rolla Ntl altimeter setting increase S-15 ZUTMA fix minimums Cats C/D visibility to 1½ SM. #DME from I-TBN LOC/DME.

MALSR

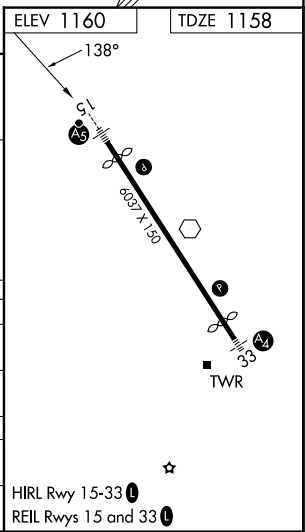


MISSED APPROACH: Climb to 2000 then climbing left turn to 3000 on TBN VOR R-323 to REBBS INT/I-TBN LOC/DME 11 DME and hold.

D-ATIS 118.7 229.4	KANSAS CITY CENTER 128.35 284.675	FORNEY TOWER ★ 125.4 (CTAF) 0 268.7	GND CON 123.75 256.8
------------------------------	---	---	--------------------------------



CATEGORY	A	B	C	D
S-15	1700-1	542 (600-1)	1700-1½	542 (600-1½)
CIRCLING	1700-1	540 (600-1)	1700-1½ 540 (600-1½)	1720-2 560 (600-2)
ZUTMA FIX MINIMUMS #				
S-15	1520-1		362 (400-1)	
CIRCLING	1580-1 420 (500-1)	1660-1 500 (500-1)	1660-1½ 500 (500-1½)	1720-2 560 (600-2)



NC-3, 16 APR 2026 to 14 MAY 2026

NC-3, 16 APR 2026 to 14 MAY 2026

VOR RWY 15