

WAAS CH <b>42510</b> <b>W10A</b>	APP CRS <b>098°</b>	Rwy Ldg TDZE Apt Elev	<b>3901</b> <b>906</b> <b>906</b>
--	------------------------	-----------------------------	---

# RNAV (GPS) RWY 10L

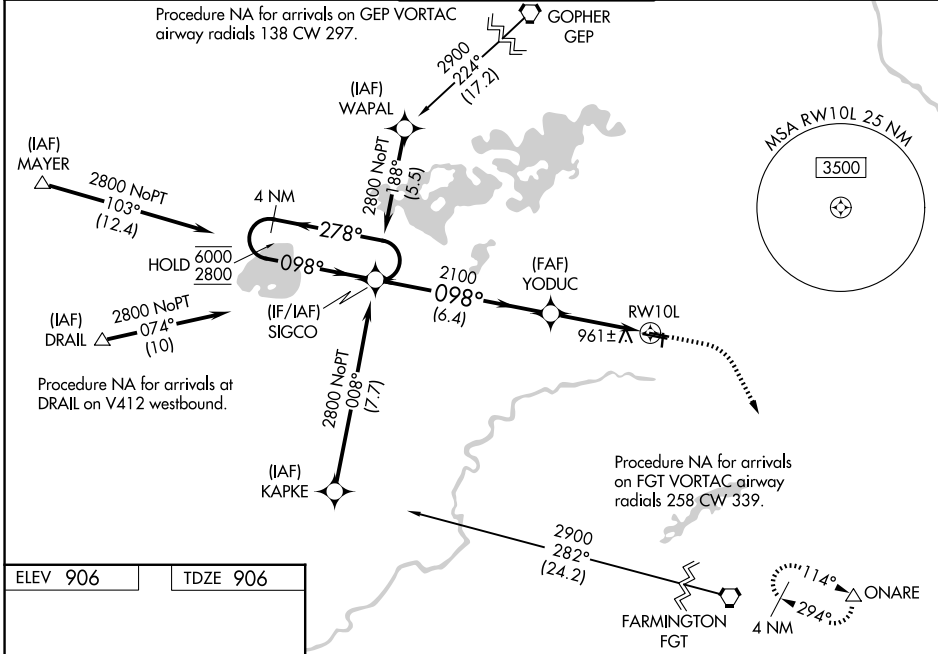
FLYING CLOUD (FCM)

RNP APCH.

**⚠** Baro-VNAV NA when using Minneapolis-St Paul Intl/Wold Chamberlain altimeter setting.  
**⚠** For uncompensated Baro-VNAV systems, LNAV-VNAV NA below -22°C (-7°F) or above 54°C (130°F). When local altimeter setting not received, use Minneapolis-St Paul Intl/Wold Chamberlain altimeter setting and increase all DA 34 feet and all MDA 40 feet; increase LNAV/VNAV visibility 1/8 mile all Cats, and Circling Cat D 1/4 mile. When Circling to Rwy 18, 36 at night, operational VGSi required, remain on or above VGSi glidepath until threshold.

**MISSED APPROACH:** Climb to 1400 then climbing right turn to 2900 direct ONARE and hold.

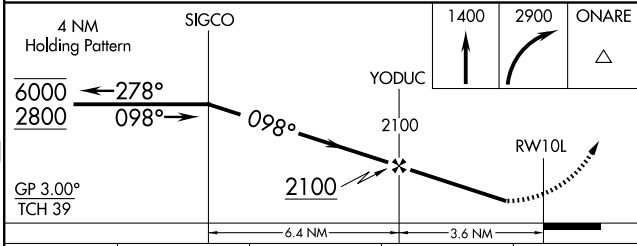
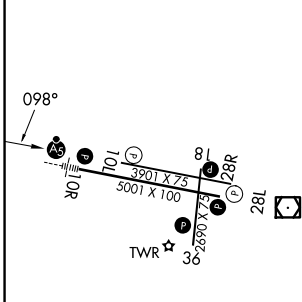
ATIS <b>124.9</b>	MINNEAPOLIS APP CON <b>134.7 284.7</b>	FLYING CLOUD TOWER* <b>119.15 (CTAF) 0</b>	GND CON <b>121.7</b>	UNICOM <b>122.95</b>
----------------------	---	---	-------------------------	-------------------------



NC-1, 16 APR 2026 to 14 MAY 2026

NC-1, 16 APR 2026 to 14 MAY 2026

ELEV 906	TDZE 906
----------	----------



CATEGORY	A	B	C	D
LPV DA		1187-1	281 (300-1)	
LNAV/VNAV DA		1230-1 1/8	324 (400-1 1/8)	
LNAV MDA		1240-1	334 (400-1)	
CIRCLING	1320-1	1440-1	1440-1 1/2	1540-2
	414 (500-1)	534 (600-1)	534 (600-1 1/2)	634 (700-2)

- HIRL Rwy 10R-28L **0**
- REIL Rws 10L and 28R
- REIL Rws 18, 28L, and 36 **0**
- MIRL Rwy 10L-28R
- MIRL Rwy 18-36 **0**