

VOR/DME FCM 117.7 Chan 124	APP CRS 035°	Rwy Ldg TDZE Apt Elev	2690 905 906
--	------------------------	-----------------------------	---

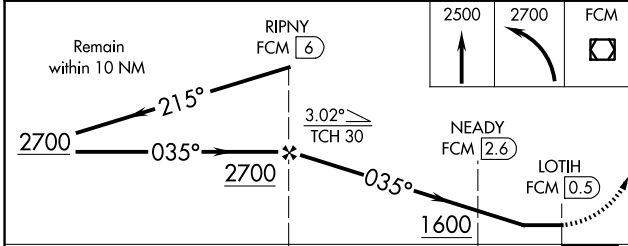
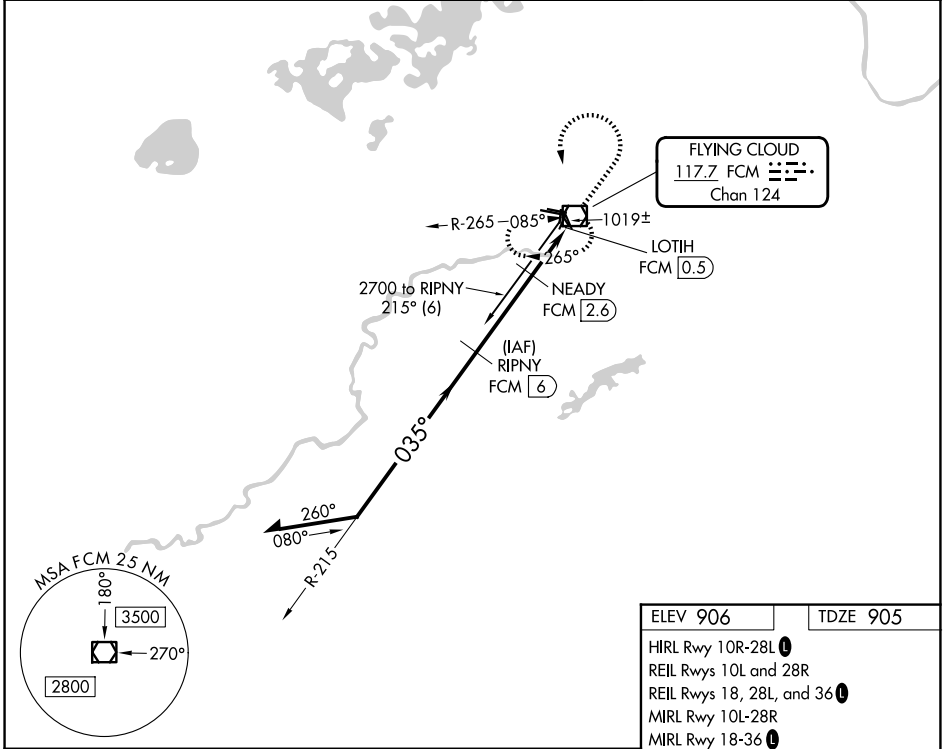
VOR/DME RWY 36

FLYING CLOUD (FCM)

⚠ When local altimeter setting not received, use Minneapolis St Paul Intl/Wold Chamberlain altimeter setting and increase all MDA 40 feet and S-36 Cat C visibility 1/8 mile. Helicopter visibility reduction below 1 SM NA. Straight-in Rwy 36 at night, and Circling Rwy 18, 36 at night, operational VGSi required, remain on or above VGSi glidepath until threshold.

MISSED APPROACH: Climb to 2500 then climbing left turn to 2700 direct FCM VOR/DME and hold.

ATIS 124.9	MINNEAPOLIS APP CON 134.7 284.7	FLYING CLOUD TOWER ★ 119.15 (CTAF) 0	GND CON 121.7	UNICOM 122.95
----------------------	---	--	-------------------------	-------------------------



ELEV 906	TDZE 905
----------	----------

HIRL Rwy 10R-28L
REIL Rwy 10L and 28R
REIL Rwy 18, 28L, and 36
MIRL Rwy 10L-28R
MIRL Rwy 18-36

CATEGORY	A	B	C	D
S-36	1280-1	375 (400-1)		NA
CIRCLING	1320-1 414 (500-1)	1440-1 534 (600-1)	1440-1½ 534 (600-1½)	NA

NC-1, 16 APR 2026 to 14 MAY 2026

NC-1, 16 APR 2026 to 14 MAY 2026