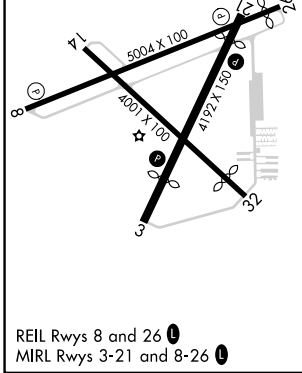
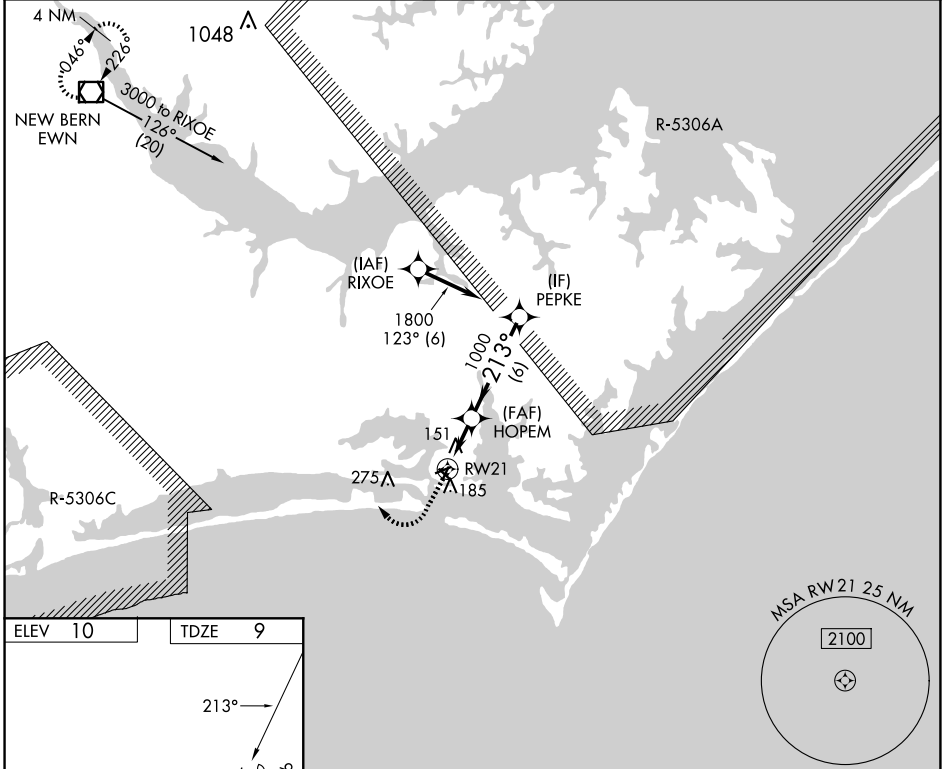


APP CRS	Rwy Idg	<b>3676</b>
<b>213°</b>	TDZE	<b>9</b>
	Apt Elev	<b>10</b>

# RNAV (GPS) RWY 21

MICHAEL J SMITH FLD (MR.H)

RNP APCH - GPS.			MISSED APPROACH: Climb to 500 then climbing right turn to 3000 direct EWN VOR/DME and hold.
ASOS <b>135,375</b>	CHERRY POINT APP CON <b>132,575 299.6</b>	CLNC DEL <b>125,65</b>	UNICOM <b>122.8 (CTAF) 0</b>



500	3000	EWN	VGSI and descent angles not coincident (VGSI Angle 4.00/TCH 54).	
HOPEM		PEPKE	1800	
RWY 21		1000		
0.8		2.2 NM	6 NM	
CATEGORY	A	B	C	D
LNAV MDA	420-1	411 (500-1)		NA
CIRCLING	540-1	530 (600-1)		NA

SE-2, 16 APR 2026 to 14 MAY 2026

SE-2, 16 APR 2026 to 14 MAY 2026