

WAAS CH 40338 W26A	APP CRS 256°	Rwy Idg TDZE Apt Elev	4715 8 10
--	------------------------	-----------------------------	--------------------------------------

RNAV (GPS) RWY 26

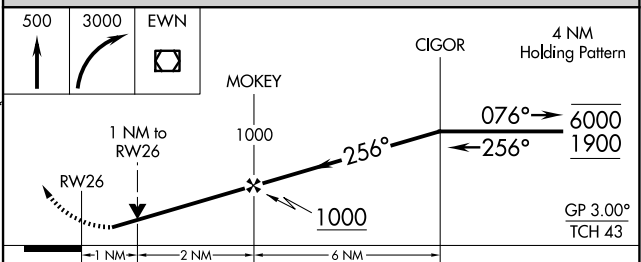
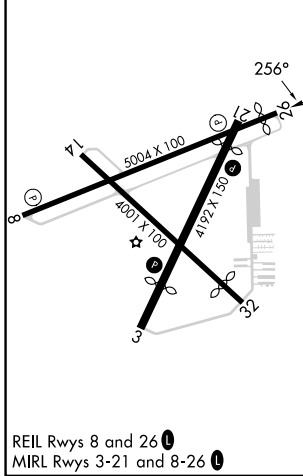
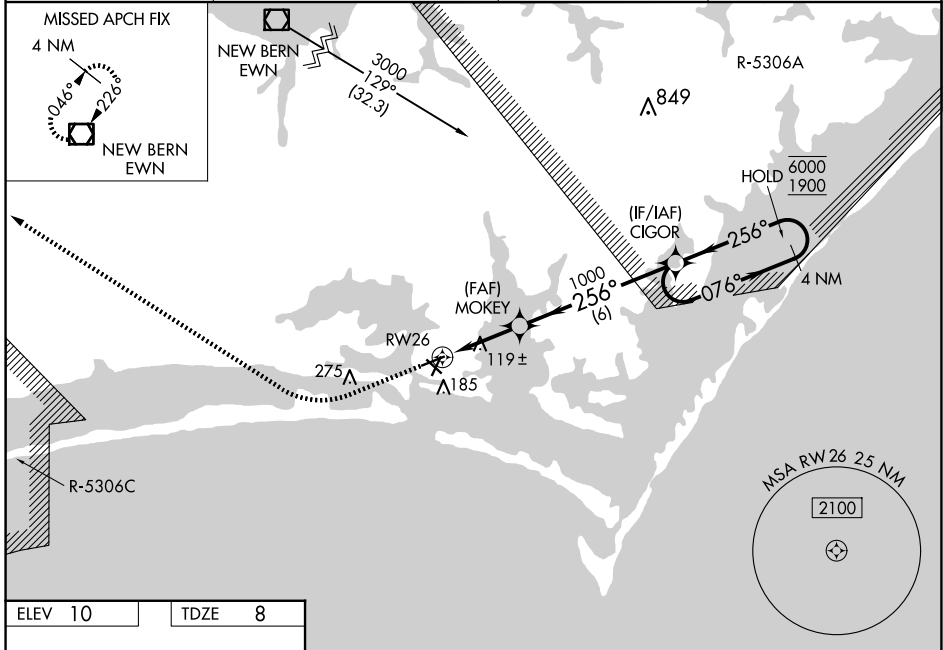
MICHAEL J SMITH FLD (MRH)

RNP APCH - GPS.

⚠ Circling Rwy 8, 14, 32 NA at night. Rwy 26 helicopter visibility reduction below $\frac{3}{4}$ SM NA. For uncompensated Baro-VNAV systems, LNAV/VNAV NA below -5°C or above 54°C. ATC clearance required to penetrate R-5306A and R-5306C.

MISSED APPROACH: Climb to 500 then climbing right turn to 3000 direct EWN VOR/DME and hold.

ASOS 135.375	CHERRY POINT APP CON 132.575 299.6	CLNC DEL 125.65	UNICOM 122.8 (CTAF)
------------------------	--	---------------------------	-------------------------------



CATEGORY	A	B	C	D
LPV DA		266- $\frac{3}{4}$	258 (300- $\frac{3}{4}$)	
LNAV/VNAV DA		394-1 $\frac{1}{8}$	386 (400-1 $\frac{1}{8}$)	
LNAV MDA		380-1	372 (400-1)	
C CIRCLING	540-1	530 (600-1)	580-1 $\frac{1}{2}$ 570 (600-1 $\frac{1}{2}$)	580-2 570 (600-2)

SE-2, 16 APR 2026 to 14 MAY 2026

SE-2, 16 APR 2026 to 14 MAY 2026