

WAAS CH <b>69227</b> <b>W32A</b>	APP CRS <b>321°</b>	Rwy Idg TDZE Apt Elev	<b>3511</b> <b>10</b> <b>10</b>
--	------------------------	-----------------------------	---------------------------------------

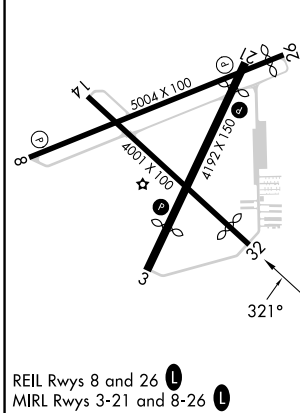
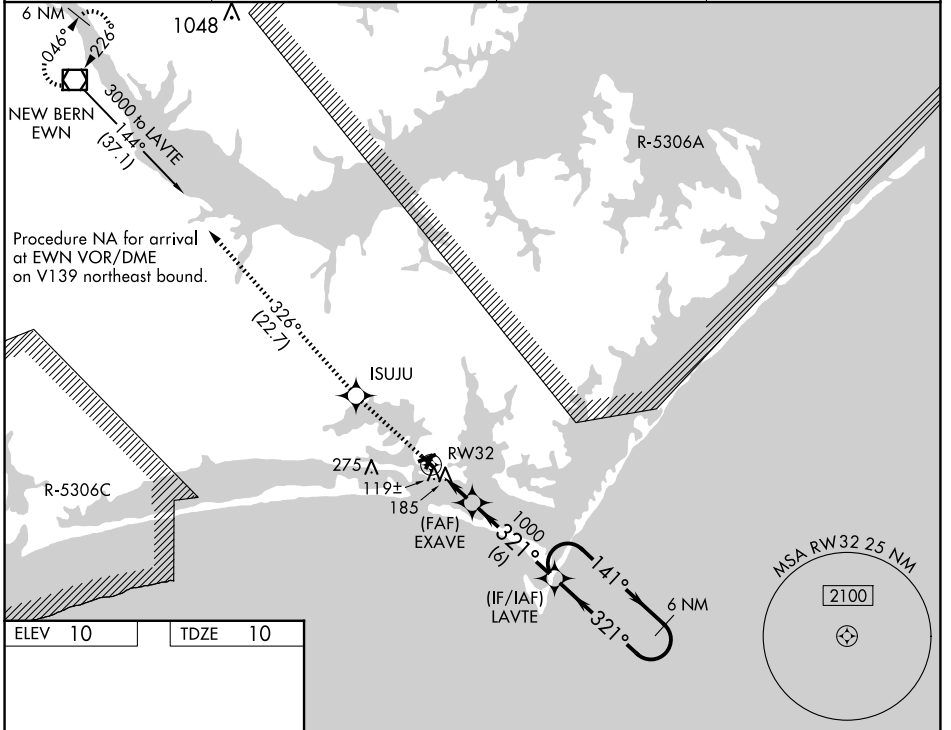
# RNAV (GPS) RWY 32

MICHAEL J SMITH FLD (MRH)

**⚠** DME/DME RNP-0.3 NA. ATC clearance required to penetrate R-5306A and R-5306C. When local altimeter setting not received, use Cherry Point MCAS (Cunningham Fld) altimeter setting and increase all MDA 40 feet; increase LP Cats C and D visibility 1/8 mile. Straight-in Rwy 32 NA at night, Circling Rwy 8, 14, 32 NA at night. Rwy 8, 14, 32 helicopter visibility reduction below 1 SM NA.

**⚠** MISSED APPROACH: Climb to 3000 direct ISUJU and on track 326° to EWN VOR/DME and hold.

ASOS <b>135.375</b>	CHERRY POINT APP CON <b>132.575 299.6</b>	CLNC DEL <b>125.65</b>	UNICOM <b>122.8 (CTAF) 0</b>
------------------------	--	---------------------------	---------------------------------



3000	ISUJU	tr 326°	EWN	LAVTE	6 NM Holding Pattern
RWY 32		EXAVE	1000	141°	2300
3 NM		6 NM			
CATEGORY	A	B	C	D	
LP MDA	380-1 370 (400-1)				
LNAV MDA	460-1	450 (500-1)	460-1 3/8	450 (500-1 3/8)	
CIRCLING	540-1	530 (600-1)	580-1 1/2	580-2 570 (600-1 1/2) 570 (600-2)	

SE-2, 16 APR 2026 to 14 MAY 2026

SE-2, 16 APR 2026 to 14 MAY 2026