

WAAS CH <b>97727</b> <b>W08A</b>	APP CRS <b>076°</b>	Rwy Idg TDZE Apt Elev	<b>5004</b> <b>8</b> <b>10</b>
--	------------------------	-----------------------------	--------------------------------------

# RNAV (GPS) RWY 8

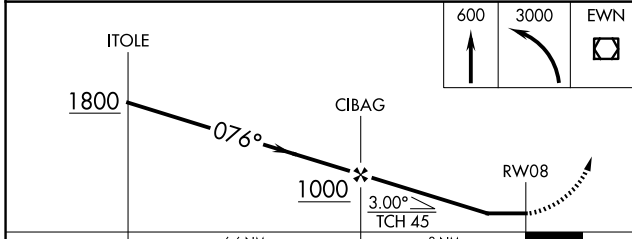
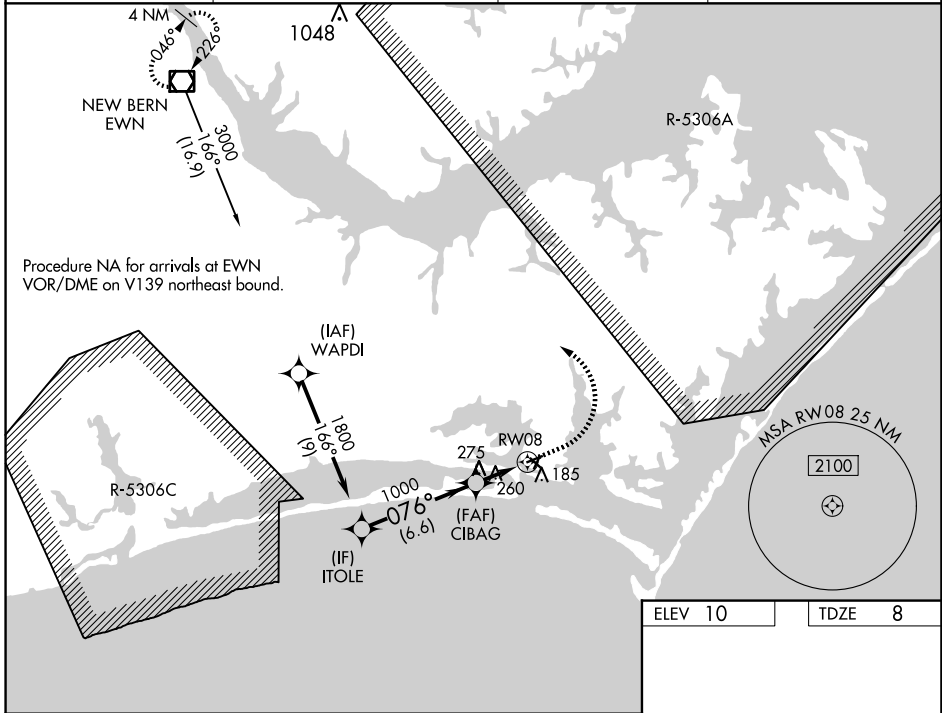
MICHAEL J SMITH FLD (MR.H)

**RNP APCH.**

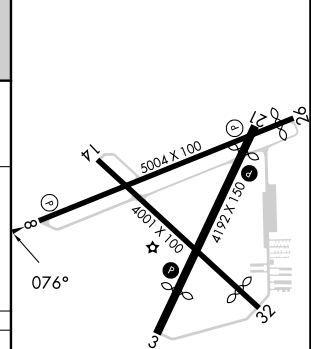
**⚠** ATC clearance required to penetrate R-5306A and R-5306C.  
**⚠** Rwy 8, helicopter visibility reduction below 1 SM NA.  
 Straight-in Rwy 8 NA at night, Circling Rwy 8, 14, 32 NA at night.

**MISSED APPROACH:** Climb to 600 then climbing left turn to 3000 direct EWN VOR/DME and hold.

ASOS <b>135.375</b>	CHERRY POINT APP CON <b>132.575 299.6</b>	CLNC DEL <b>125.65</b>	UNICOM <b>122.8 (CTAF) 0</b>
------------------------	--	---------------------------	---------------------------------



ELEV 10	TDZE 8
---------	--------



CATEGORY	A	B	C	D
LP MDA	520-1	512 (600-1)	520-1 <sup>3</sup> / <sub>8</sub>	512 (600-1 <sup>3</sup> / <sub>8</sub> )
LNAV MDA	540-1	532 (600-1)	540-1 <sup>1</sup> / <sub>2</sub>	532 (600-1 <sup>1</sup> / <sub>2</sub> )
<b>C</b> CIRCLING	540-1	530 (600-1)	580-1 <sup>1</sup> / <sub>2</sub> 570 (600-1 <sup>1</sup> / <sub>2</sub> )	620-2 610 (700-2)

REIL Rwy 8 and 26 **0**  
 MIRL Rwy 3-21 and 8-26 **0**

SE-2, 16 APR 2026 to 14 MAY 2026

SE-2, 16 APR 2026 to 14 MAY 2026