

WAAS CH <b>72723</b> <b>W10A</b>	APP CRS <b>103°</b>	Rwy Idg TDZE <b>5402</b> <b>547</b>	Apt Elev <b>547</b>
--	------------------------	---	------------------------

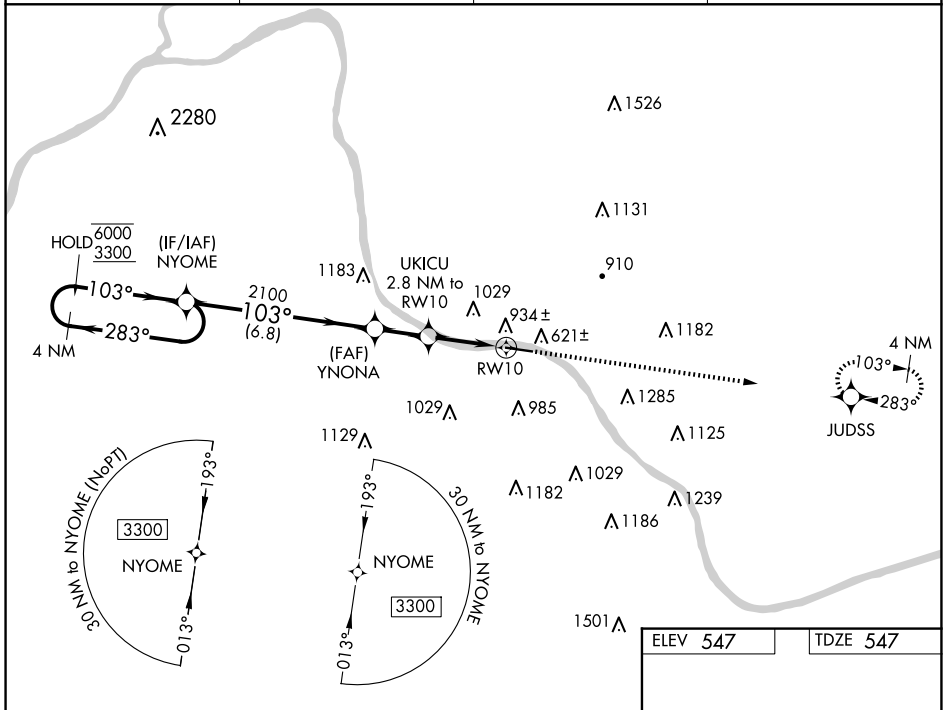
# RNAV (GPS) RWY 10

ASHLAND RGNL (DWU)

RNP APCH.  
 ▼ Rwy 10 helicopter visibility reduction below 3/4 SM NA. For uncompensated Baro-VNAV systems, LNAV/VNAV NA below -16°C or above 54°C.

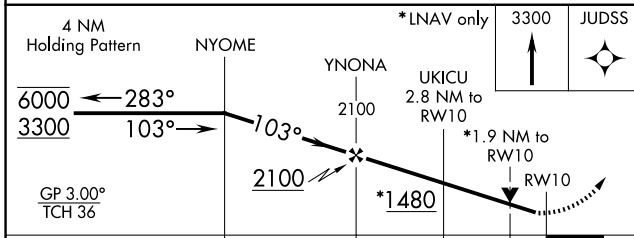
MISSED APPROACH: Climb to 3300 direct JUDSS and hold, continue climb-in-hold to 3300.

AWOS-3PT <b>132.425</b>	HUNTINGTON APP CON <b>128.4 270.1</b>	CLNC DEL <b>121.7</b>	UNICOM <b>122.8 (CTAF)</b>
----------------------------	--	--------------------------	-------------------------------



SE-1, 16 APR 2026 to 14 MAY 2026

SE-1, 16 APR 2026 to 14 MAY 2026



ELEV 547	TDZE 547
----------	----------

CATEGORY	A	B	C	D
LPV DA		799-1	252 (300-1)	
LNAV/VNAV DA		1095-1 5/8	548 (600-1 5/8)	
LNAV MDA	1200-1	653 (700-1)	1200-1 7/8	653 (700-1 5/8)
CIRCLING	1300-1 753 (800-1)	1380-1 1/4 833 (900-1 1/4)	1380-2 1/2 833 (900-2 1/2)	1420-2 3/4 873 (900-2 3/4)

