

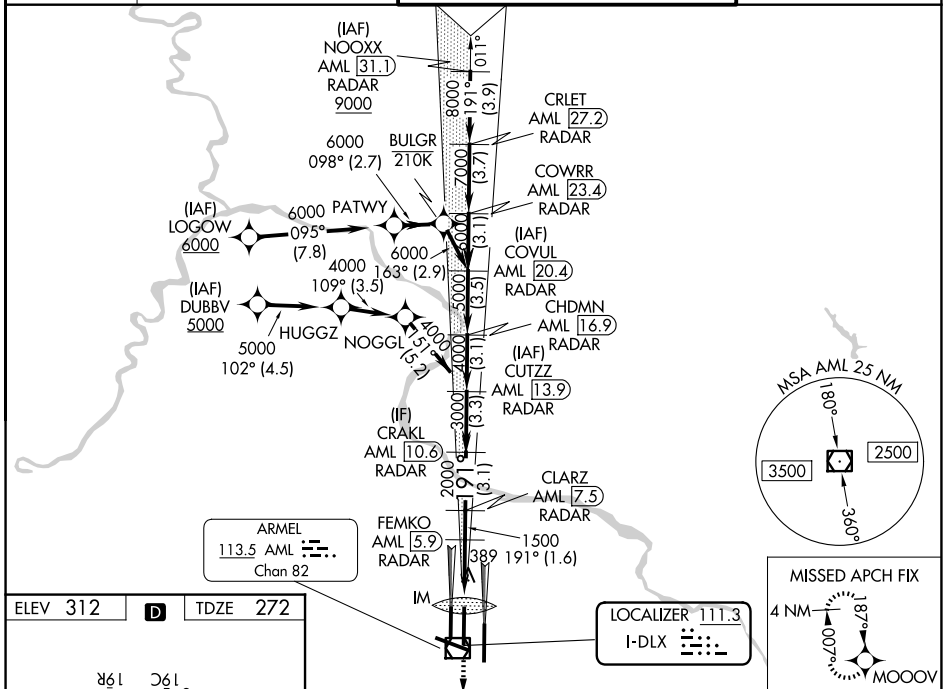
LOC I-DLX <b>111.3</b>	APP CRS <b>191°</b>	Rwy Ldg <b>11089</b> TDZE <b>272</b> Apt Elev <b>312</b>
---------------------------	------------------------	--

# ILS RWY 19C (CAT II & III)

WASHINGTON DULLES INTL (IAD)

RNP APCH - GPS. RADAR required for procedure entry at NOOXX. DME or RADAR required.		ALSF-2 	MISSED APPROACH: Climb to 3000 direct MOOOV and hold.
Simultaneous approach authorized. DME from AML VOR/DME. DME use requires simultaneous reception of I-DLX and AML DME.			

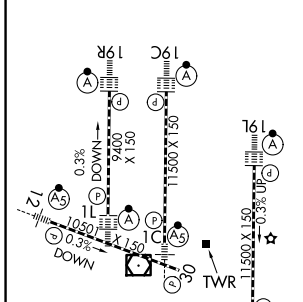
D-ATIS <b>134.85</b>	POTOMAC APP CON <b>120.45 306.925</b> (241°-330°) <b>128.525 306.925</b> (091°-240°) <b>126.1 338.25</b> (331°-090°)	DULLES TOWER <b>120.1 317.8</b> (Rwys 1R/19L) <b>120.25 348.6</b> (Rwys 1C/19C) <b>134.425 348.6</b> (Rwys 1L/19R and 12/30)	GND CON <b>121.9 317.8</b> (EAST) <b>121.625 348.6</b> (WEST)
-------------------------	---	---	---



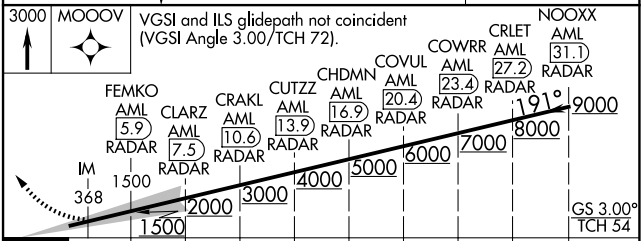
NE-3, 16 APR 2026 to 14 MAY 2026

NE-3, 16 APR 2026 to 14 MAY 2026

ELEV 312	<b>D</b>	TDZE 272
----------	----------	----------



TDZL/RCLS Rwys 1C, 1L, 1R, 12, 19C and 19R  
REIL Rwy 30  
HIRL all rwys



3000 MOOOV	VGSi and ILS glidepath not coincident (VGSi Angle 3.00/TCH 72).				NOOXX AML 31.1 RADAR	
FEMKO AML 5.9 RADAR	CLARZ AML 7.5 RADAR	CRALZ AML 10.6 RADAR	CUTZZ AML 13.9 RADAR	CHDMN AML 16.9 RADAR	COVUL AML 20.4 RADAR	
IM 1500	1500	2000	3000	4000	5000	
1.6 NM	3.1 NM	3.3 NM	3.1 NM	3.5 NM	3.1 NM	
3.7 NM	3.1 NM	3.3 NM	3.1 NM	3.5 NM	3.7 NM	
3.9 NM					3.9 NM	
CATEGORY A	B				C	D
S-ILS 19C	CAT II RA 110/12 100 DA 372					
S-ILS 19C	CAT IIIa RVR 07					
S-ILS 19C	CAT IIIb RVR 06					
S-ILS 19C	CAT IIIc NA					

## CATEGORY II & III ILS - SPECIAL AIRCREW & AIRCRAFT CERTIFICATION REQUIRED