

LOC/DME I-SGC	APP CRS	Rwy Ldg	11500
110.1	191°	TDZE	302
Chan 38		Apt Elev	312

ILS RWY 19L (SA CAT II)

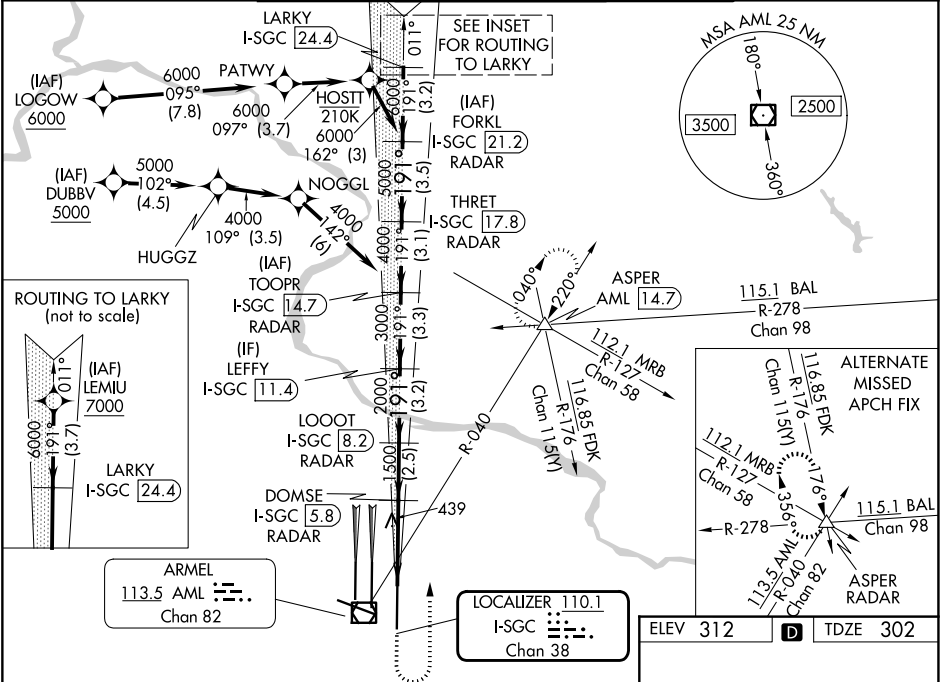
WASHINGTON DULLES INTL (IAD)

RNP APCH - GPS. From LOGOW, or DUBBV, or LEMIU.
 DME or RADAR required. RADAR required for procedure entry at LEMIU.
 Simultaneous approach authorized.
 Requires specific OPSPEC, MSPEC, or LOA approval.



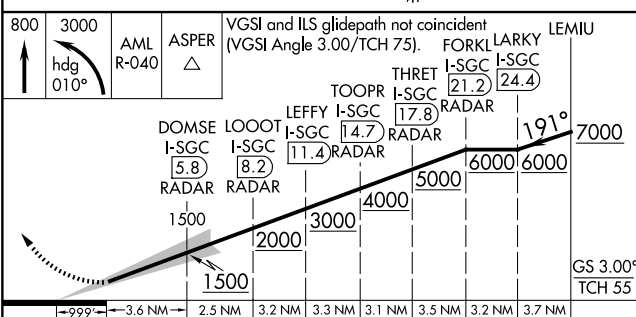
MISSED APPROACH: Climb to 800 then climbing left turn to 3000 on heading 010° and on AML VOR/DME R-040 to ASPER INT/AML 14.7 DME and hold.

D-ATIS	POTOMAC APP CON	DULLES TOWER	GND CON
134.85	120.45 306.925 (241°-330°) 128.525 306.925 (091°-240°) 126.1 338.25 (331°-090°)	120.1 317.8 (Rwy 1R/19L) 120.25 348.6 (Rwy 1C/19C) 134.425 348.6 (Rwys 1L/19R and 12/30)	121.9 317.8 (EAST) 121.625 348.6 (WEST)

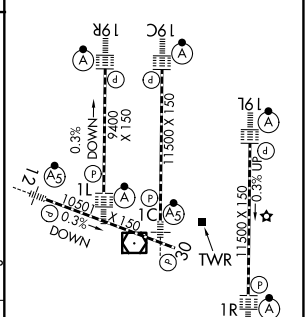


NE-3, 16 APR 2026 to 14 MAY 2026

NE-3, 16 APR 2026 to 14 MAY 2026



ELEV 312	TDZE 302
----------	----------



CATEGORY	A	B	C	D
S-ILS 19L	RA 100/12 100 DA 402			

SA CATEGORY II ILS - SPECIAL AIRCREW & AIRCRAFT CERTIFICATION REQUIRED

TDZL/RCLS Rwys 1C, 1L, 1R, 12, 19C and 19R
 REIL Rwy 30
 HIRL all rwys