

LOC/DME I-HSU 110.75 Chan 44 (Y)	APP CRS 191°	Rwy Ldg TDZE Apt Elev	9400 278 312
--	------------------------	-----------------------------	---

ILS RWY 19R (CAT II & III)

WASHINGTON DULLES INTL (IAD)

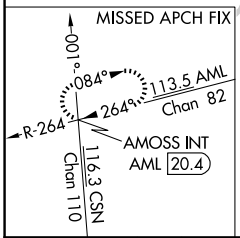
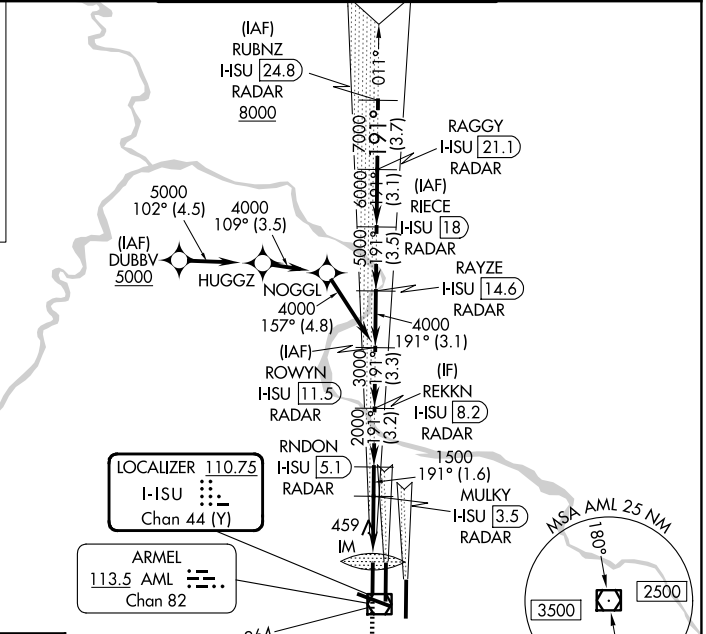
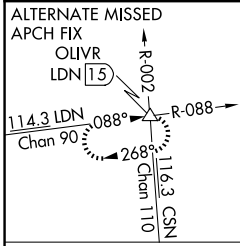
RNP APCH-GPS. From DUBBY.
DME or RADAR required. RADAR required for procedure entry at RUBNZ.

ALSF-2
A MISSED APPROACH: Climb to 800 then climbing right turn to 3000 on heading 280° and AML VOR/DME R-264 to AMOSS INT/AML 20.4 DME and hold.

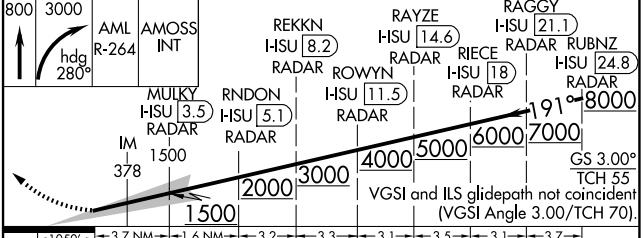
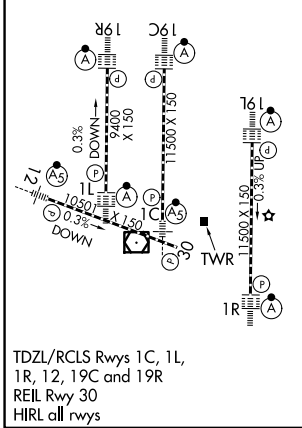
D-ATIS 134.85	POTOMAC APP CON 120.45 306.925 (241°-330°) 128.525 306.925 (091°-240°) 126.1 338.25 (331°-090°)
-------------------------	---

DULLES TOWER	
120.1 317.8 (Rwy 1R/19L)	
120.25 348.6 (Rwy 1C/19C)	
134.425 348.6 (Rwys 1L/19R and 12/30)	

GND CON	
121.9 317.8 (EAST)	
121.625 348.6 (WEST)	



ELEV 312	D	TDZE 278
-----------------	----------	-----------------



CATEGORY	A	B	C	D
S-ILS 19R	CAT II RA 102/12 100 DA 378			
S-ILS 19R	CAT IIIa RVR 07			
S-ILS 19R	CAT IIIb RVR 06			
S-ILS 19R	CAT IIIc NA			

CATEGORY II & III ILS - SPECIAL AIRCREW & AIRCRAFT CERTIFICATION REQUIRED

NE-3, 16 APR 2026 to 14 MAY 2026

NE-3, 16 APR 2026 to 14 MAY 2026