

LOC I-OSZ 111.3	APP CRS 011°	Rwy Ldg 11500
		TDZE 286
		Apt Elev 312

ILS RWY 1C (SA CAT II)

WASHINGTON DULLES INTL (IAD)

RNP APCH-GPS. From HELMZ or HUFFF.

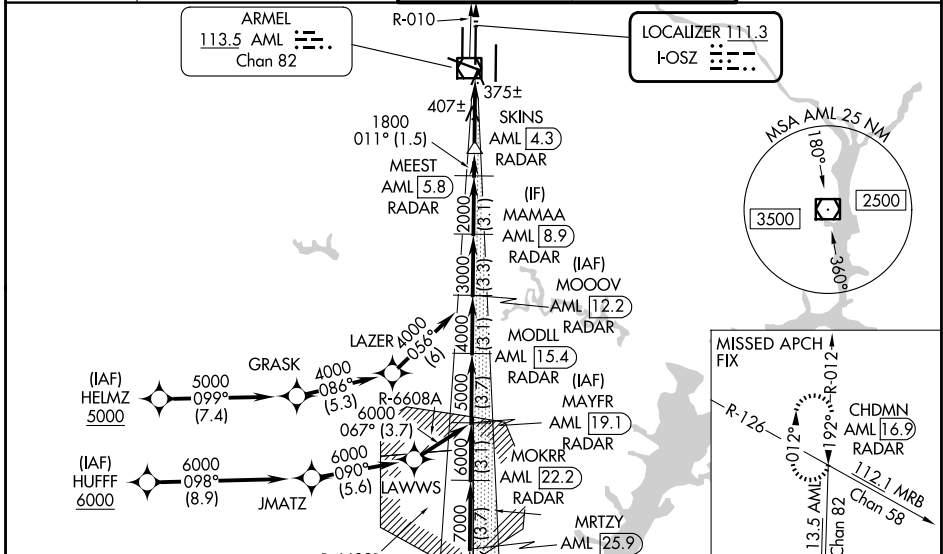
DME or RADAR required.
RADAR required for procedure entry at BRODY.

Simultaneous approach authorized. DME from AML VOR/DME.
DME use requires simultaneous reception of I-OSZ and AML DME.
Requires specific OPSPEC, MSPEC, or LOA approval.

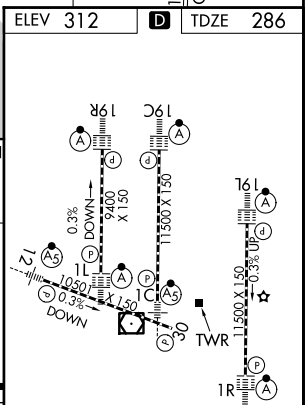
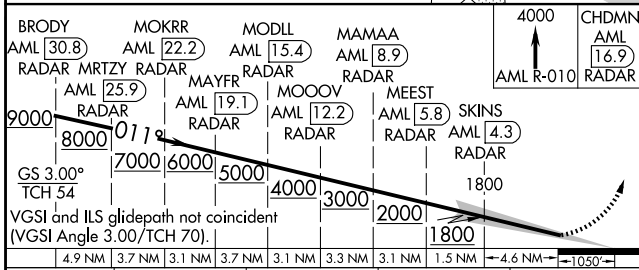
MALSR

MISSED APPROACH: Climb to 4000 on AML VOR/DME
R-010 to CHDMN/AML 16.9
DME/RADAR and hold,
continue climb-in-hold to 4000.

D-ATIS 134.85	POTOMAC APP CON 120.45 306.925 (241°-330°) 128.525 306.925 (091°-240°) 126.1 338.25 (331°-090°)	DULLES TOWER 120.1 317.8 (Rwy 1R/19L) 120.25 348.6 (Rwy 1C/19C) 134.425 348.6 (Rwys 1L/19R and 12/30)	GND CON 121.9 317.8 (EAST) 121.625 348.6 (WEST)
-------------------------	---	---	---



ELEV 312	TDZE 286
----------	----------



SA CATEGORY II ILS - SPECIAL AIRCREW & AIRCRAFT CERTIFICATION REQUIRED

TDZL/RCLS Rwys 1C, 1L, 1R, 12, 19C and 19R
REIL Rwy 30
HIRL all rwys

NE-3, 16 APR 2026 to 14 MAY 2026

NE-3, 16 APR 2026 to 14 MAY 2026