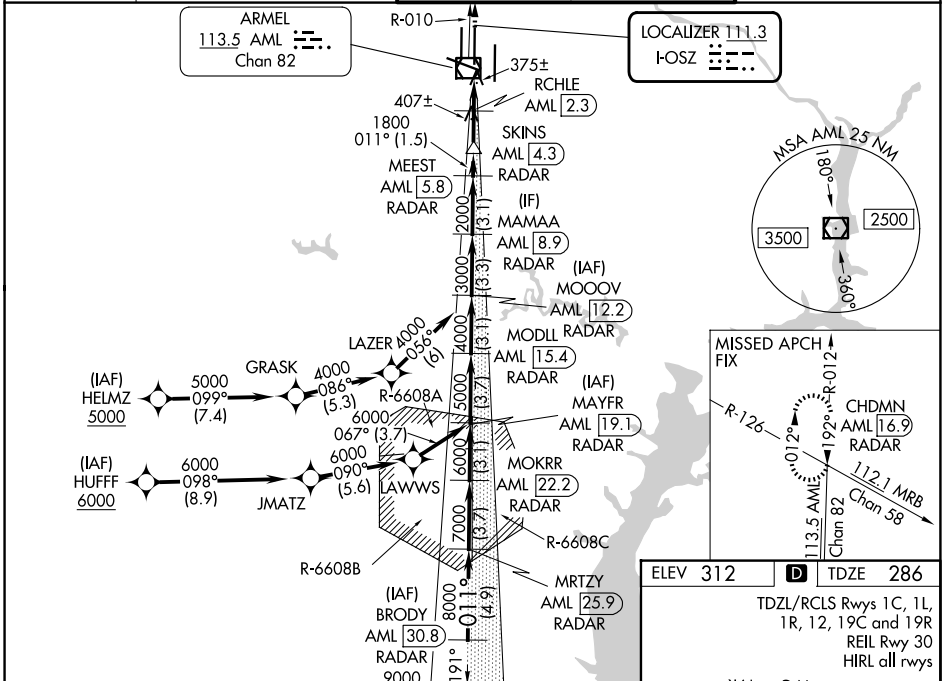


LOC I-OSZ <b>111.3</b>	APP CRS <b>011°</b>	Rwy Ldg <b>11500</b>
		TDZE <b>286</b>
		Apt Elev <b>312</b>

# ILS or LOC RWY 1C

WASHINGTON DULLES INTL (IAD)

RNP APCH-GPS. From HELMZ or HUFFF.		MALSR 	MISSED APPROACH: Climb to 4000 on AML VOR/DME R-010 to CHDMN/AML 16.9 DME/RADAR and hold, continue climb-in-hold to 4000.
DME or RADAR required. RADAR required for procedure entry at BRODY.			
<p>Simultaneous approach authorized. DME from AML VOR/DME. DME use requires simultaneous reception of I-OSZ and AML DME. For inop ALS, increase S-LOC Cats C/D visibility to RVR 5500.</p>			
D-ATIS <b>134.85</b>	POTOMAC APP CON <b>120.45 306.925</b> (241°-330°) <b>128.525 306.925</b> (091°-240°) <b>126.1 338.25</b> (331°-090°)	DULLES TOWER <b>120.1 317.8</b> (Rwy 1R/19L) <b>120.25 348.6</b> (Rwy 1C/19C) <b>134.425 348.6</b> (Rwys 1L/19R and 12/30)	GND CON <b>121.9 317.8</b> (EAST) <b>121.625 348.6</b> (WEST)



BRODY AML [30.8] RADAR MRITZY RADAR	MOKRR AML [22.2] RADAR	MODLL AML [15.4] RADAR	MAMAA AML [8.9] RADAR	4000 AML R-010	CHDMN AML [16.9] RADAR
9000 8000 7000 6000 5000 4000 3000 2000 1800 1140	011°	011°	011°	011°	011°
VGSI and ILS glidepath not coincident (VGSI Angle 3.00/TCH 70).					
4.9 NM		3.7 NM		3.1 NM	
3.7 NM		3.1 NM		3.7 NM	
3.1 NM		3.1 NM		3.3 NM	
3.1 NM		1.5 NM		2 NM	
2.6 NM					
CATEGORY	A		B		D
S-ILS 1C	486/18		200 (200-½)		
S-LOC 1C	640/24	354 (400-½)	640/30	354 (400-¾)	
CIRCLING	940-1	628 (700-1)	940-1¼	1180-2¾	868 (900-2¾)

NE-3, 16 APR 2026 to 14 MAY 2026

NE-3, 16 APR 2026 to 14 MAY 2026