

LOC/DME I-OIU 110.75 Chan 44 (Y)	APP CRS 011°	Rwy Ldg TDZE Apt Elev	9400 296 312
--	------------------------	-----------------------------	---

ILS or LOC RWY 1L

WASHINGTON DULLES INTL (IAD)

RNP APCH - GPS. From HELMZ.
DME or RADAR required. DME required for LOC only.
RADAR required for procedure entry at WABER.

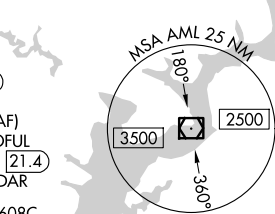
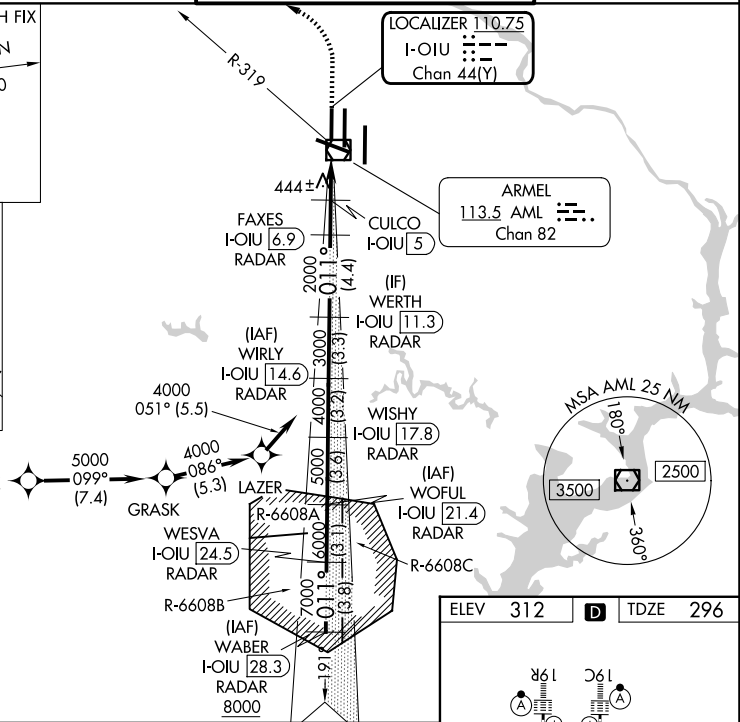
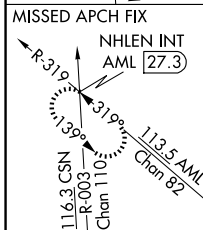
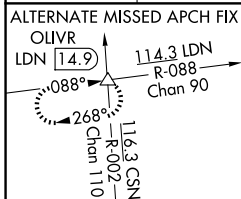
Simultaneous approach authorized.
For inop ALS, increase LOC Cats C/D visibility to RVR 5500.

ALS F-2



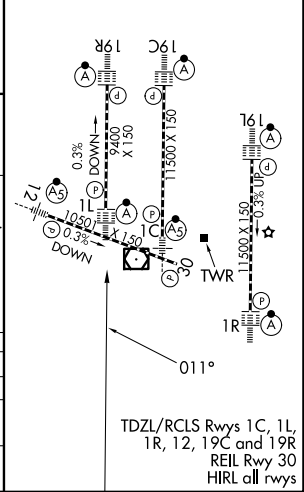
MISSED APPROACH: Climb to 800 then climbing left turn to 3000 on heading 276° and on AML VOR/DME R-319 to NHLEN INT/AML 27.3 DME and hold.

D-ATIS 134.85	POTOMAC APP CON 120.45 306.925 (241°-330°) 128.525 306.925 (091°-240°) 126.1 338.25 (331°-090°)	DULLES TOWER 120.1 317.8 (Rwy 1R/19L) 120.25 348.6 (Rwy 1C/19C) 134.425 348.6 (Rwys 1L/19R and 12/30)	GND CON 121.9 317.8 (EAST) 121.625 348.6 (WEST)
-------------------------	---	---	---



WABER I-OIU 28.3 RADAR	WOFUL I-OIU 21.4 RADAR	WIRLY I-OIU 14.6 RADAR	WESVA I-OIU 24.5 RADAR	WISHY I-OIU 17.8 RADAR	WERTH I-OIU 11.3 RADAR	FAXES I-OIU 6.9 RADAR	CULCO I-OIU 5 I-OIU 2.6 I-OIU 1.7	800	3000	AML R-319	NHLEN INT
VGS I and ILS glidepath not coincident (VGS I Angle 3.00/TCH 70).											
GS 3.00° TCH 55											
3.8 NM	3.1 NM	3.6 NM	3.2 NM	3.3 NM	4.4 NM	1.9 NM	2.4	0.9			

ELEV 312	TDZE 296
----------	----------



CATEGORY	A	B	C	D
S-ILS 1L	496/18		200 (200-1/2)	
S-LOC 1L	660/24 364 (400-1/2)		660/35 364 (400-5/8)	
CIRCLING	940-1 628 (700-1)		940-1 3/4 1180-2 3/4 628 (700-1 3/4) 868 (900-2 3/4)	

NE-3, 16 APR 2026 to 14 MAY 2026

NE-3, 16 APR 2026 to 14 MAY 2026