

LOC/DME I-HAD <b>110.1</b> Chan 38	APP CRS <b>011°</b>	Rwy Ldg <b>11500</b>
		TDZE <b>312</b>
		Apt Elev <b>312</b>

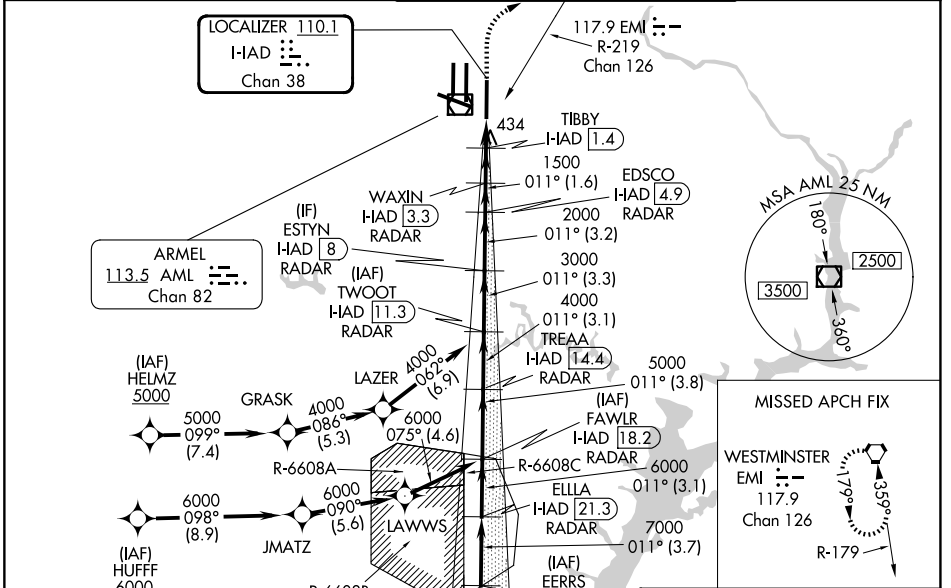
# ILS or LOC RWY 1R

WASHINGTON DULLES INTL (IAD)

RNP APCH-GPS. From HELMZ, or HUFFF.  
DME or RADAR required. DME required for LOC only.  
RADAR required for procedure entry at EERRS.  
Simultaneous approach authorized.

ALSF-2  
MISSED APPROACH: Climb to 800 then climbing right turn to 3000 on heading 060° and EMI VORTAC R-219 to EMI VORTAC and hold.

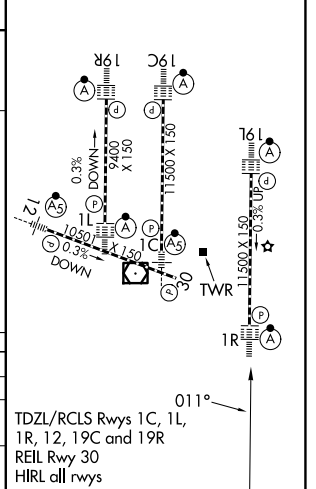
D-ATIS <b>134.85</b>	POTOMAC APP CON <b>120.45 306.925</b> (241°-330°) <b>128.525 306.925</b> (091°-240°) <b>126.1 338.25</b> (331°-090°)	DULLES TOWER <b>120.1 317.8</b> (Rwy 1R/19L) <b>120.25 348.6</b> (Rwy 1C/19C) <b>134.425 348.6</b> (Rwys 1L/19R and 12/30)	GND CON <b>121.9 317.8</b> (EAST) <b>121.625 348.6</b> (WEST)
-------------------------	---	---	---



ELEV 312	TDZE 312
----------	----------

VGSI and ILS glidepath not coincident (VGSI Angle 3.00/TCH 72).

EERRS I-HAD 25 RADAR	ELLA I-HAD 21.3 RADAR	FAWLR I-HAD 18.2 RADAR	TREA I-HAD 14.4 RADAR	TWOOT I-HAD 11.3 RADAR	ESTYN I-HAD 8 RADAR	EDSCO I-HAD 4.9 RADAR	WAXIN I-HAD 3.3 RADAR	TIBBY I-HAD 1.4 RADAR	I-HAD DME ANT.
7000	7000	6000	5000	4000	3000	2000	1500	900	0.8
3.7 NM	3.1 NM	3.8 NM	3.1 NM	3.3 NM	3.2 NM	1.6 NM	1.9 NM	0.7	0.8
GS 3.00° TCH 55									
CATEGORY	A	B		C		D			
S-ILS 1R	512/18 200 (200-½)								
S-LOC 1R	700/24	388 (400-½)		700/35		388 (400-¾)			
CIRCLING	940-1	628 (700-1)		940-1¾		628 (700-1¾)			
				1180-2¾		868 (900-2¾)			



NE-3, 16 APR 2026 to 14 MAY 2026

NE-3, 16 APR 2026 to 14 MAY 2026