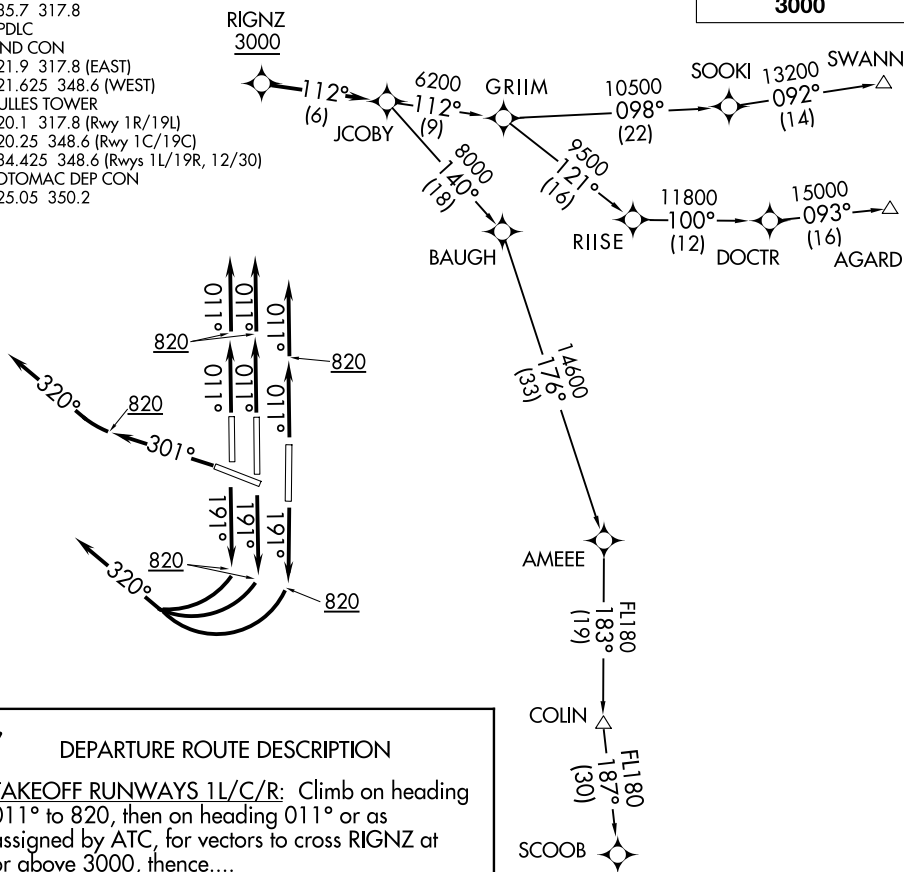


JCOBY FOUR DEPARTURE (RNAV)

**TOP ALTITUDE:
3000**

D-ATIS 134.85
 CLNC DEL
 135.7 317.8
 CPDLC
 GND CON
 121.9 317.8 (EAST)
 121.625 348.6 (WEST)
 DULLES TOWER
 120.1 317.8 (Rwy 1R/19L)
 120.25 348.6 (Rwys 1C/19C)
 134.425 348.6 (Rwys 1L/19R, 12/30)
 POTOMAC DEP CON
 125.05 350.2



DEPARTURE ROUTE DESCRIPTION

TAKEOFF RUNWAYS 1L/C/R: Climb on heading 011° to 820, then on heading 011° or as assigned by ATC, for vectors to cross RIGNZ at or above 3000, thence....

TAKEOFF RUNWAYS 19L/C/R: Climb on heading 191° to 820, then turn right heading 320° or as assigned by ATC, for vectors to cross RIGNZ at or above 3000, thence....

TAKEOFF RUNWAY 30: Climb on heading 301° to 820, then turn right heading 320° or as assigned by ATC, for vectors to cross RIGNZ at or above 3000, thence....

...on track 112° to JCOBY. Then on assigned transition. Maintain 3000. Expect clearance to filed altitude within ten (10) minutes after departure.

AGARD TRANSITION (JCOBY4.AGARD):

COLIN TRANSITION (JCOBY4.COLIN):

SCOOB TRANSITION (JCOBY4.SCOOB):

SWANN TRANSITION (JCOBY4.SWANN):

TAKEOFF MINIMUMS

Rwys 1L/C/R, 19L/C/R, 30:

Standard with minimum climb of 500' per NM to 820.

NOTE: RNAV 1.

NOTE: DME/DME/IRU or GPS required.

NOTE: RADAR required.

NOTE: Turbojets only.

NOTE: COLIN/SCOOB Transitions - Part 121 aircraft only.

NOTE: SWANN/AGARD Transitions - Part 121 and Part 129 aircraft only.

NOTE: Chart not to scale.

NE-3, 16 APR 2026 to 14 MAY 2026

NE-3, 16 APR 2026 to 14 MAY 2026

JCOBY FOUR DEPARTURE (RNAV)

(JCOBY4.JCOBY) 31DEC20