

APP CRS	Rwy Ldg	9400
011°	TDZE	296
	Apt Elev	312

RNAV (RNP) Z RWY 1L

WASHINGTON DULLES INTL (IAD)

RNP AR APCH - GPS.

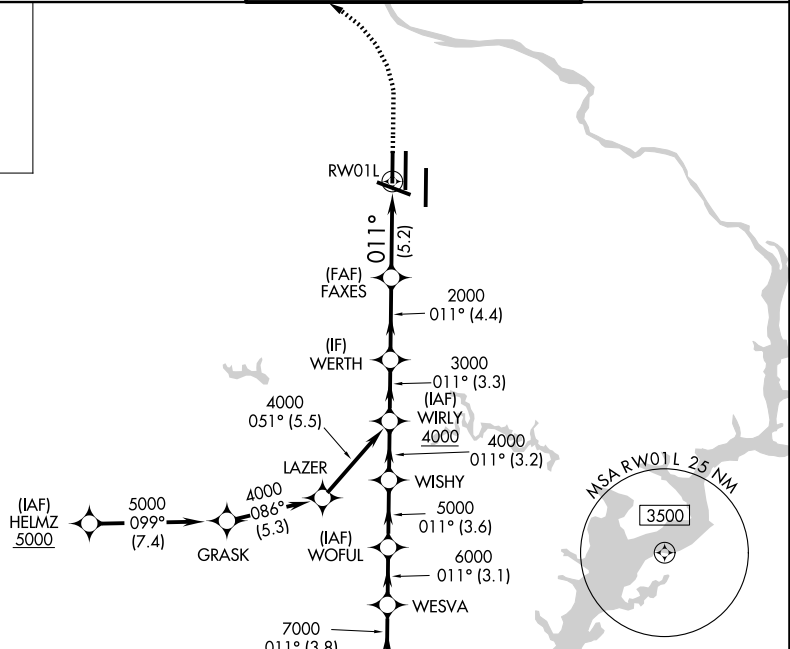
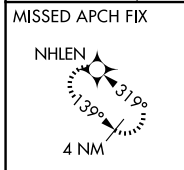
ALSIF-2



▼ For uncompensated Baro-VNAV systems, procedure NA below -13°C or above 54°C. Simultaneous approach authorized. For inop ALS, increase RNP 0.11 all Cats visibility to RVR 4500 and RNP 0.30 all Cats visibility to RVR 6000.

MISSED APPROACH: Climb to 800 then climbing left turn to 3000 direct NHLEN and hold.

D-ATIS	POTOMAC APP CON	DULLES TOWER	GND CON
134.85	120.45 306.925 (241°-330°)	120.1 317.8 (Rwy 1R/19L)	121.9 317.8 (EAST)
	128.525 306.925 (091°-240°)	120.25 348.6 (Rwy 1C/19C)	121.625 348.6 (WEST)
	126.1 338.25 (331°-090°)	134.425 348.6 (Rwys 1L/19R and 12/30)	



NE-3, 16 APR 2026 to 14 MAY 2026

NE-3, 16 APR 2026 to 14 MAY 2026

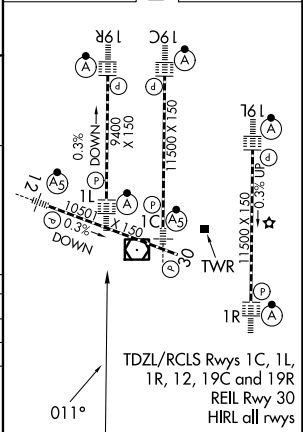
ELEV 312	D	TDZE 296
----------	----------	----------

VGSI and RNAV glidepath not coincident (VGSI Angle 3.00/TCH 70).

WABER	WESVA	WOFUL	WISHY	WIRLY	WERTH	FAXES	RW01L
8000	7000	6000	5000	4000	3000	2000	2000
GP 3.00°							
TCH 55							
	3.8 NM	3.1 NM	3.6 NM	3.2 NM	3.3 NM	4.4 NM	5.2 NM

CATEGORY	A	B	C	D
RNP 0.11 DA		572/24	276 (300-½)	
RNP 0.30 DA		710/40	414 (400-¾)	

AUTHORIZATION REQUIRED



TDZL/RCLS Rwys 1C, 1L, 1R, 12, 19C and 19R
REIL Rwy 30
HIRL all rwys