

WAAS CH 40305 W19B	APP CRS 191°	Rwy Ldg 11089 TDZE 272 Apt Elev 312
--	------------------------	--

RNAV (GPS) Y RWY 19C

WASHINGTON DULLES INTL (IAD)

RNP APCH - GPS.

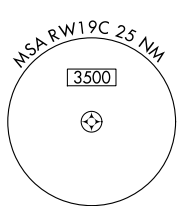
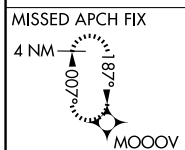
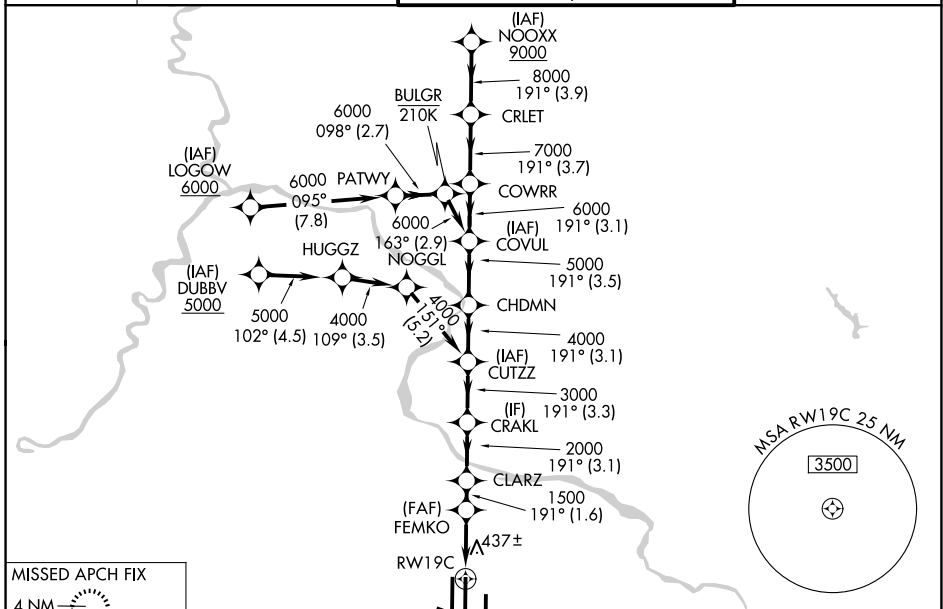
▼ Simultaneous approach authorized. LNAV procedure NA during simultaneous operations.
▲ Use of FD or AP required during simultaneous operations. For uncompensated Baro-VNAV systems, LNAV/VNAV NA below -13°C or above 54°C.

ALSF-2

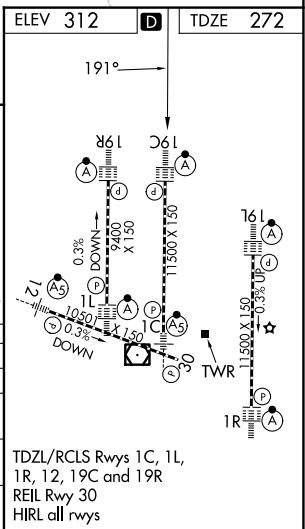


MISSED APPROACH:
Climb to 3000 direct
MOOOV and hold.

D-ATIS 134.85	POTOMAC APP CON 120.45 306.925 (241°-330°) 128.525 306.925 (091°-240°) 126.1 338.25 (331°-090°)	DULLES TOWER 120.1 317.8 (Rwys 1R/19L) 120.25 348.6 (Rwy 1C/19C) 134.425 348.6 (Rwys 1L/19R and 12/30)	GND CON 121.9 317.8 (EAST) 121.625 348.6 (WEST)
-------------------------	---	--	---



3000	MOOOV	VGSI and RNAV glidepath not coincident (VGSI Angle 3.00/TCH 72).				NOOXX
		FEMKO	CUTZZ	CHDMN	COWRR	CRLET
		1500	2000	3000	4000	7000
		1.1 NM	2.6 NM	1.6 NM	3.1 NM	3.3 NM
		1.1	2.6	1.6	3.1	3.3
CATEGORY		A	B	C	D	
LPV DA			472/18	200 (200-1/2)		
LNAV/VNAV DA			700/40	428 (400-3/4)		
LNAV MDA		700/24	428 (400-1/2)	700/40	428 (400-3/4)	
CIRCLING		940-1	628 (700-1)	940-1 3/4	628 (700-1 3/4)	1180-2 3/4
						868 (900-2 3/4)



NE-3, 16 APR 2026 to 14 MAY 2026

NE-3, 16 APR 2026 to 14 MAY 2026