

WAAS CH <b>86709</b> <b>W19D</b>	APP CRS <b>191°</b>	Rwy Ldg <b>9400</b> TDZE <b>278</b> Apt Elev <b>312</b>
--	------------------------	---

# RNAV (GPS) Y RWY 19R

WASHINGTON DULLES INTL (IAD)

RNP APCH - GPS.

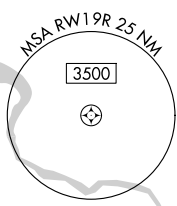
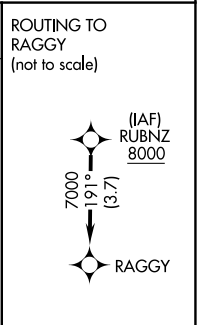
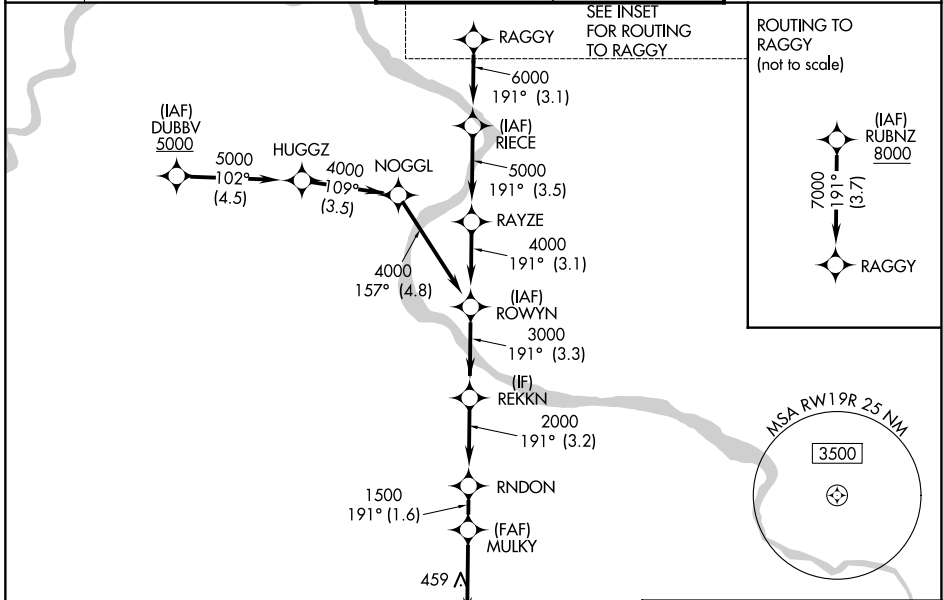
For uncompensated Baro-VNAV systems, LNAV/VNAV NA below -13°C or above 54°C. Simultaneous approach authorized. LNAV procedure NA during simultaneous operations. Use of FD or AP required during simultaneous operations.

ALSF-2

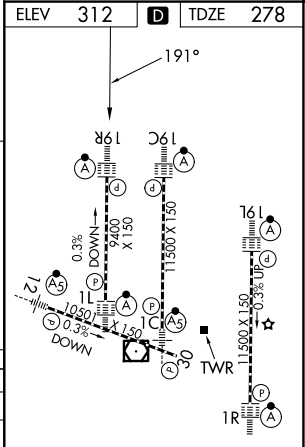


MISSED APPROACH: Climb to 800 then climbing right turn to 3000 direct AMOSS and hold.

D-ATIS <b>134.85</b>	POTOMAC APP CON <b>120.45 306.925</b> (241°-330°) <b>128.525 306.925</b> (091°-240°) <b>126.1 338.25</b> (331°-090°)	DULLES TOWER <b>120.1 317.8</b> (Rwy 1R/19L) <b>120.25 348.6</b> (Rwy 1C/19C) <b>134.425 348.6</b> (Rwy 1L/19R and 12/30)	GND CON <b>121.9 317.8</b> (EAST) <b>121.625 348.6</b> (WEST)
-------------------------	---	--	---



800	3000	AMOSS	VGSIs and RNAV glidepath not coincident (VGSi Angle 3.00/TCH 70).				RUBNZ 8000
MULKY	MULKY	RNDON	REKKN	ROWYN	RAYZE	RIECE	RAGGY
1.2 NM to RWY19R	1500	2000	3000	4000	5000	6000	7000
1.2	2.5	1.6 NM	3.2 NM	3.3 NM	3.1 NM	3.5 NM	3.1 NM
GP 3.00°	TCH 55						



CATEGORY	A	B	C	D
LPV DA		478/18	200 (200-1/2)	
LNAV/VNAV DA		708/40	430 (400-3/4)	
LNAV MDA	720/24	442 (500-1/2)	720/45	442 (500-3/8)
CIRCLING	940-1	628 (700-1)	940-1 3/4 628 (700-1 3/4)	1180-2 3/4 868 (900-2 3/4)

TDZL/RCLS Rwy 1C, 1L, 1R, 12, 19C and 19R  
REIL Rwy 30  
HIRL all rwy

NE-3, 16 APR 2026 to 14 MAY 2026

NE-3, 16 APR 2026 to 14 MAY 2026